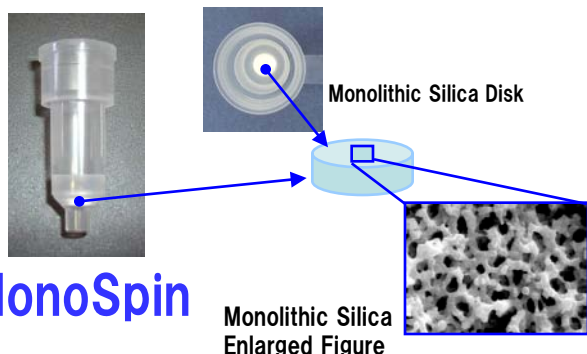


MonoSpin® Series

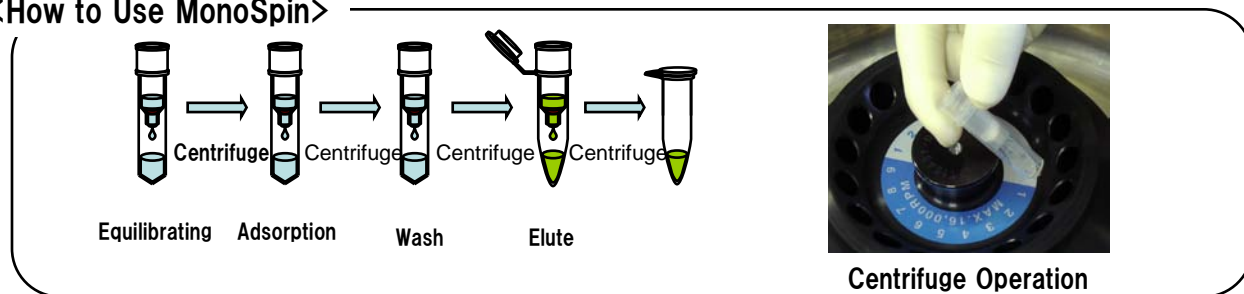
MonoSpin is a monolithic SPE column excellent for the small volume sample with an easy and quick operation by centrifuge.

Features:

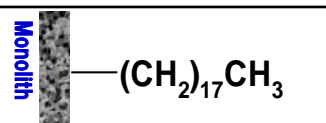
- ◆ An easy operation by centrifuge
- ◆ Speedy sample treatment with a superb through pore
- ◆ Excellent for the sample for 50–800 μL
- ◆ Selective purification/enrichment by various functional groups



<How to Use MonoSpin>

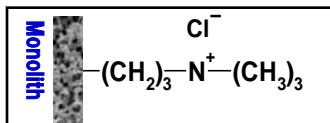


MonoSpin® C18



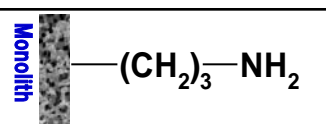
Octadecyl and non polar functional group. Best for the drug extraction in the biotic sample, and desalting and enrichment of peptide samples.

MonoSpin® SAX



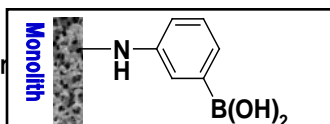
Column bonded with Trimethyl aminopropyl combining both strong anion and weak non polarity. Best for the extraction of acidic drug

MonoSpin® NH₂



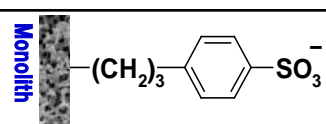
Column bonded with aminopropyl. Optimal for the enrichment of sugar chain and/or hydrophobic compounds by HILIC mode.

MonoSpin® PBA



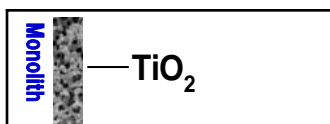
Highly specific column combined with phenyl boric acid. Excellent for the selective extraction of cis diol compounds, such as catechol amine

MonoSpin® SCX



Column bonded with propyl benzene sulfone acid combining both strong cation and non polarity. Optimal for the extraction of base drug

MonoSpin® TiO



Monolith skeleton coated with dioxide titanium. Excellent for the enrichment of phosphopeptides

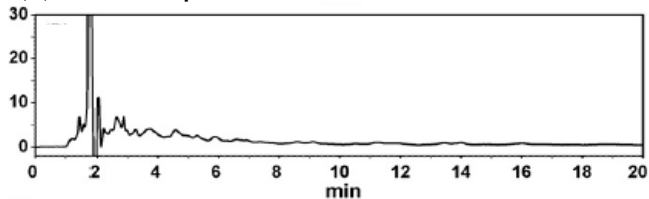
Product Information

Description	Qty	Cat. No.
MonoSpin C18	50	5010-21700
	100	5010-21701
MonoSpin NH ₂	50	5010-21710
	100	5010-21711
MonoSpin SCX	50	5010-21725
	100	5010-21726
MonoSpin SAX	50	5010-21720
	100	5010-21721
MonoSpin PBA	50	5010-21715
	100	5010-21716
MonoSpin TiO	50	5010-21705
	100	5010-21706

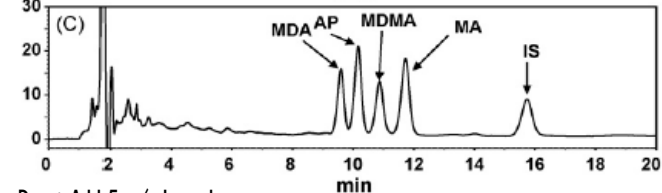
【Application】

Drug in Urine (MonoSpin® C18)

(A) Urine Sample



(B) Purify with MonoSpin C18 after adding drug to urine



Drug: Add 5ug/mL each

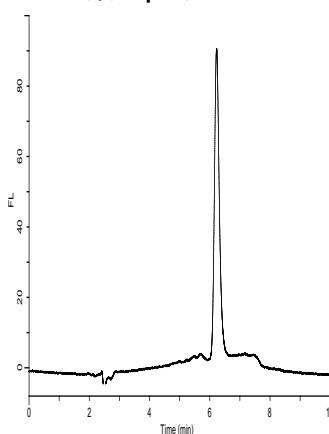
MA (Methamphetamine), MDMA (3,4-Methylenedioxyamphetamine)
AP (Amphetamine), MDA (3,4-methylenedioxyamphetamine)

Each drug was enriched by the hydrophobic interaction of C18

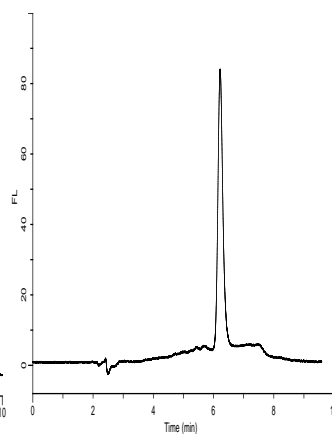
<J. Chromatogr A 1208 (2008) 71-75>

Pyridyl Aminated Sugar Chain (MonoSpin® NH2)

(A) PA001 (TaKaRa BIO) 0.01 pmol



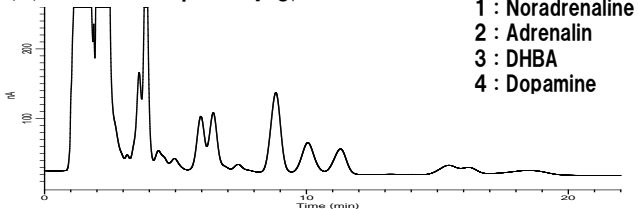
(B) Purify PA001



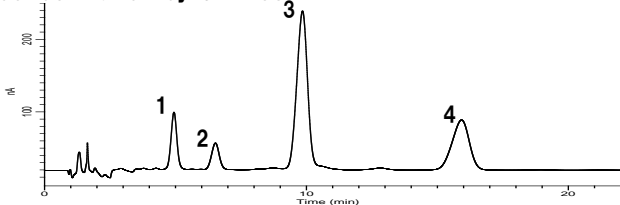
Purify pyridyl aminated sugar chain by NH2 HILIC mode
No sample decrease is observed by retention nor purification.

Catechol Amines in Urine (MonoSpin® PBA)

(A) Urine Sample + 1 μg/mL DHBA



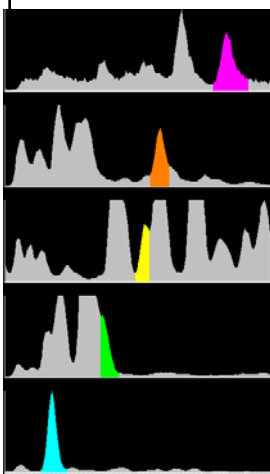
(B) Purify urine with MonoSpin PBA and enrich the concentration by 5 times



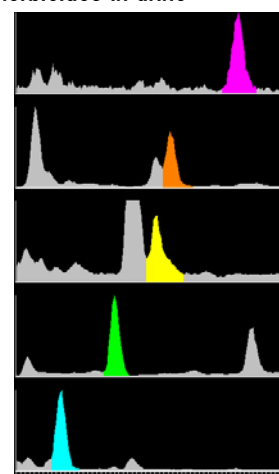
Catechol amines were enriched by PBA

Phospho Amine Herbicides in Urine (MonoSpin® TiO)

(A) Herbicides in Urine (1ppm each)



(B) Purification of herbicides in urine



Phospho amine herbicides were selectively enriched and removed in urine by TiO.



GL Sciences Inc.

22-1 Nishishinjuku 6-chome, Shinjuku-ku, Tokyo 163-1130, Japan

TEL: +81-3-5323-6620

Fax: +81-3-5323-6621

www.glsiences.com