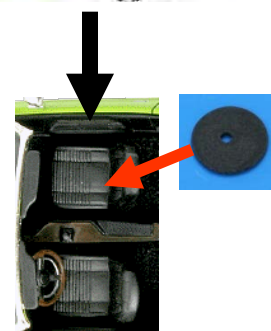
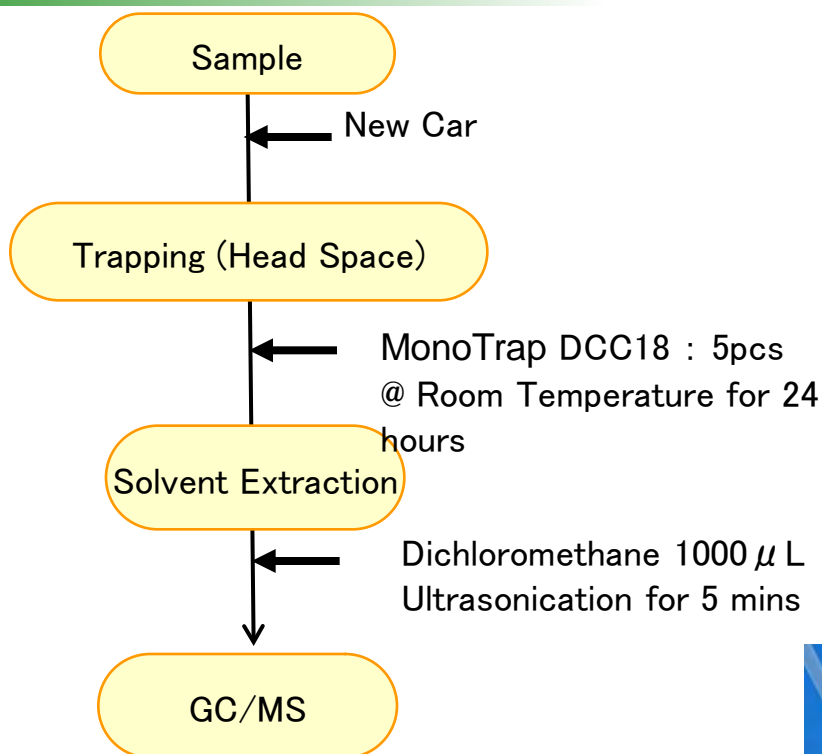


## Protocol

**GC Condition**

**System** : SHIMADZU GC-2010、GCMS-QP2010 Plus

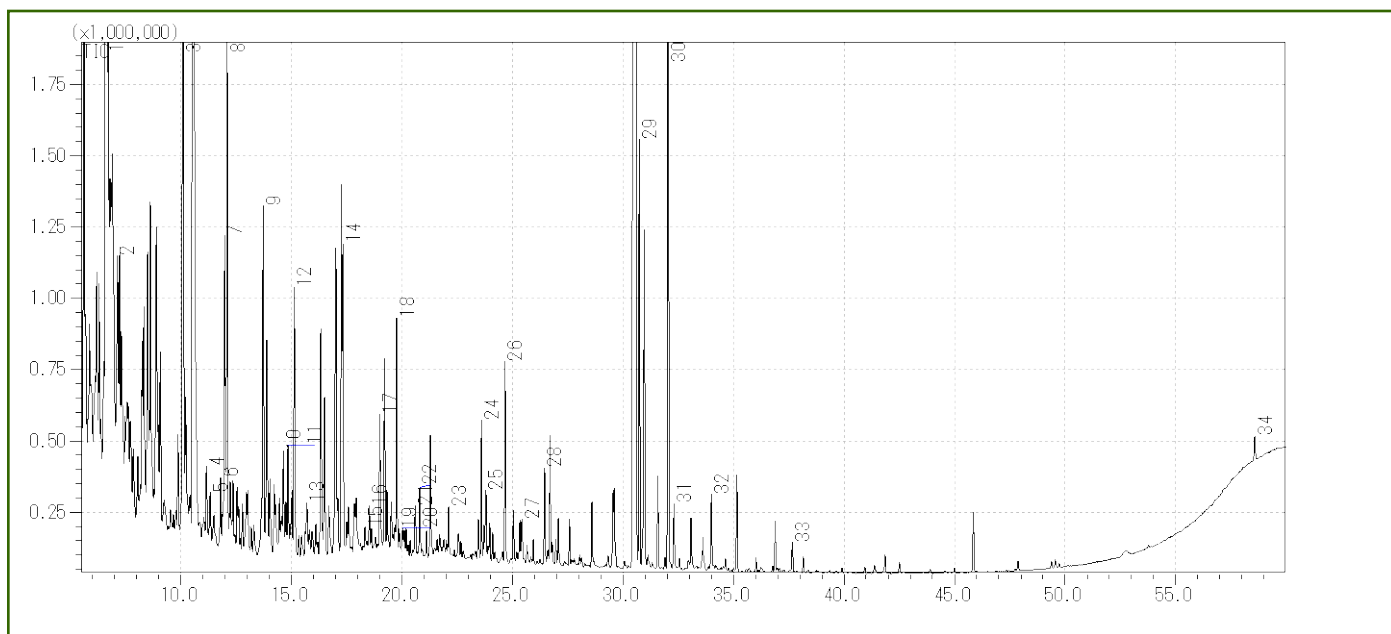
**Column** : InertCap Pure-WAX Cat.1010-68142  
0.25mmI.D. × 30m df=0.25 µ m

**Column Temp** : 40°C(5min)→4°C/min→250°C

**Carrier Gas** : He 120kPa

**Injection** : Split less, 1 µ L  
250°C

**Detection** : MS Scan (m/z 20-350)



1 Undecane	18 Ethylhexanol
2 o-xylene	19 Decanal
3 Dodecane	20 Benzaldehyde
4 Styrene	21 Pentadecane
5 m-EthylMethylToluene	22 Nonadecane
6 Pentadecane	23 $\alpha$ -Isophoron
7 1, 3, 5-TrimethylBenzene	24 tetramethylbutanedinitrile
8 Hexadecane	25 Hexadecane
9 Tridecane	26 TEP
10 4-ethyl-o-xylene	27 Eicosane
11 o-Cymene	28 Naphthalene
12 3-ethyl-o-xylene	29 3-Hydroxy-2, 2, 4-trimethylpentyl ester of isobutanoic acid
13 p-Cymene	30 BHT
14 Durene	31 Benzothiazole
15 Furfural	32 Phenol
16 p-Ethylstyrene	33 Caprolactam
17 Durene	34 Di-n-octyl phthalate