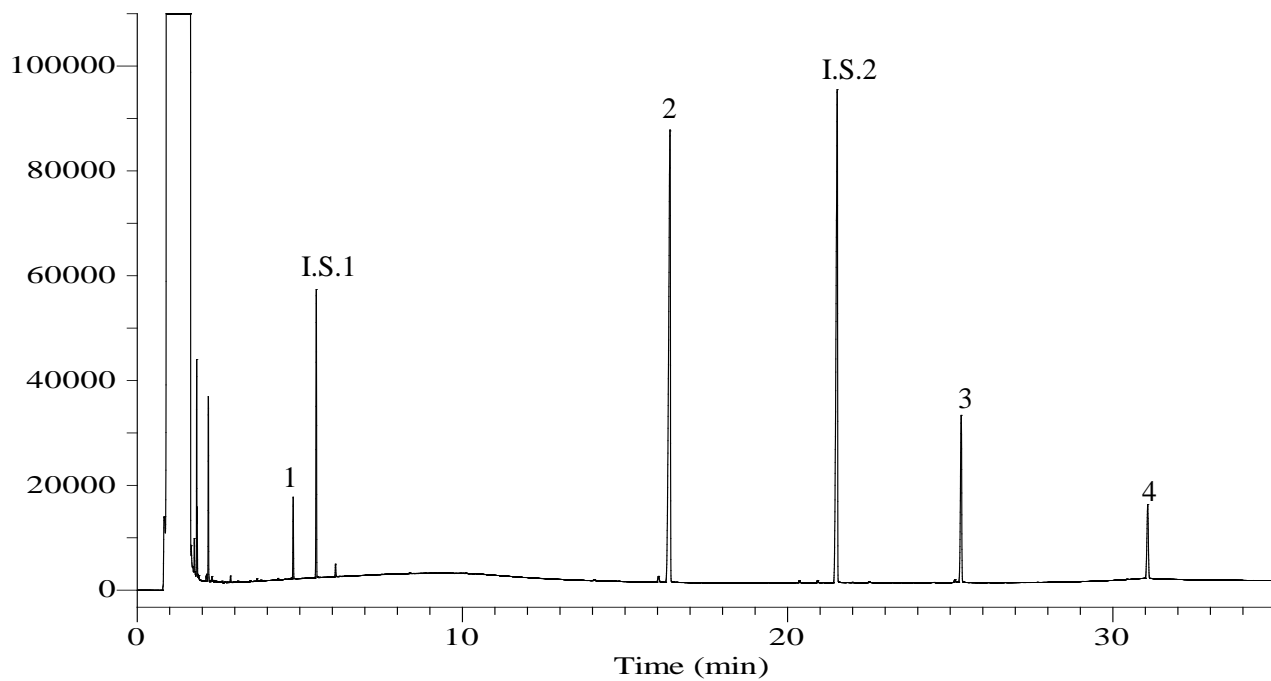


Glycerol and Mono-, Di-, Triglyceride by EN14105



Conditions

System	: GC/FID OPTIC3	
Column	: InertCap 5 (Tailor-made column of high temperature) 0.32 mm I.D. x 15 m df = 0.1 µm Deactivated fused silica capillary tube 0.53 mm I.D. x 2 m	
Col. Temp.	: 50 °C (1 min hold) - 15 °C/min - 180 °C - 7 °C/min - 230 °C - 10 °C/min - 370 °C (5 min hold)	
Carrier Gas	: He 3.0 mL/min	
Injection	: On-column 50 °C (30 sec hold) - 10 °C/sec - 300 °C (120 sec) - 50 °C	
Detection	: FID Range 10 ⁰ 380 °C	
Sample Size	: Analyte in Heptane 1.0 µL	
Analyte	: 1. Glycerol	2.4 µg/mL
	: 2. 1-Monooleoylglycerol (monoolein)	70 µg/mL
	: 3. 1,3-dioleoylglycerol (diolein)	24 µg/mL
	: 4. 1,2,3-Trioleoylglycerol (triolein)	18 µg/mL
	: I.S.1. 1,2,4-Butanetriol	750 µg/mL
	: I.S.2. 1,2,3-Tricaproylglycerol (tricaprin)	1200 µg/mL
	: (Deriv. by MSTFA)	