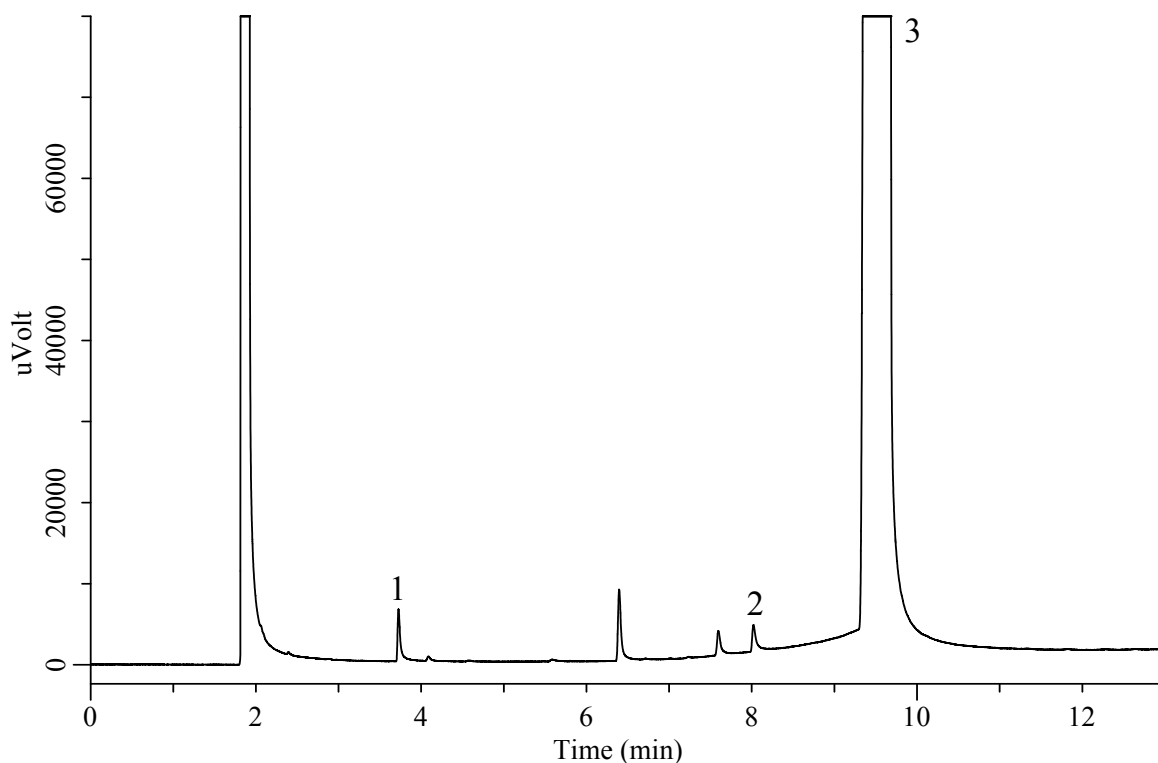


# InertSearch™ for GC

InertCap® Applications

## Glycerin, Concentrated glycerin (Under the Condition of Japanese Pharmacopoeia 16)

Data No. GA 262-0904



### Conditions

**System** : GC-FID  
**Column** : InertCap 1701  
0.32 mm I.D. x 30 m df = 1.0 μm  
**Col. Cat. No.** : 1010-61245  
**Col. Temp.** : 100 °C — 7.5 °C/min — 220 °C  
**Carrier Gas** : He 80 kPa  
**Injection** : Split 1:20  
220 °C  
**Detection** : FID Range 10<sup>0</sup>  
250 °C  
**Sample Size** : 1 μL  
**Sample** : Standard  
Analyte in Methanol

### Analyte

1. Ethylene glycol	50 mg/L
2. Diethylene glycol	50 mg/L
3. Glycerin	50000 mg/L

RSD of the  
peak area (1)(%)(n=6) : 1.9 (≦ 10)  
RSD of the  
peak area (2)(%)(n=6) : 2.8 (≦ 10)