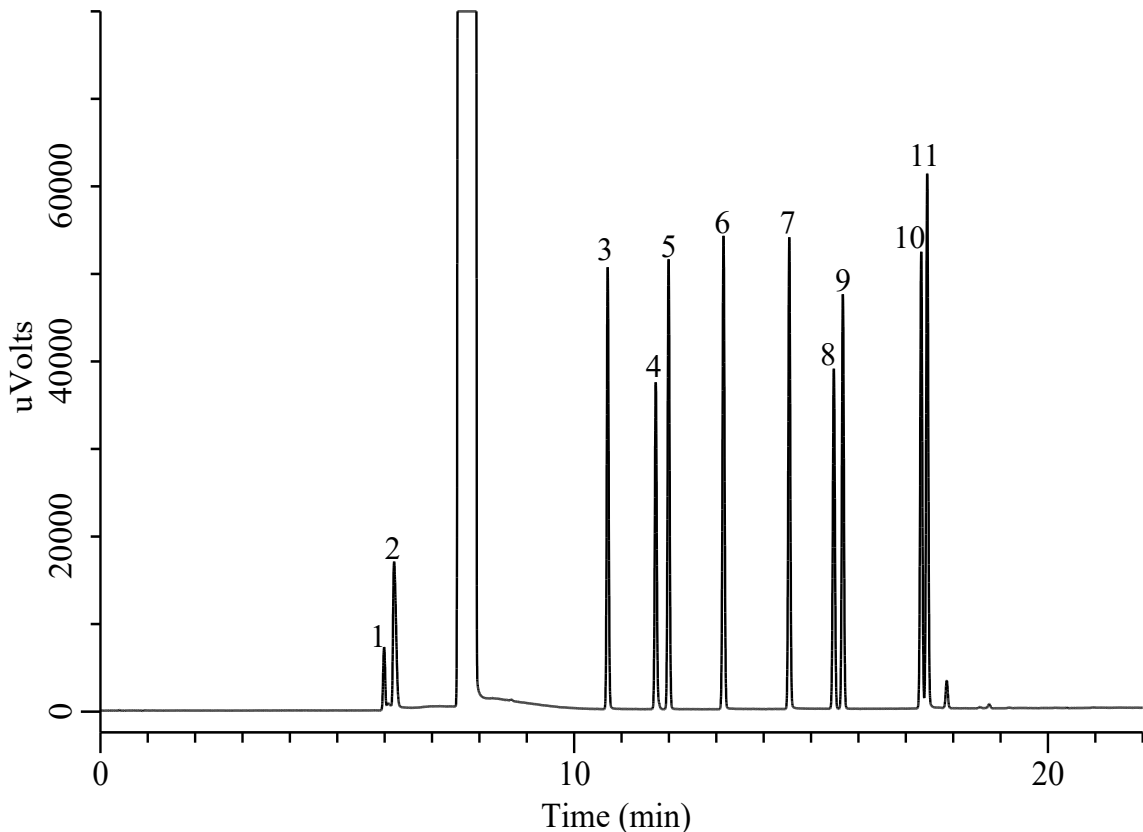


## Analysis of Ethanol as a blending component for petrol

(Under the Condition of EN15721-2013, Ethanol as a blending component for petrol)



**Conditions**

**System** : GC-4000 Plus/FID  
**Column** : InertCap 624 Select (GL Sciences Inc.)  
 0.25 mm I.D. x 60 m df = 1.4 μm  
**Col. Cat. No.** : 1010-14686  
**Col. Temp.** : 40 °C (1 min) - 5 °C/min - 250 °C (2 min)  
**Carrier Gas** : He 1.4 mL/min , Constant Flow  
**Injection** : Split 70 mL/min  
 200 °C  
**Detection** : FID Auto Range  
 260 °C  
**Injection Vol.** : 1 μL  
**Sample** : Standard

**Analyte**

1. Acetaldehyde	0.09 % (v/v)
2. Methanol	0.09 % (v/v)
3. 1-Propanol	0.09 % (v/v)
4. Ethyl acetate	0.09 % (v/v)
5. 2-Butanol	0.09 % (v/v)
6. <i>iso</i> -Butanol	0.09 % (v/v)
7. 1-Butanol	0.09 % (v/v)
8. 3-Pentanol (I.S.)	0.07 % (v/v)
9. Acetal	0.09 % (v/v)
10. 3-Methylbutanol	0.09 % (v/v)
11. 2-Methylbutanol	0.09 % (v/v)
Sol. in Ethanol	
Resolution(10,11)	: 1.53 (≥1.0)