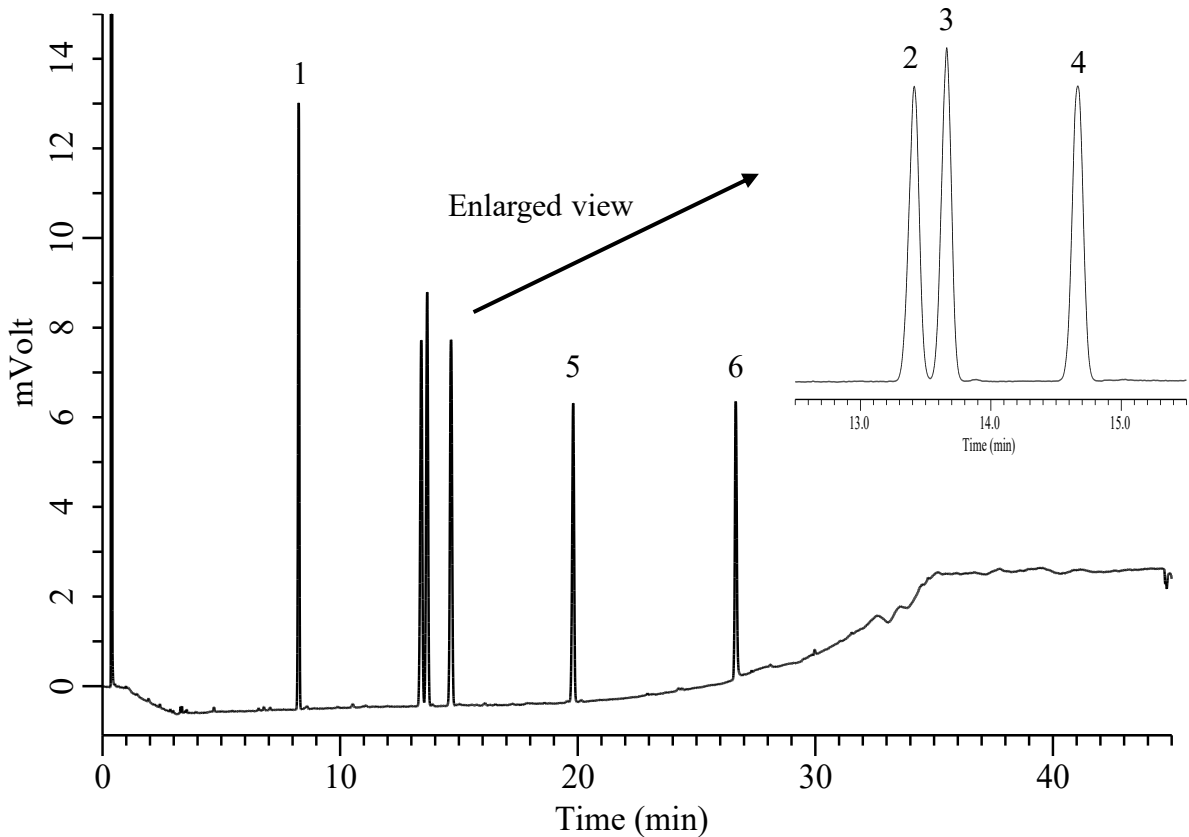


Analysis of Fatty acid methyl ester



Conditions

System : GC-4000 Plus H system
Column : InertCap 225 (GL Sciences Inc.)
 0.25 mm I.D. x 15 m df= 0.25 μ m
Column Cat. No. : 1010-66622
Column Temp. : 80 °C (1 min) - 30 °C/min - 140 °C
 - 3 °C/min - 150 °C - 1 °C/min
 - 155 °C - 2 °C/min - 165 °C
 - 3 °C/min - 220 °C (10 min)
Carrier Gas : H₂ 70 kPa, Constant Press
Injection : Split 120 mL/min
 220 °C
Detection : FID Auto Range
 220 °C
Injection Vol. : 0.5 μ L
Sample : Standard solution

Analyte :
 1. Methyl palmitate 0.2 mg/mL
 2. Methyl stearate 0.2 mg/mL
 3. Methyl oleate 0.2 mg/mL
 4. Methyl linoleate 0.2 mg/mL
 5. Methyl *cis*-11-eicosenoate 0.2 mg/mL
 6. Methyl ricinoleate 0.2 mg/mL

Resolution (2,3) : 1.65 (\geq 1.5)

RSD of the peak ratio of 4 to 6 (%) (n=5) : 0.78 (\leq 2.0)