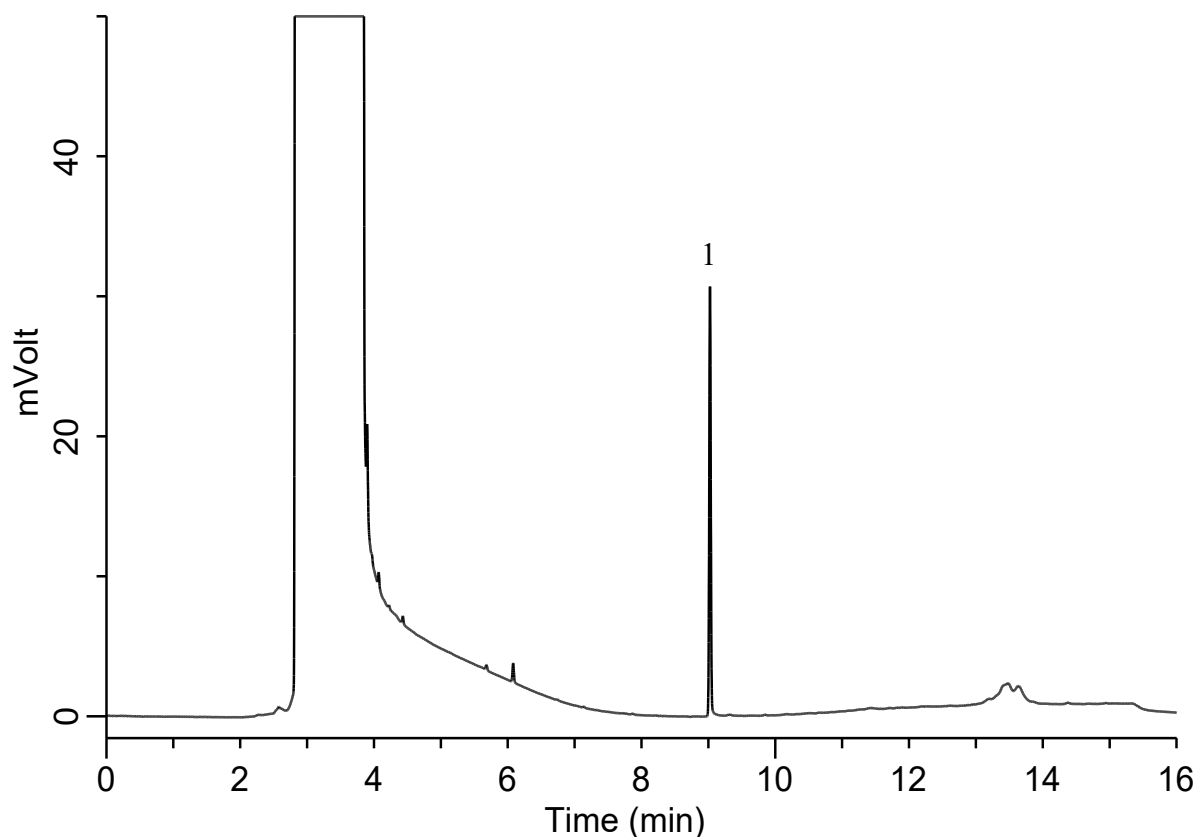


Analysis of Propylene glycol

(Under the Condition of the Methods for Analyzing Food Additives in Food)



Conditions

System : GC-4000 Plus system
Column : InertCap Pure-WAX (GL Sciences Inc.)
 0.25 mm I.D. x 30 m df= 0.25 μ m
Column Cat. No. : 1010-68142
Column Temp. : 60 °C (2 min) - 15 °C/min – 200 °C (4 min)
Carrier Gas : He 1 mL/min , Constant Flow
Injection : Splitless 0.5 min
 220 °C
Detection : FID Auto Range
 250 °C
Injection Vol. : 1 μ L
Sample : Standard

Analyte :
 1. Propylene glycol 10 μ g/mL
 Sol. in Methanol