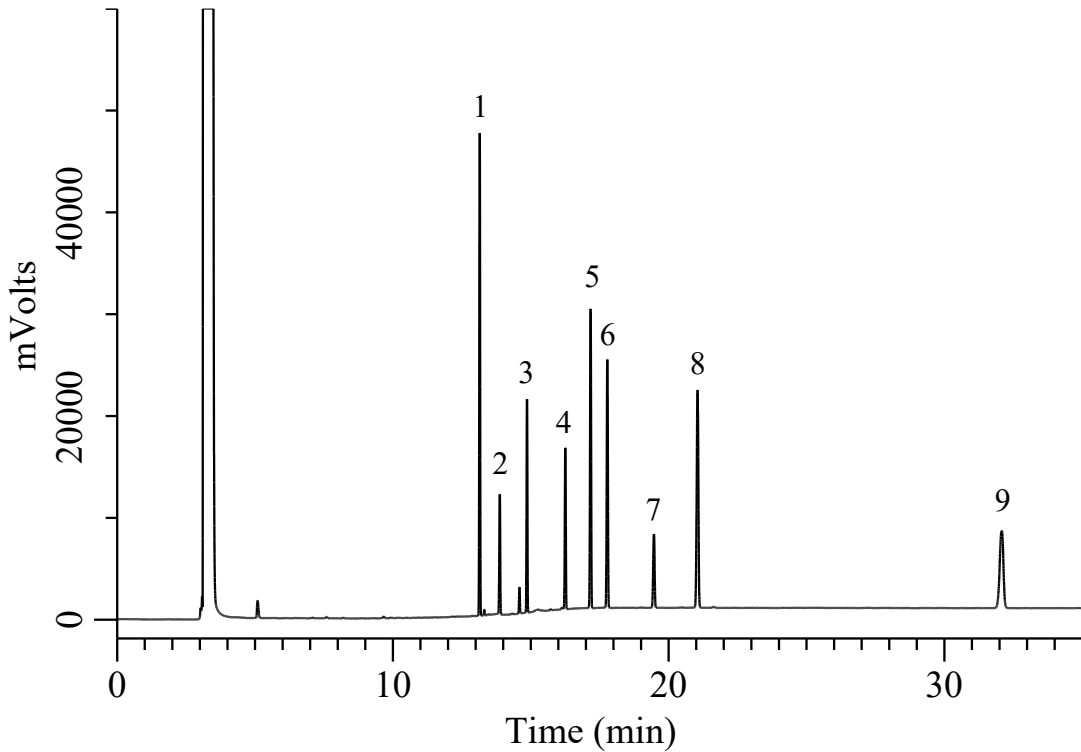


Analysis of Organophosphorus pesticide



Conditions

System : GC-4000 Plus system
Column : InertCap 210 (GL Sciences Inc.)
 : 0.25 mm I.D. x 30 m df = 0.25 μ m
Column Cat. No. : 1010-66142
Column Temp. : 100 $^{\circ}$ C (1 min) - 10 $^{\circ}$ C/min - 240 $^{\circ}$ C (30 min)
Carrier Gas : N₂ 0.6 mL/min, Constant flow
Injection : Split 6.0 mL/min
 : 250 $^{\circ}$ C
Detection : FID Auto Range
 : 250 $^{\circ}$ C
Injection Vol. : 1.0 μ L
Sample : Standard

Analyte :

1. Diazinon	100 ppm (v/v)
2. Acephate	100 ppm (w/v)
3. Chlorpyrifos-methyl	100 ppm (w/v)
4. Dimethoate	100 ppm (w/v)
5. Malathion	100 ppm (v/v)
6. Parathion-methyl	100 ppm (w/v)
7. Methidathion	100 ppm (w/v)
8. Isoxathion	100 ppm (v/v)
9. MPP Sulfone	100 ppm (w/v)

Analyte in Acetone