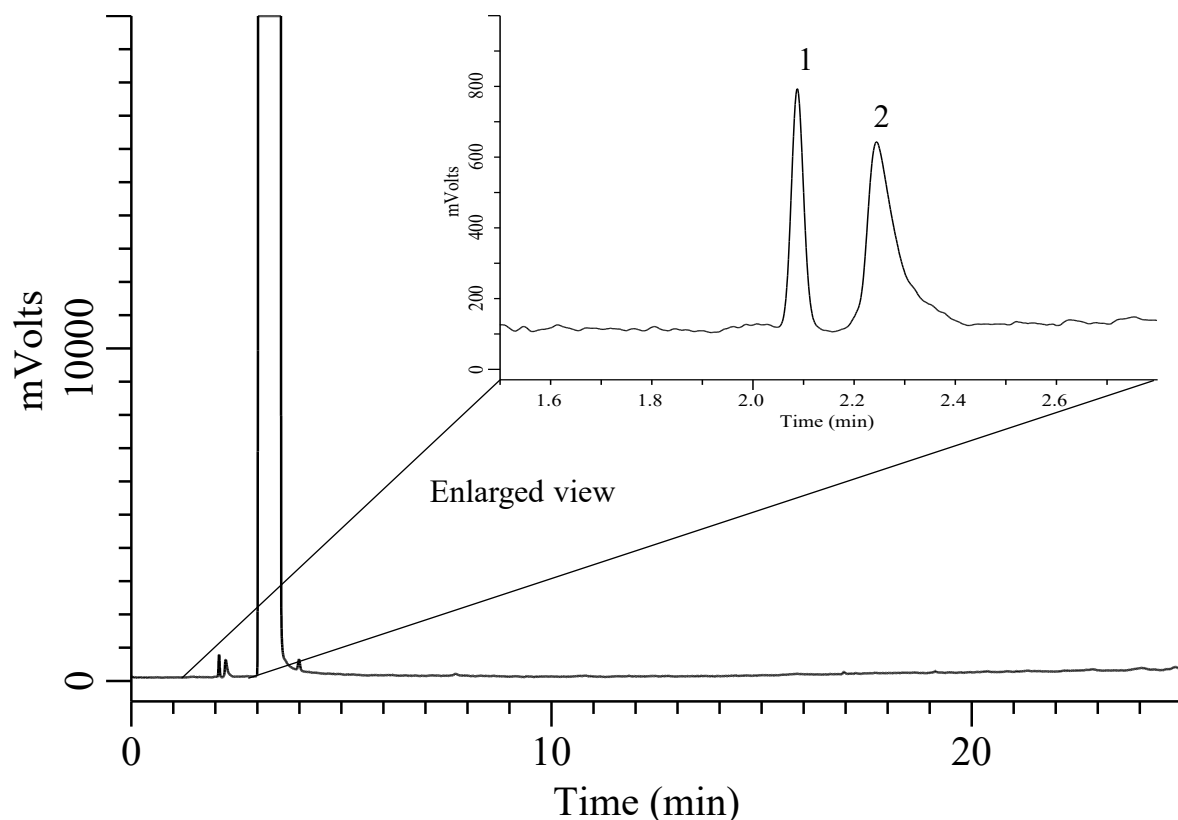


Analysis of Alcohol

(Under the Condition of USP-NF, IMPURITIES)

(Under the Condition of EP 10.0, Volatile impurities)

(Under the Condition of JP 19th, Purity)



Conditions

System	: GC-4000 Plus system	Analyte :	
Column	: InertCap 624 for Ethanol (GL Sciences Inc.) 0.32 mm I.D. x 30 m df = 1.8 μ m	1. Acetaldehyde	10 μ L/L
Column Cat. No.	: 1010-14750	2. Methanol	10 μ L/L
Column Temp.	: 40 $^{\circ}$ C (12 min) - 10 $^{\circ}$ C/min - 240 $^{\circ}$ C (10 min)	Analyte in Ethanol	
Carrier Gas	: He 2.14 mL/min, Constant flow	Resolution	
Injection	: Split 42.8 mL/min 200 $^{\circ}$ C	(1,2)	: 2.24 (\geq 1.5)
Detection	: FID Auto Range 280 $^{\circ}$ C		
Injection Vol.	: 1.0 μ L		
Inlet Liner	: Topaz Liner, Splitless (Cat. No. 3015-93133)		
Sample	: Standard		