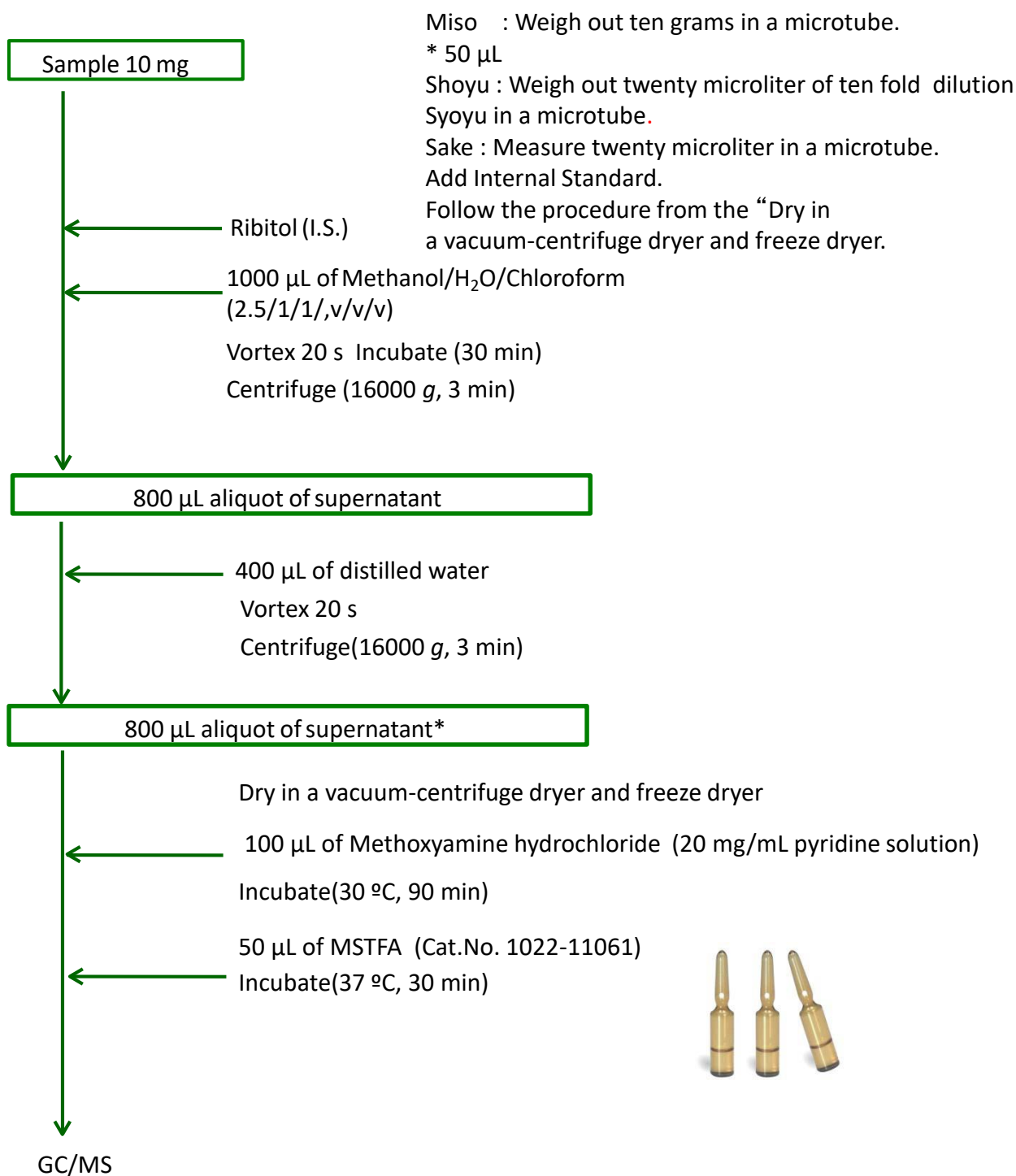


Fermented foods like Miso, Sake, Syoyu made from cereals contain amino acids, organic acids, sugar and so on. In this study, they were extracted, derivatized, and analysed with gas chromatography/mass spectrometry. The silylated compounds in Miso, Sake and Syoyu extracts were identified using InertCap 5MS/NP metabolites Library (No.81).

Procedure of sample preparation

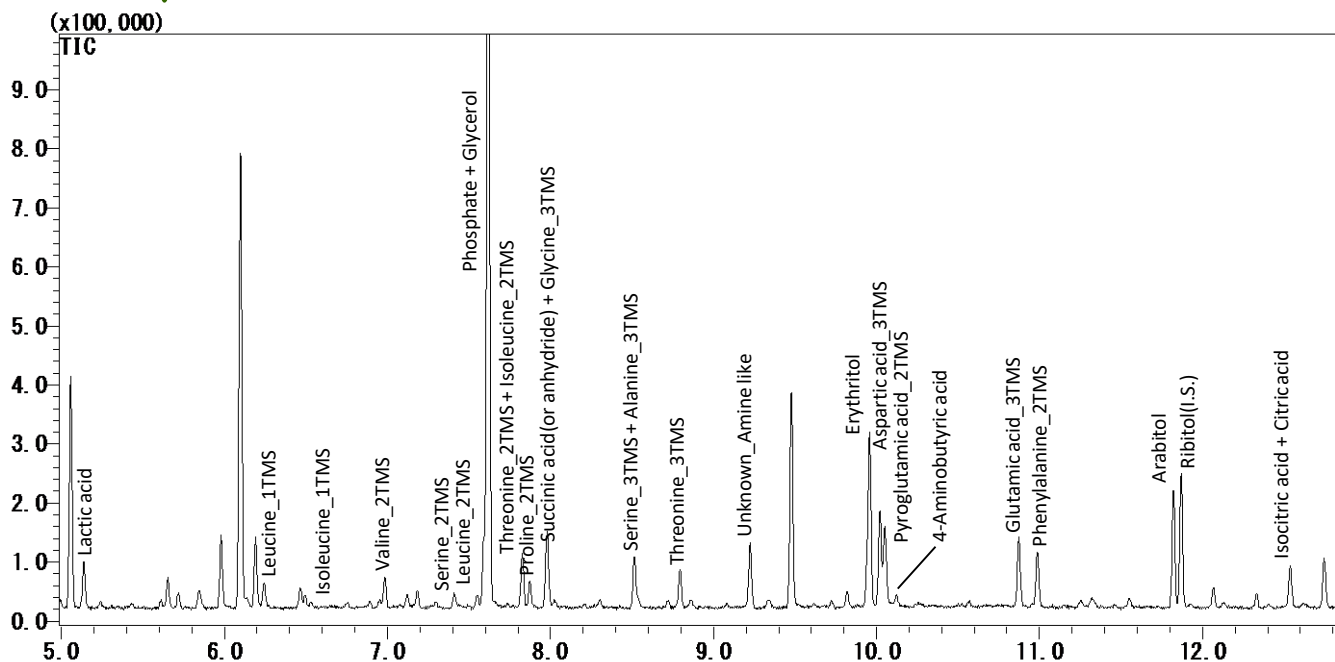
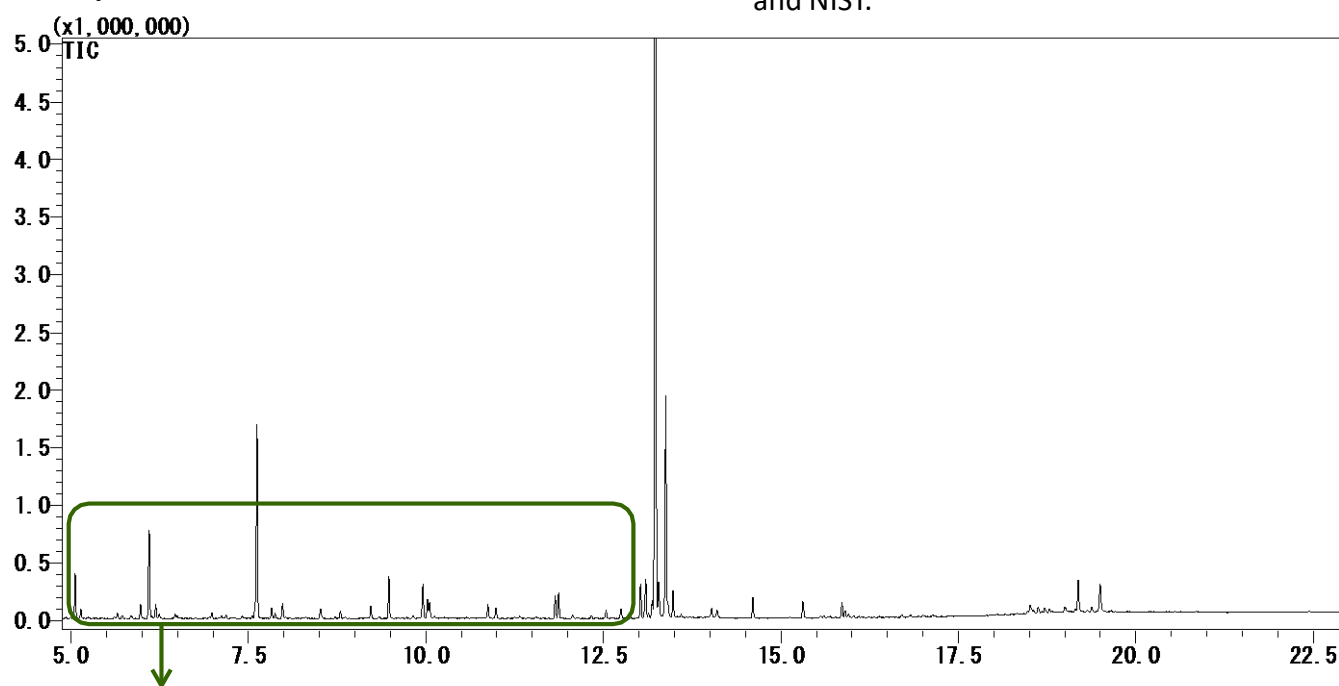


Analysis of Miso

GC/MS Conditions

System	: GC-MS
Column	: InertCap 5MS/NP 0.25 mm I.D. × 30 m df = 0.25 μm (Cat.No. 1010-18642)
Injection	: Split Constant Pressure 75 kPa
Injection Temp.	: 230 °C
Oven Temp.	: 80 °C (2 min) - 15 °C/min - 330 °C (13 min)
Carrier gas	: Helium
Septum purge flow	: 5 mL/min
Split ratio	: 25:1
Interface Temp.	: 250 °C
Ion source Temp.	: 200 °C
Ionization Voltage	: 70 eV
Scan range	: m/z 85 - 500
Inj. Vol.	: 1 μL

The silylated compounds in Miso extract were identified based on retention index and mass spectrum using InertCap metabolites library (Technical note No.81) and NIST.

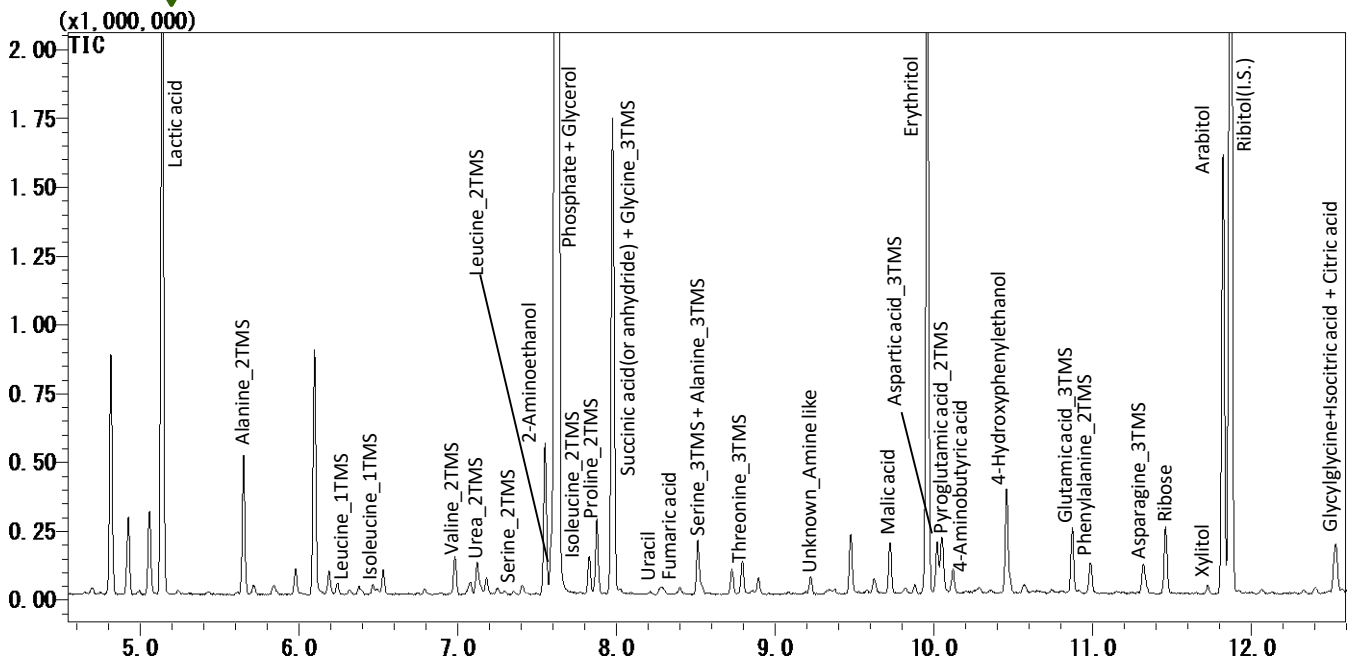
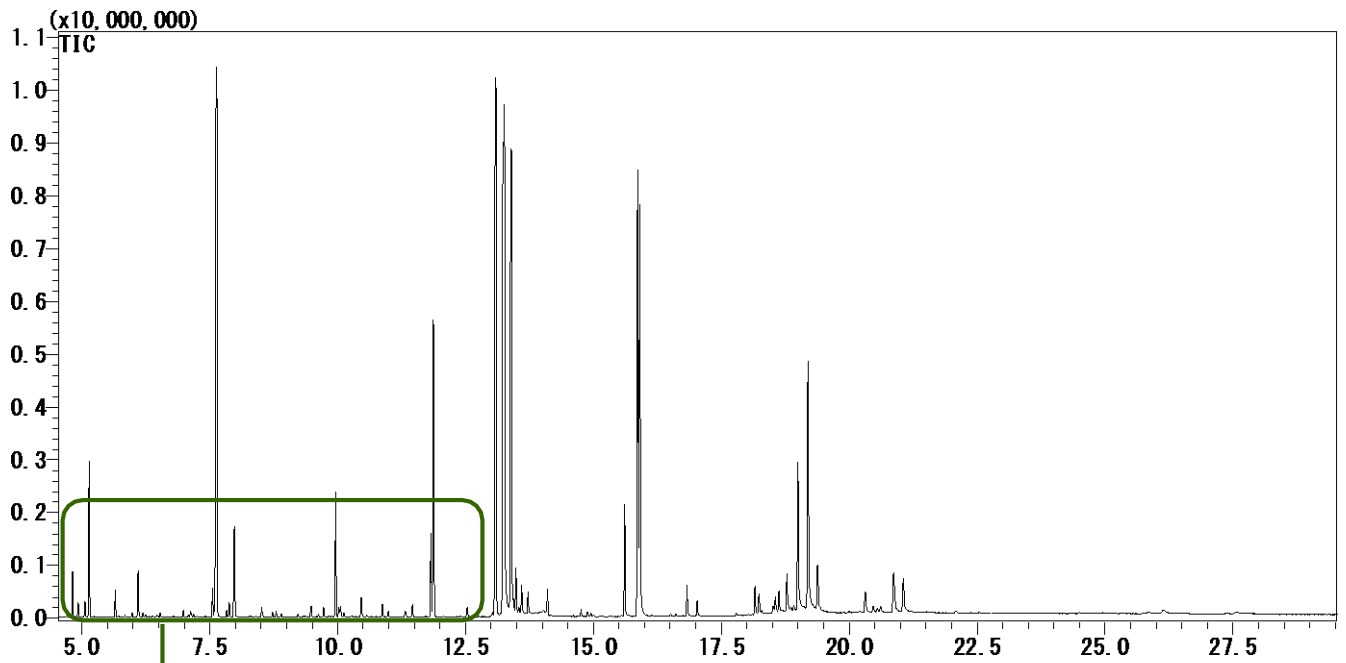


Analysis of Sake

GC/MS Conditions

System Column : GC-MS
 : InertCap 5MS/NP 0.25 mm I.D. × 30 m df = 0.25 μm
 (Cat.No. 1010-18642)
 Injection : Split Constant Pressure 75 kPa
 Inj. Temp. : 230 °C
 Oven Temp. : 80 °C (2 min) - 15 °C /min - 330 °C (13 min)
 Carrier gas : Helium
 Septum purge flow : 5 mL/min
 Split ratio : 25:1
 Interface Temp. : 250 °C
 Ion source Temp. : 200 °C
 Ionization Voltage : 70 eV
 Scan range : m/z 85 - 500
 Inj. Vol. : 1 μL

The silylated compounds in Sake extract were identified based on retention index and mass spectrum using InertCap metabolites library (Technical note No.81) and NIST.

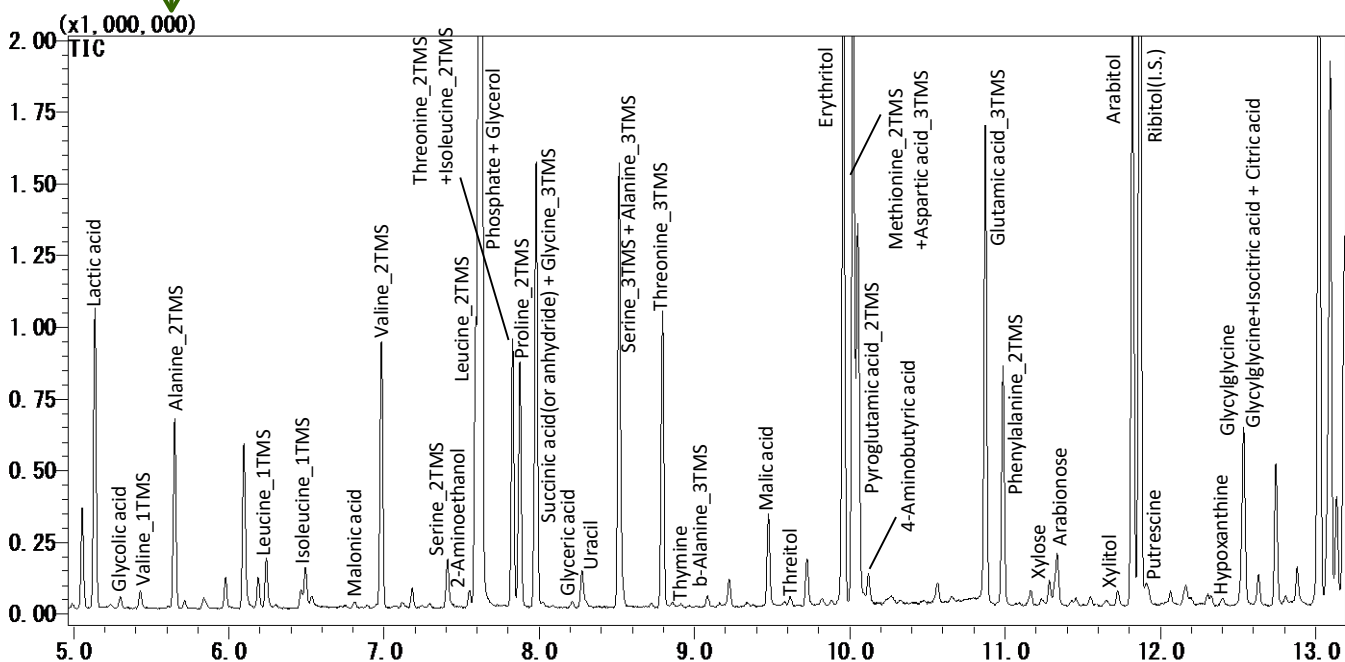
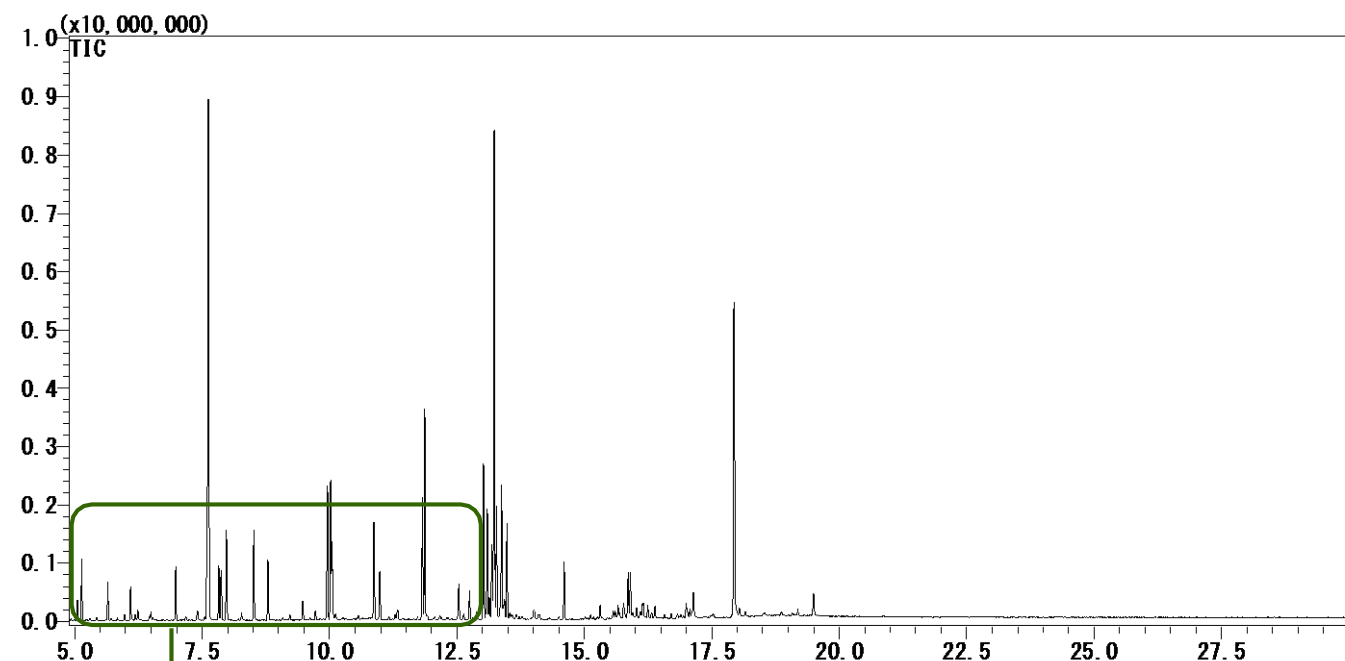


Analysis of Soyoyu

GC/MS Conditions

System Column : GC-MS
 : InertCap 5MS/NP 0.25 mm I.D. × 30 m df = 0.25 μm
 (Cat.No. 1010-18642)
 Injection : Split Constant Pressure 75 kPa
 Inj. Temp. : 230 °C
 Oven Temp. : 80 °C (2 min) - 15 °C /min - 330 °C (13 min)
 Carrier gas : Helium
 Septum purge flow : 5 mL/min
 Split ratio : 25:1
 Interface Temp. : 250 °C
 Ion source Temp. : 200 °C
 Ionization Voltage : 70 eV
 Scan range : m/z 85 - 500
 Inj. Vol. : 1 μL

The silylated compounds in Soyoyu extract were identified based on retention index and mass spectrum using InertCap metabolites library (Technical note No.81) and NIST.



Aloutput is available for peak identification. In that case, it is convenient to use the *n*-alkane standard solution C9-C40 in *n*-Hexane.

What is Aloutput?

- Software for metabolome analyses based on Excel (upto 2007)
- Peak identification based on retention indices and mass spectrum
- Auto peak identification, PCA analysis, PLS analysis, t-test
- Free software!
- Everybody can download, now!

http://prime.psc.riken.jp/Metabolomics_Software/Aloutput/index.html

n-Alkane standard solution C9-C40 in *n*-Hexane

Concentration: 50 µg/mL each component of *n*-Hexane

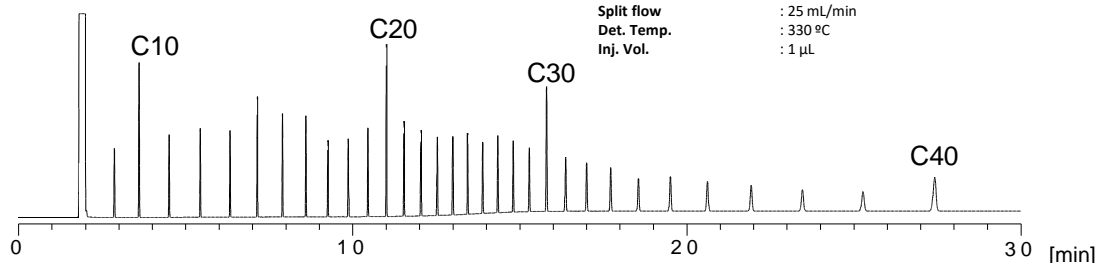
※C10,C20,C30,C40 are 100 µg/mL

Volume: 1 mL

Packaging: ampoule of 1 mL

Conditions

System : GC-FID
 Column : InertCap 5MS/NP
 0.25 mm I.D. × 30 m, df = 0.25 µm
 Injection Inj. : Split 120 kPa
 Temp. : 230°C
 Oven Temp. : 100 °C (2 min) -20 °C/min - 330 °C (17 min hold)
 Carrier gas : Helium
 Split flow : 25 mL/min
 Det. Temp. : 330 °C
 Inj. Vol. : 1 µL



Description	Volume	Cat.No.
<i>n</i> -Alkane standard solution C9-C40 in C6 (cold strage)	1 mL	1021-58321
	1 mL × 5	1021-58325

This product contains hazardous material which requires special freight handling, and then additional charges apply. Please contact your local distributor.

GL Sciences disclaims any and all responsibility for any injury or damage which may be caused by this data directly or indirectly. We reserve the right to amend this information or data at any time and without any prior announcement.

GL Sciences disclaims any and all responsibility for any injury or damage which may be caused by this data directly or indirectly. We reserve the right to amend this information or data at any time and without any prior announcement.

GL Sciences, Inc. Japan

22-1 Nishishinjuku 6-Chome
 Shinjuku-ku, Tokyo,
 163-1130, Japan
 Phone: +81-3-5323-6620
 Fax: +81-3-5323-6621
 Email: world@gls.co.jp
 Web: www.glsciences.com

GL Sciences B.V.

De Sleutel 9
 5652 AS Eindhoven
 The Netherlands
 Phone: +31 (0)40 254 95 31
 Email: info@glscienc.es
 Web: www.glsciences.eu

GL Sciences (ShangHai) Ltd.

Tower B, Room 2003,
 Far East International Plaza,
 NO,317 Xianxia Road,
 Changning District.
 Shanghai, China P.C. 200032
 Phone: +86 (0)21-6278-2272
 Email: contact@glscienc.es.com.cn
 Web: www.glsciences.com.cn

GL Sciences, Inc. USA

4733 Torrance Blvd. Suite 255
 Torrance, CA 90503
 Phone: 310-265-4424
 Fax: 310-265-4425
 Email: info@glscienc.esinc.com
 Web: www.glsciencesinc.com

International Distributors

Visit our Website at:

<https://www.glsciences.com/company/distributor.html>