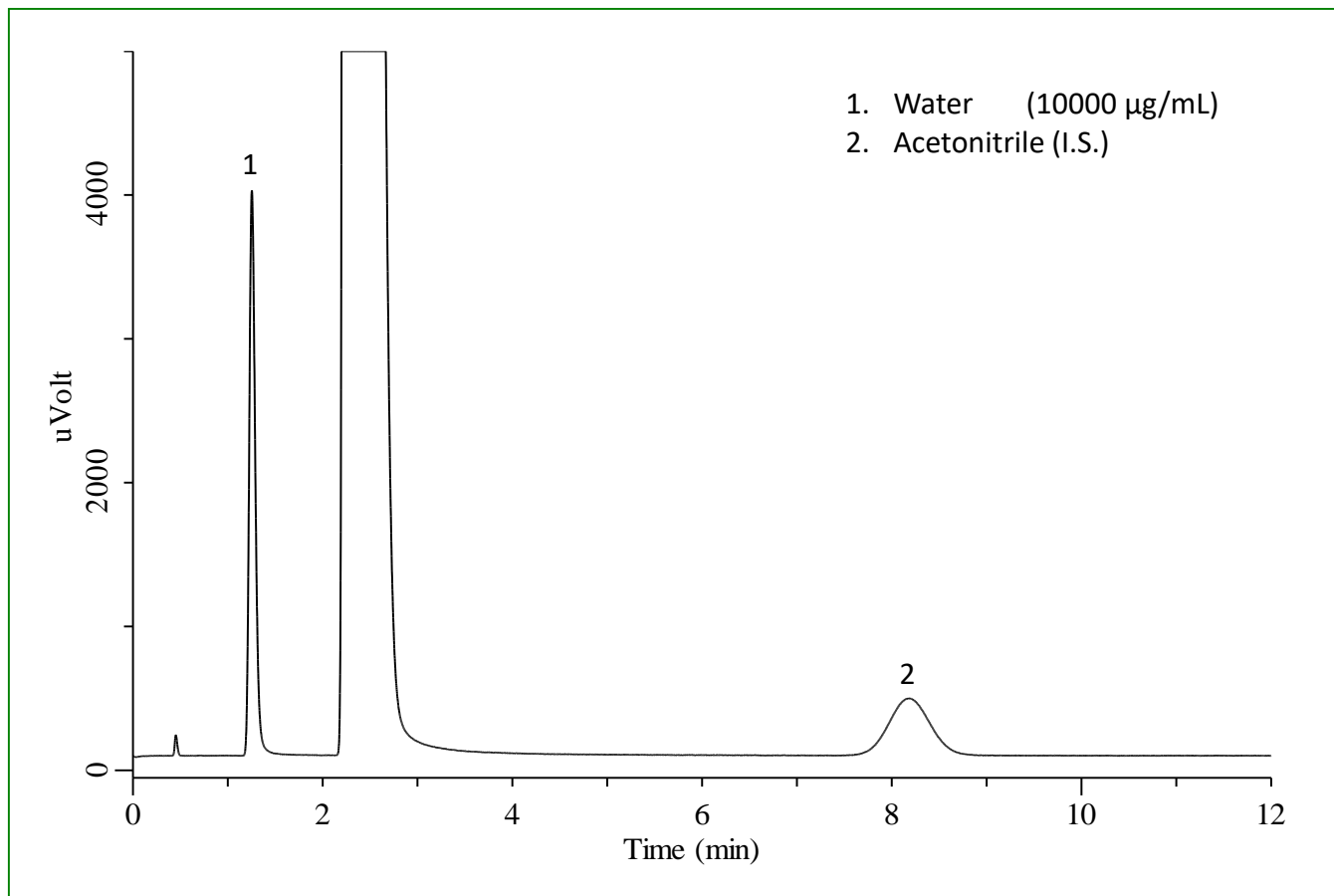


## Water Testing of Panipenem- with Reference to the Japanese Pharmacopoeia 16th Edition

Panipenem is an antibiotic that is active against a variety of bacteria, including *Streptococcus pneumoniae*, *Escherichia coli*, and *Pseudomonas aeruginosa*. Indications include sepsis, pneumonia, osteomyelitis, and sinusitis.

In this application, a water test as described in the 16th edition of the Japanese Pharmacopoeia was performed using a packed column. Excellent results were achieved in terms of both separation and reproducibility for water and acetonitrile in methanol.

### Example: measurement of standard



### Measurement conditions

<b>System</b>	: GC - TCD	<b>Injection</b>	: Direct
<b>Column</b>	: Porapak Q 80/100 Glass 2 m x 3 mm I.D.		: 200 °C
<b>Col. Temp.</b>	: 125 °C	<b>Injection Vol.</b>	: 1 µL
<b>Carrier Gas</b>	: He 200 kPa	<b>Detection</b>	: TCD 100 mA 100 °C
		<b>Sample</b>	: Standard Analytes in Methanol

## Requirements for System Suitability

1. Water, methanol and an internal standard (acetonitrile) were eluted in this order with the resolution between water and the internal standard being not less than 10.
2. With 6 repeat injections, the relative standard deviation of the ratio of the peak area of water to internal standard is not more than 5.0 %.



### Our results

**Resolution :15.29**

**Relative standard deviation: 0.98 % (see Table 1)**

## Relative standard deviation

Table 1. System repeatability test results

Frequency	①Water	②Internal standard	①/②
1	17520	11313	1.549
2	17166	11008	1.559
3	17968	11515	1.560
4	17447	11137	1.567
5	16755	10986	1.525
6	17449	11168	1.562
Mean	17384	11188	1.554
Standard deviation	403	199	0.015
Relative standard deviation (%)	2.32	1.78	0.98

GL Sciences disclaims any and all responsibility for any injury or damage which may be caused by this data directly or indirectly. We reserve the right to amend this information or data at any time and without any prior announcement.

### GL Sciences, Inc. Japan

22-1 Nishishinjuku 6-Chome  
Shinjuku-ku, Tokyo,  
163-1130, Japan  
Phone: +81-3-5323-6620  
Fax: +81-3-5323-6621  
Email: [world@glsc.co.jp](mailto:world@glsc.co.jp)  
Web: [www.glsciences.com](http://www.glsciences.com)

### GL Sciences B.V.

De Sleutel 9  
5652 AS Eindhoven  
The Netherlands  
Phone: +31 (0)40 254 95 31  
Email: [info@glsciences.eu](mailto:info@glsciences.eu)  
Web: [www.glsciences.eu](http://www.glsciences.eu)

### GL Sciences, Inc. USA

4733 Torrance Blvd. Suite 255  
Torrance, CA 90503  
Phone: 310-265-4424  
Fax: 310-265-4425  
Email: [info@glsciencesinc.com](mailto:info@glsciencesinc.com)  
Web: [www.glsciencesinc.com](http://www.glsciencesinc.com)

### GL Sciences (ShangHai) Ltd.

Tower B, Room 2003,  
Far East International Plaza,  
NO,317 Xianxia Road,  
Changning District.  
Shanghai, China P.C. 200032  
Phone: +86 (0)21-6278-2272  
Email: [contact@glsciences.com.cn](mailto:contact@glsciences.com.cn)  
Web: [www.glsciences.com.cn](http://www.glsciences.com.cn)

### International Distributors

Visit our Website at [www.glsciences.com/distributors](http://www.glsciences.com/distributors)