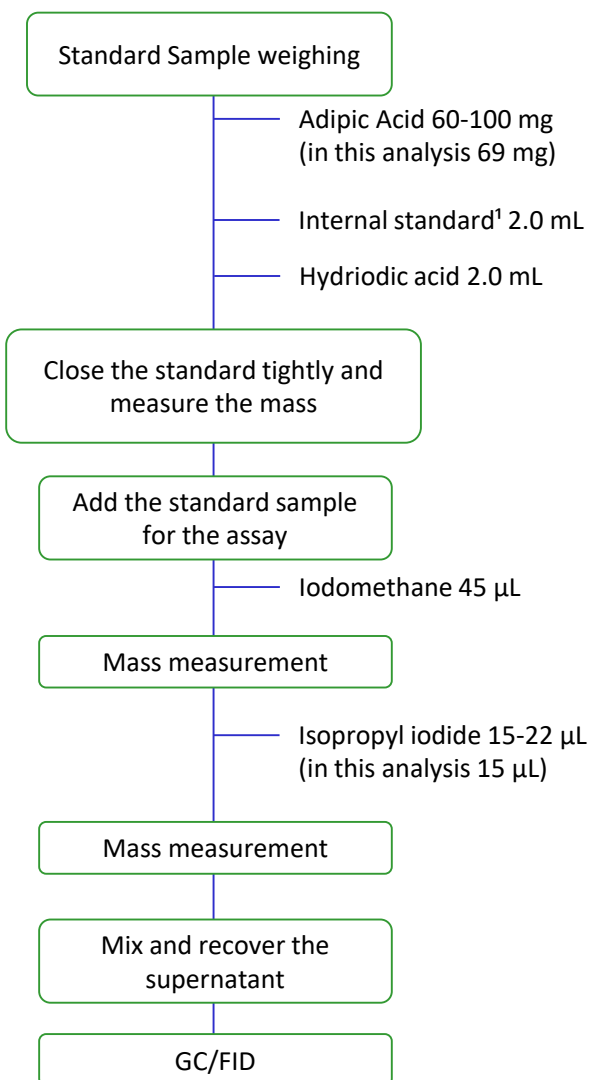


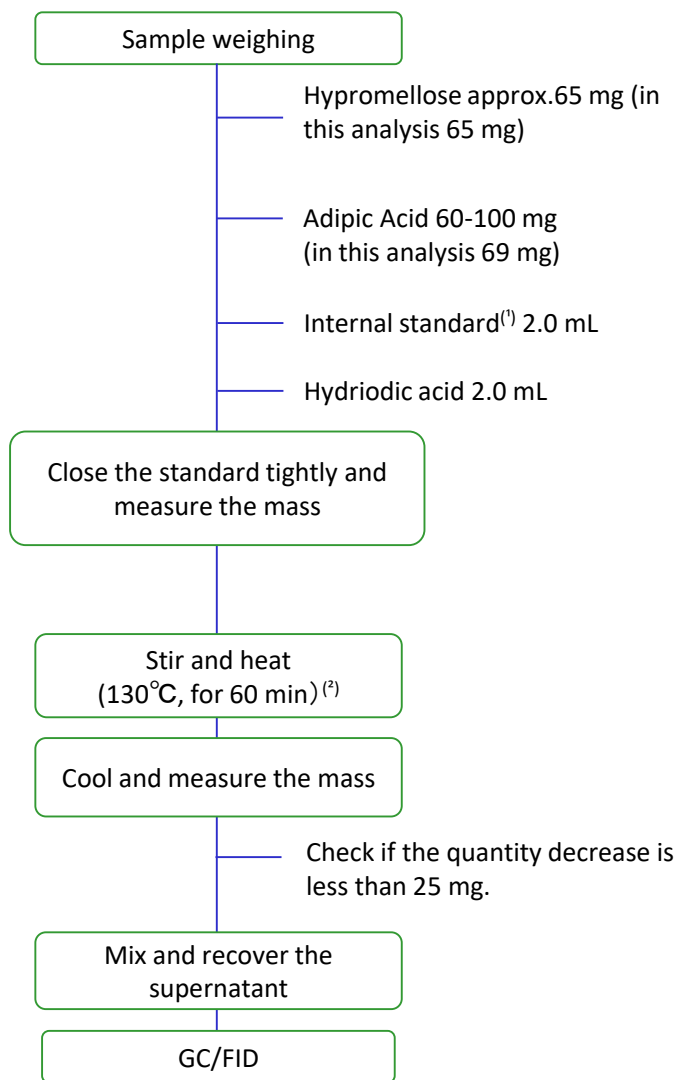
This note shows the analysis of Hypromellose which was conducted under the assay method of the new 17<sup>th</sup> edition of the Japanese Pharmacopeia (JP17). This new method replaces the use of packed column, which was indicated in the old method, with a GC capillary column. Successful results were obtained due to the pretreatment and the analysis methods contained in this application.

## Pre-treatment

### Standard sample



### Sample



<sup>(1)</sup> 3 mL of n-octane was diluted to volume in o-Xylene to 100m.

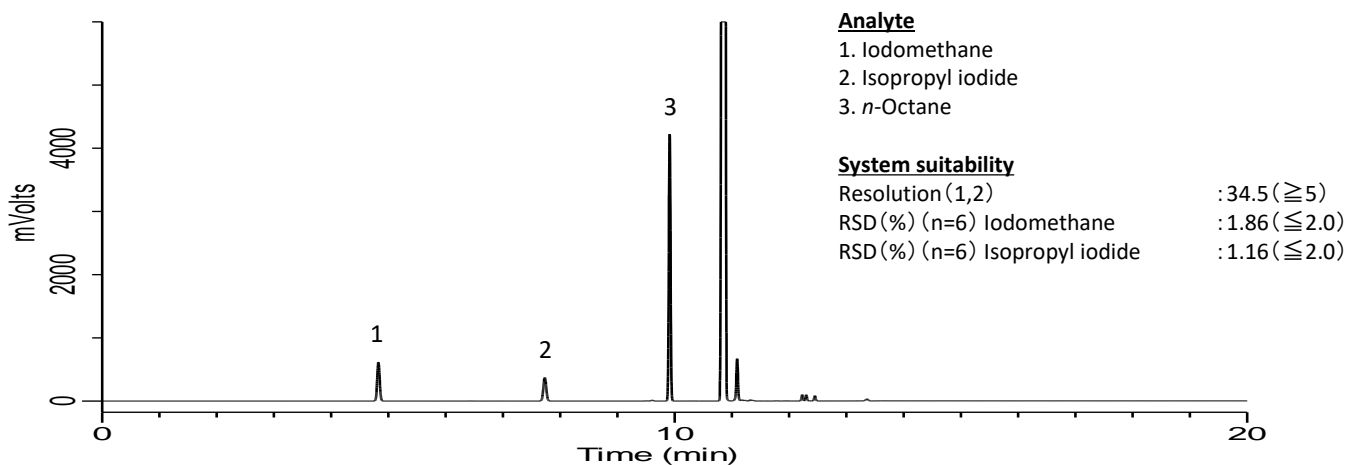
<sup>(2)</sup> This procedure was conducted by using a Reacti-Therm Heating and Stirring Module.

Analysis Conditions and Results

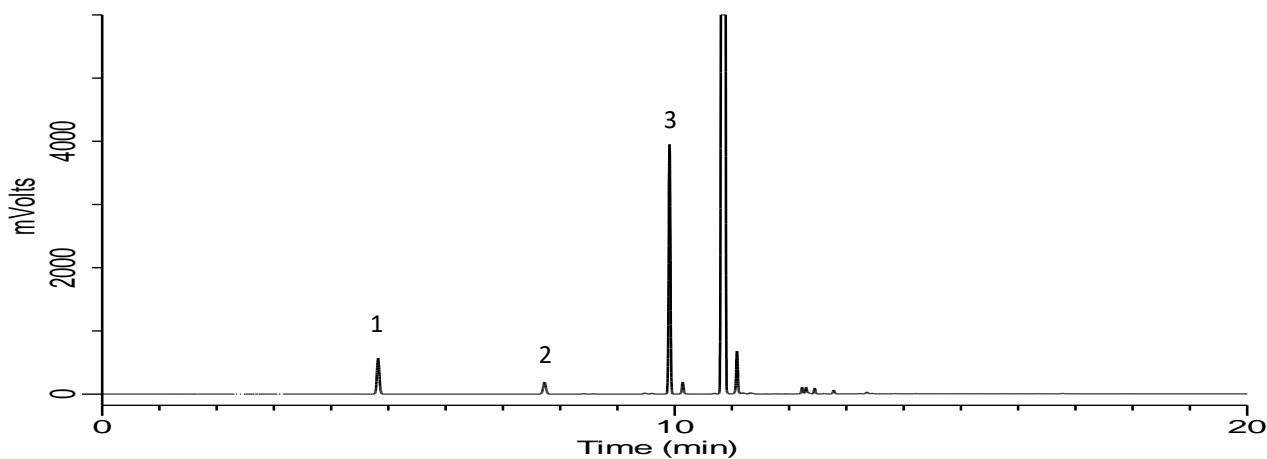
**Conditions**

**System** : GC-FID  
**Column** : InertCap 1  
 0.53 mmI.D. × 30 m df = 3.00 μm (Cat.No.: 1010-11448)  
**Col. Temp.** : 50 °C(3 min) - 10 °C/min - 100 °C - 35 °C/min - 250 °C(8 min)  
**Carrier Gas** : He 3 mL/min (Internal standard retention time 10 min)  
**Injection** : Split 1:40  
 250 °C  
**Detection** : FID Auto Range  
 280 °C  
**Sample Size** : 1 μL

Standard sample chromatogram



Sample chromatogram



GL Sciences disclaims any and all responsibility for any injury or damage which may be caused by this data directly or indirectly. We reserve the right to amend this information or data at any time and without any prior announcement.

**GL Sciences, Inc. Japan**

22-1 Nishishinjuku 6-Chome  
 Shinjuku-ku, Tokyo,  
 163-1130, Japan  
 Phone: +81-3-5323-6620  
 Fax: +81-3-5323-6621  
 Email: [world@glsci.co.jp](mailto:world@glsci.co.jp)  
 Web: [www.glsciencences.com](http://www.glsciencences.com)

**GL Sciences B.V.**

De Sleutel 9  
 5652 AS Eindhoven  
 The Netherlands  
 Phone: +31 (0)40 254 95 31  
 Email: [info@glsciencences.eu](mailto:info@glsciencences.eu)  
 Web: [www.glsciencences.eu](http://www.glsciencences.eu)

**GL Sciences (ShangHai) Ltd.**

Tower B, Room 2003,  
 Far East International Plaza,  
 NO,317 Xianxia Road,  
 Changning District.  
 Shanghai, China P.C. 200032  
 Phone: +86 (0)21-6278-2272  
 Email: [contact@glsciencences.com.cn](mailto:contact@glsciencences.com.cn)  
 Web: [www.glsciencences.com.cn](http://www.glsciencences.com.cn)

**GL Sciences, Inc. USA**

4733 Torrance Blvd. Suite 255  
 Torrance, CA 90503  
 Phone: 310-265-4424  
 Fax: 310-265-4425  
 Email: [info@glsciencencesinc.com](mailto:info@glsciencencesinc.com)  
 Web: [www.glsciencencesinc.com](http://www.glsciencencesinc.com)

**International Distributors**

Visit our Website at:  
<https://www.glsciencences.com/company/distributor.html>

