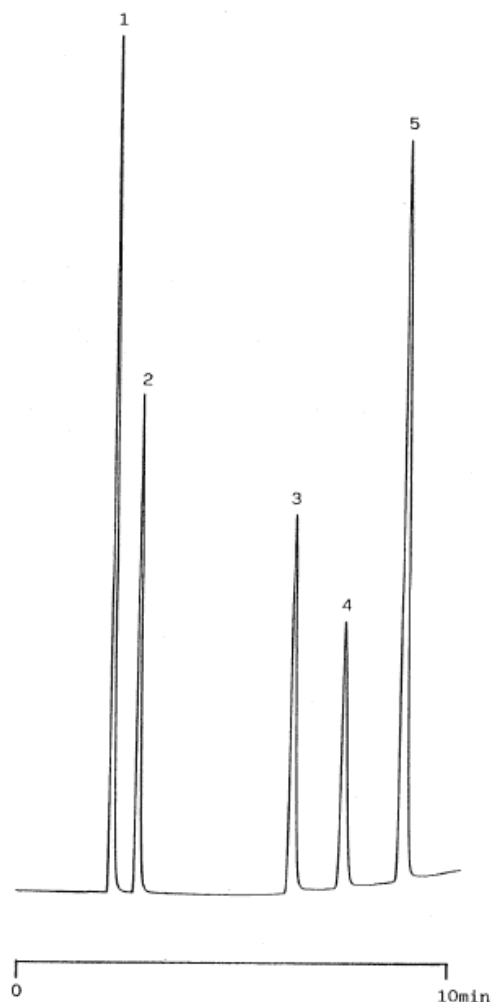


Components of Cold-drugs

Data No. LA138-0000



Column : Inertsil ODS-2
5 μ m
150 \times 4.6 mmI.D.

Column Cat. No. : 5020-01101

Eluent : A:CH₃OH/0.1% H₃PO₄=30/70
B:CH₃OH/0.1% H₃PO₄=80/20
A/B 100/0 \rightarrow (15min) \rightarrow 0/100

Flow rate : 1.0 mL/min.

Col. Temp. : 40°C

Detection : UV 220 nm

Injection Vol. :

Sample :

Solutes : 1. Acetaminophen
2. Caffeine
3. Ethenzamide
4. Bucetin
5. Acetyl salicylic acid