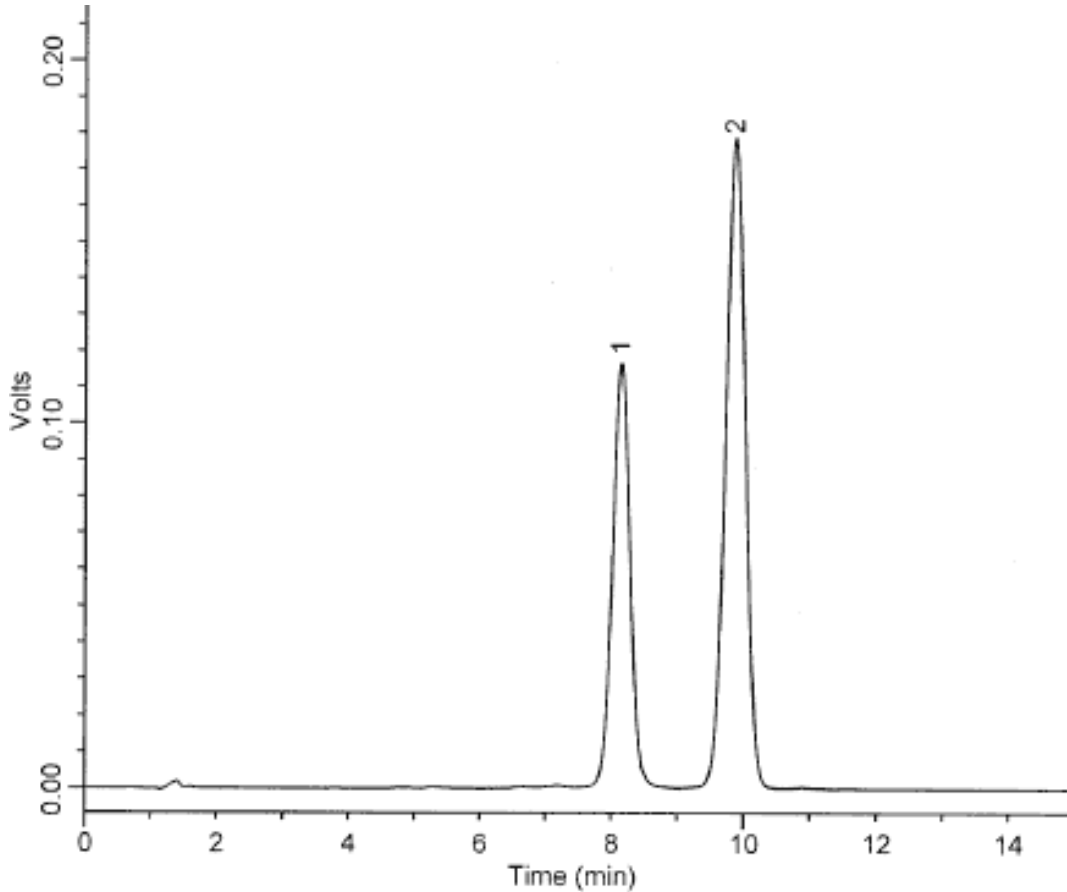


## Analysis of Tocopherol succinate



**Rs=3.3**

Column :Inertsil ODS-3V  
5µm  
150 × 4.6mmI.D.

Solutes : 1. DL-α - Tocopherol succinate(1.0mg/mL)  
2. DL-α - Tocopherol(1.0mg/mL)

Column Cat. No. :

Eluent :CH<sub>3</sub>OH/H<sub>2</sub>O/CH<sub>3</sub>COOH=97/2/1

Flow rate :1.4 mL/min.

Col. Temp. :30°C

Detection :UV 284 nm

Injection Vol. :20µL

Sample :Tocopherols