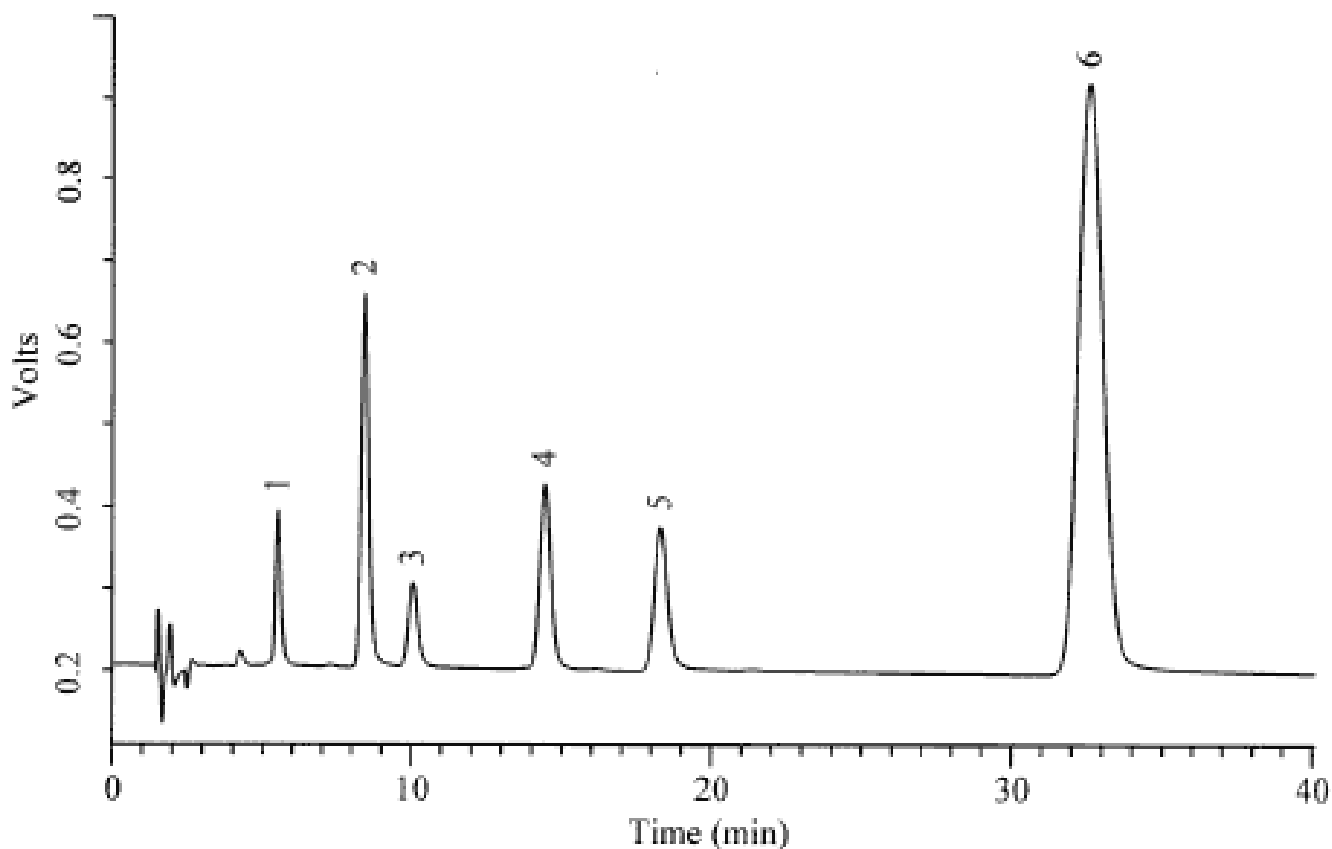


Analysis of Tryptophan

Data No. LA231-0000



Column	: Inertsil ODS-3 5µm 150 × 1.5mm I.D.	Solutes	: 1. Tryptophan(TRP)(10µg/mL) 2. Kynurenine(KYN)(10µg/mL) 3. 5-Hydroxytryptophan(5HTP)(1µg/mL) 4. 5-Hydroxytryptamine(Serotonin)(5HT)(1µg/mL) 5. 5-Hydroxyindoleacetic acid(5HIAA)(1µg/mL) 6. 3,4-Dihydroxybenzylamine Hydrobromide (DHBA)(1µg/mL)
Column Cat. No. :			
Eluent	: 50mM phosphoric acid, 50mM citric acid, 100mg/L SOS, 40mg/L EDTA(pH3.0)/Methanol=86/14		
Flow rate	: 0.1 mL/min.		
Col. Temp.	: 30°C		
Detection	: ECD 850mV vs. Ag/AgCl 1000nA/V		
Injection Vol.	: 5µL		
Sample	: Metabolites of Tryptophan		