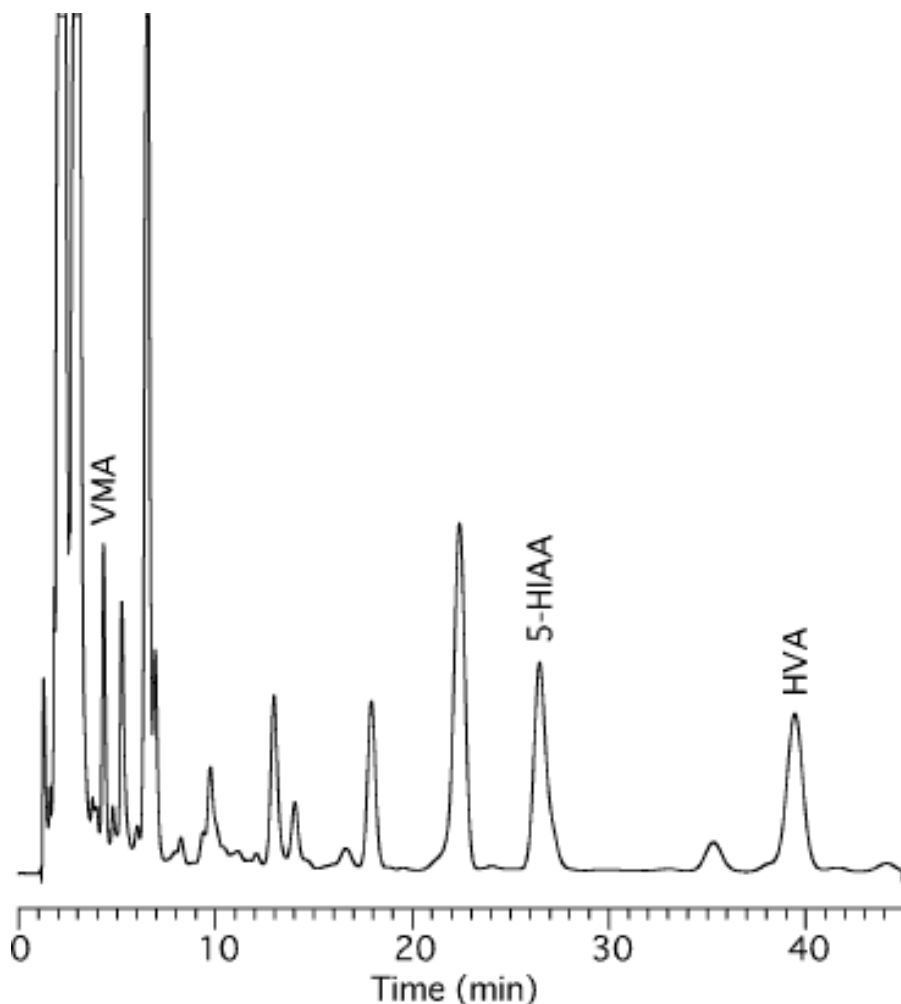


Analysis of VMA, 5-HIAA and HVA

Data No. LA236-0000



Column	:Inertsil ODS-3 5µm 150 × 4.6mmI.D.	Solutes	: 1. VMA 2. 5-HIAA 3. HVA
Column Cat. No. :			
Eluent	:Methanol/50mM phosphoric acid, 50mM citric acid, 20mg/l EDTA, 400mg/l IPCC-08 (pH3.0 with KOH) = 92/8 IPCC-08 : Sodium 1-Octanesulfonate		
Flow rate	:1mL/min		
Col. Temp.	:30°C		
Detection	:ECD 700mV vs. Ag/AgCl		
Injection Vol.	:10µL		
Sample	:liquid-liquid extract of urine		