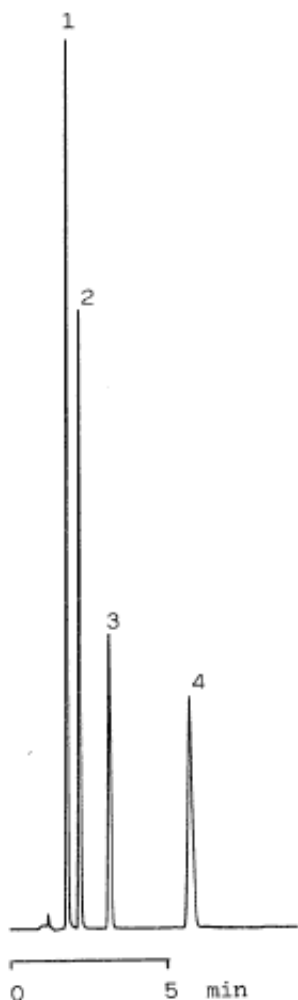


InertSearch™ for LC

Inertsil® Applications

Nitrosoamines

Data No. LA308-0000



Column : Inertsil ODS-2
5 μ m
150 \times 4.6mm I.D.

Column Cat. No. : 5020-01101

Eluent : CH₃CN/10mM K₂HPO₄=60/40

Flow rate : 1.0 mL/min.

Col. Temp. : 40°C

Detection : UV 230 nm

Injection Vol. :

Sample :

Solutes : 1. N-Nitrosodimethylamine
2. N-Nitrosodiethylamine
3. N-Nitrosodi-n-propylamine
4. N-Nitrosodiphenylamine