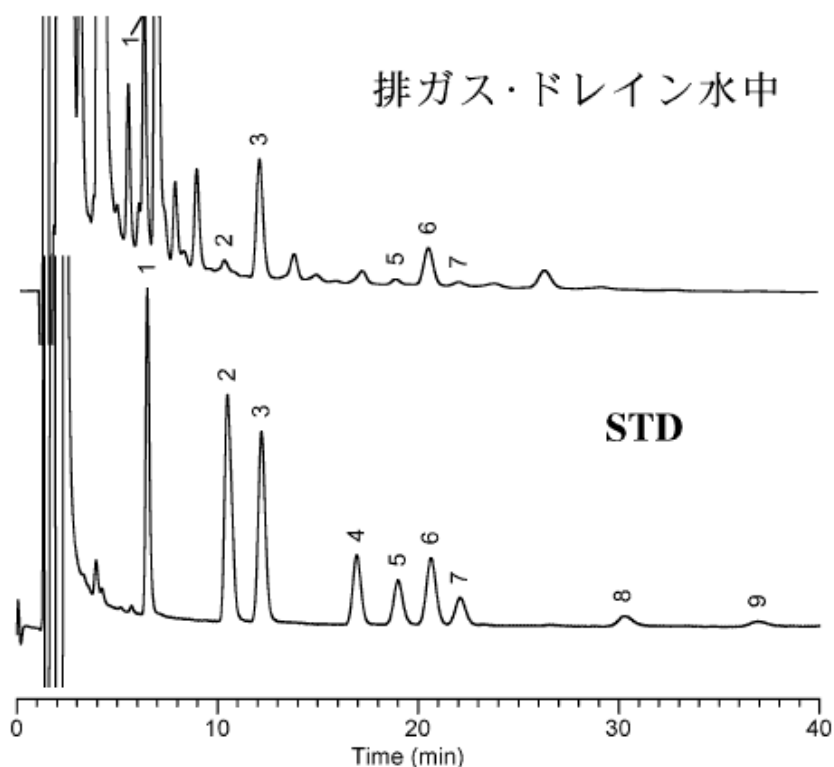


# InertSearch™ for LC

Inertsil® Applications

## Chlorophenols

Data No. LA330-0000



Column	: Inertsil ODS-3 5 $\mu$ m 150 $\times$ 1.5mm I.D.	Solutes	: 1. 2-Chlorophenol 2. 2,3-Dichlorophenol + 2,6-Dichlorophenol 3. 2,4-Dichlorophenol + 2,5-Dichlorophenol + 3,4-Dichlorophenol
Column Cat. No. :			
Eluent	: Acetonitrile / 50mM phosphate buffer (pH 5.0) = 40 / 60		4. 2,3,6-Trichlorophenol 5. 2,3,4-Trichlorophenol 6. 2,4,6-Trichlorophenol 7. 2,4,5-Trichlorophenol
Flow rate	: 0.1 mL/min.		8. 2,3,4,5-Tetrachlorophenol 9. Pentachlorophenol
Col. Temp.	: 40°C		(each 5 mg/mL)
Detection	: ECD 750mV vs Ag/AgCl		
Injection Vol.	: 20 $\mu$ L		
Sample	: Chlorophenols		