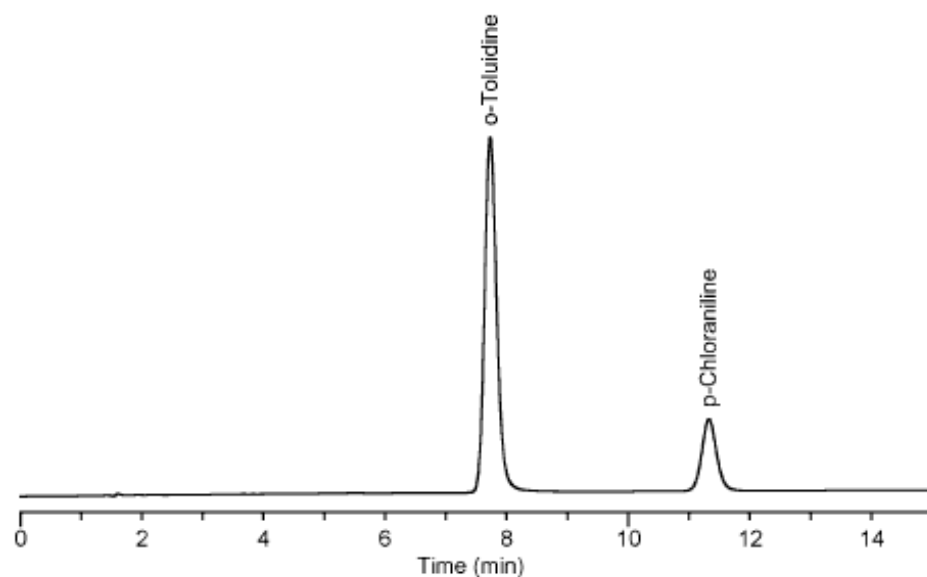


Analysis of Toluidine

Data No. LA356-0000



<u>Peak Name</u>	<u>R.Time</u>	<u>Area</u>
o-Toluidine	7.730	2.67843e+06
p-Chloraniline	11.327	658442

Column : Inertsil ODS-3
150 × 4.6 mmI.D.

Solutes : 1. o-Toluidine (10mg/L)
2. p-Chloraniline (10mg/L)

Column Cat. No. :

Eluent : CH₃OH/20 mM (NH₄)H₂PO₄(pH 6.9; Na₂HPO₄)

Flow rate : 1.0 mL/min.

Col. Temp. : 40°C

Detection : ECD 700mV vs. Ag/AgCl

Injection Vol. : 1μL

Sample : Toluidine