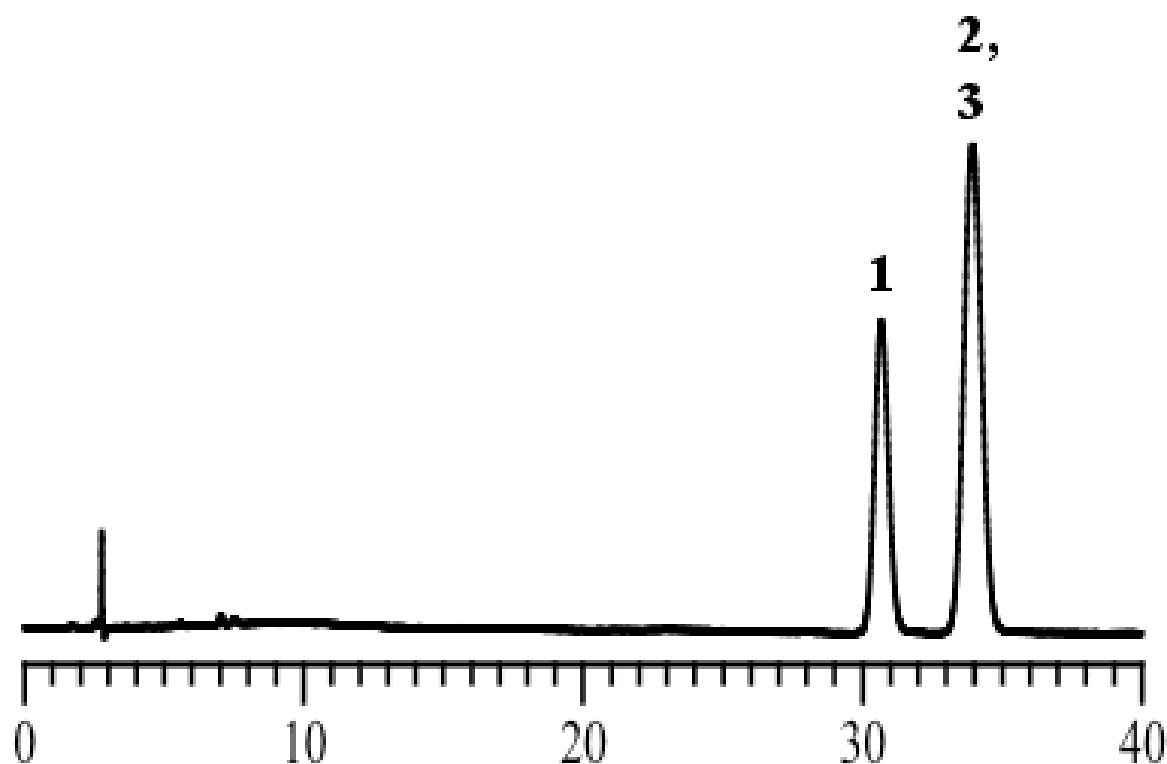


## Analysis of Xylene Isomers

Data No. LA477-0000



Column : Inertsil ODS-3  
5  $\mu$ m  
250 x 4.6 mm I.D.

Solutes : 1. o-Xylene  
2. m-Xylene  
3. p-Xylene

Column Cat. No. : 5020-01732

Eluent : A) Ethanol  
B)  $\beta$ -Cyclodextrin/H<sub>2</sub>O = 5/995, v/v  
A/B = 50/50, v/v

Flow rate : 1.0 mL/min.

Col. Temp. : 40°C

Detection : UV 254 nm

Injection Vol. :

Sample :