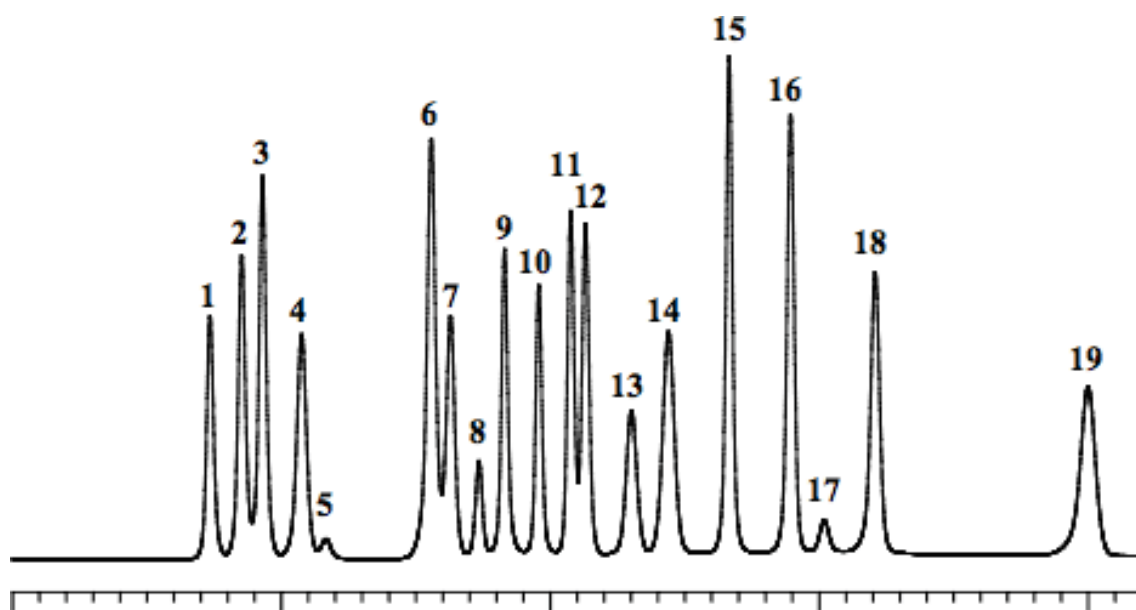


# Analysis of Amino acids, GABA (detected by Post-Column method)

Data No. LA492-0000



System : GL-7400 system

Column : #2619 (150 x 4.0 mm I.D.)

Column Cat. No.: 890-5203

Eluent :

Flow rate :

Col. Temp. : 60 °C

Detection : FL Ex 360 nm Em 450nm (GL-7453 FL Detector)

Injection Vol. : 10 µL

Sample : Amino acids

Solutes : 1. Aspartic acid [Asp] (40 nmol/mL)

2. Threonine [Thr] (40 nmol/mL)

3. Serine [Ser] (40 nmol/mL)

4. Glutamic acid [Glu] (40 nmol/mL)

5. Proline [Pro] (108 nmol/mL)

6. Glycine [Gly] (40 nmol/mL)

7. Alanine [Ala] (40 nmol/mL)

8. Cysteine [Cys] (40 nmol/mL)

9. Valine [Val] (40 nmol/mL)

10. Methionine [Met] (40 nmol/mL)

11. Isoleucine [Ile] (40 nmol/mL)

12. Leucine [Leu] (40 nmol/mL)

13. Tyrosine [Tyr] (40 nmol/mL)

14. Phenylalanine [Phe] (40 nmol/mL)

15. GABA (40 nmol/mL)

16. Lysine [Lys] (40 nmol/mL)

17. Ammonia [NH<sub>3</sub>] (40 nmol/mL)

18. Histidine [His] (40 nmol/mL)

19. Arginine [Arg] (40 nmol/mL)