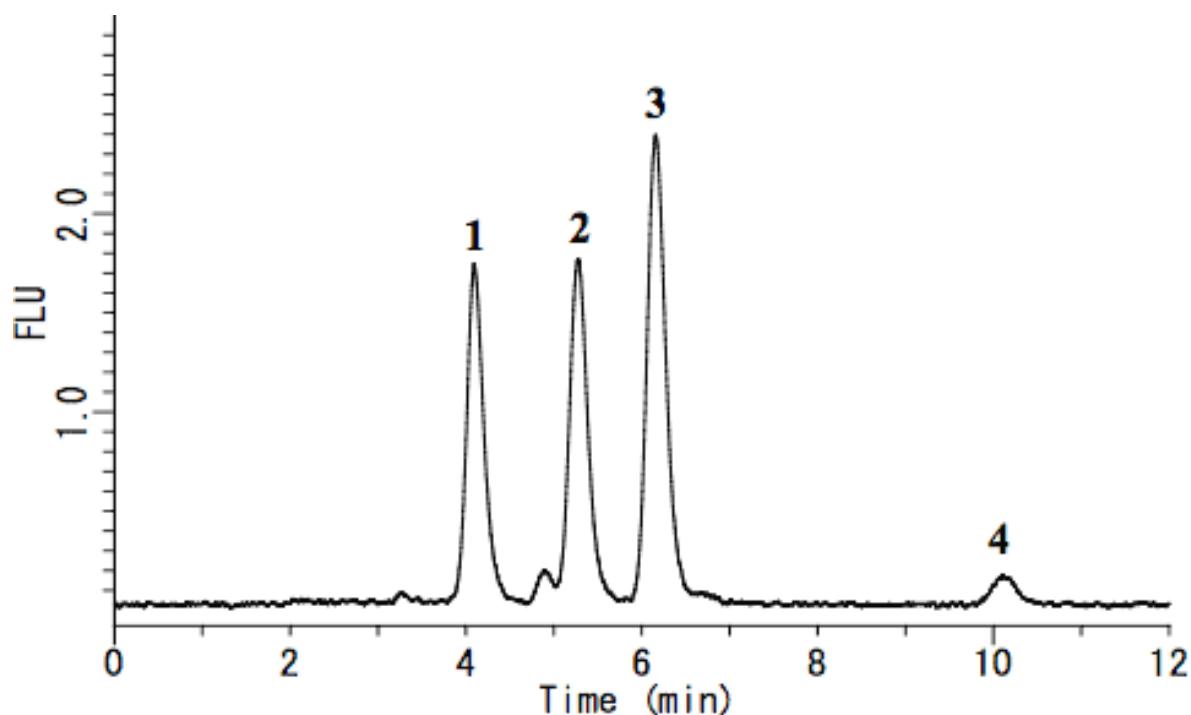


Analysis of Riboflavin phosphate (Vitamin B2)

Data No. LA498-0000



System	: GL-7400 system	Solutes	: 1. Flavin adenine dinucleotide (1000 $\mu\text{g/L}$)
Column	: Inertsil ODS-3 (5 μm , 150 x 4.6 mm I.D.)		2. Flavin mononucleotide (25 $\mu\text{g/L}$)
Column Cat. No.:			3. Riboflavin (40 $\mu\text{g/L}$)
Eluent	: A) CH ₃ OH		4. Lumiflavin (380 $\mu\text{g/L}$)
	: B) 10 mM NaH ₂ PO ₄ (pH 5.5)		
	: A/B = 35/65 (v/v)		
Flow rate	: 0.8 mL/min		
Col. Temp.	: 40 °C		
Detection	: FL Ex 445 nm Em 530 nm (GL-7453A FL Detector)		
Injection Vol.	: 20 μL		
Sample	:		