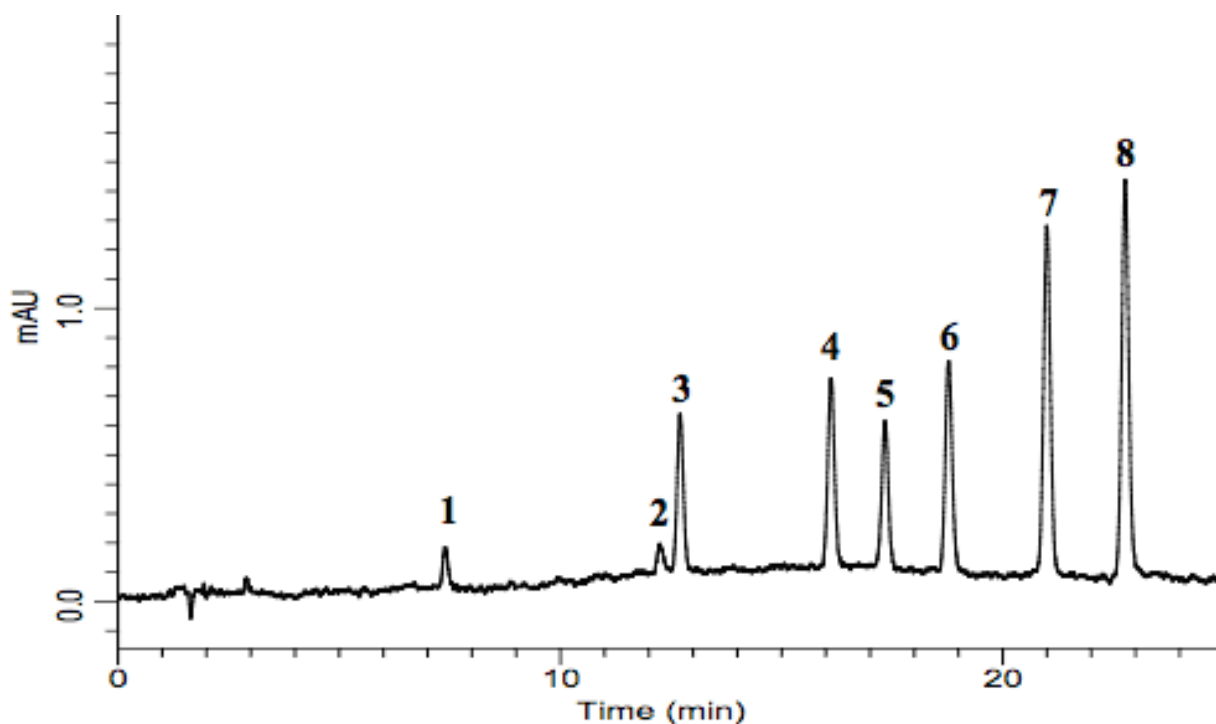


Analysis of Catechins

Data No. LA515-0754



System : GL-7400 system

Column : Inertsil ODS-3 (4 μ m, 150 \times 4.6 mm I.D.)

Column Cat. No. :

Eluent : A) CH₃OH

B) 10 mM NaH₂PO₄

A/B = 10/90 – 30 min – 50/50 ,v/v

Flow rate : 1.0 mL/min

Col. Temp. : 40 °C

Detection : UV 280 nm (GL-7450 UV Detector)

Injection Vol. : 10 μ L

Sample :

Solutes : 1. Gallo catechin (GC) (1 μ g/L)

2. Epigallo catechin (EGC) (1 μ g/L)

3. Catechin (C) (1 μ g/L)

4. Epigallo catechingallate (EGCg) (1 μ g/L)

5. Epicatechin (EC) (1 μ g/L)

6. Gallo catechingallate (GCg) (1 μ g/L)

7. Epicatechingallate (ECg) (1 μ g/L)

8. Catechingallate (Cg) (1 μ g/L)