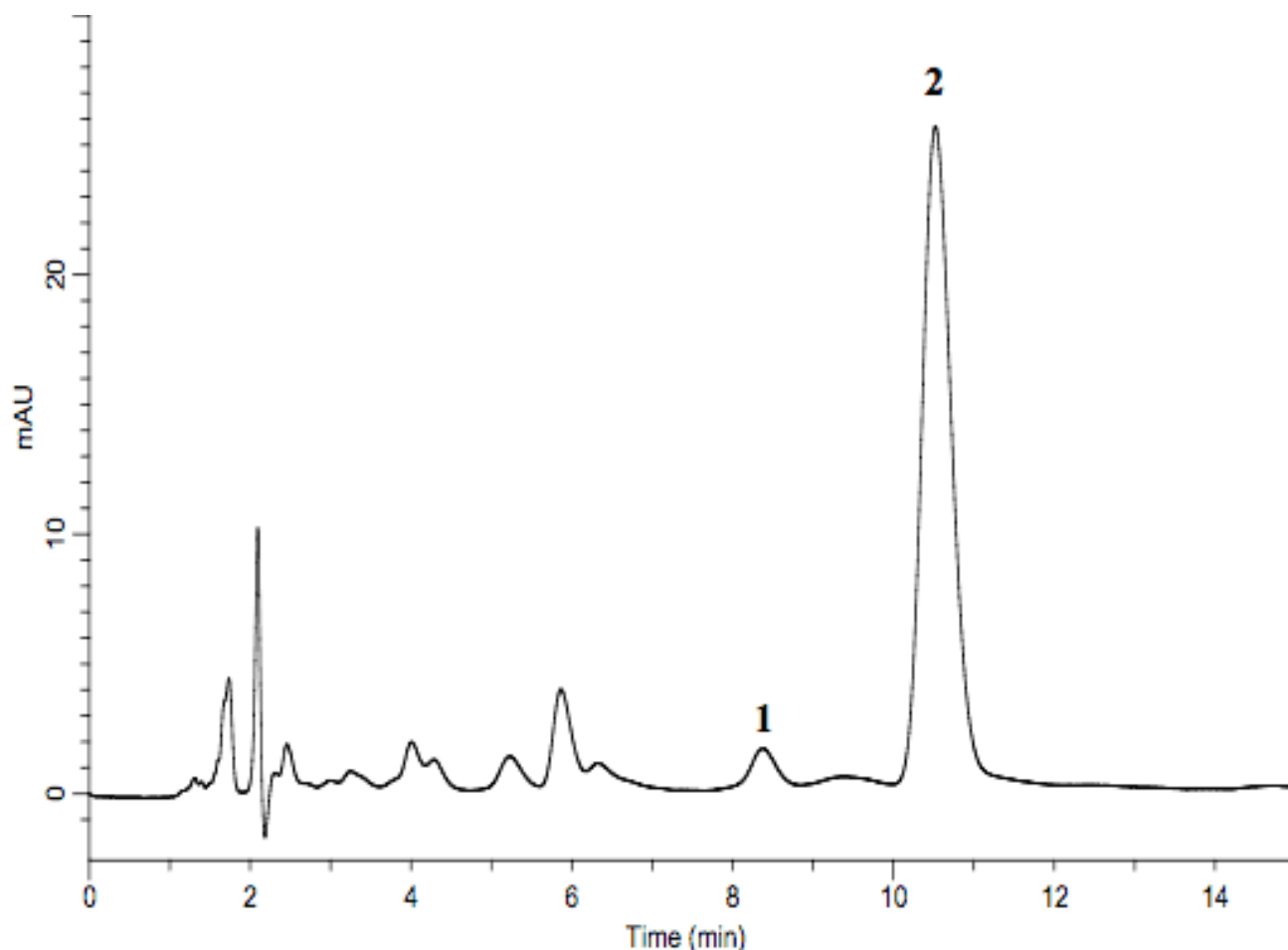


## Analysis of Paeoniae radix extract (Under the Condition of Japanese Pharmacopoeia)

Data No. LA553-0698



System :GL-7400 system

Column :Inertsil ODS-3 (5  $\mu$  m, 150 $\times$ 4.6 mm I.D.)

Column Cat. No.:

Eluent :A) CH<sub>3</sub>CN

B) H<sub>2</sub>O

C) H<sub>3</sub>PO<sub>4</sub>

A/B/C = 150/850/1 ,v/v/v

Flow rate :1.1 mL/min

Col. Temp. :20 °C

Detection :PDA 232 nm (GL-7452A PDA detector)

Injection Vol. :10  $\mu$  L

Sample :Paeoniae radix extract

Solutes : 1. Albiflorin

2. Paeoniflorin