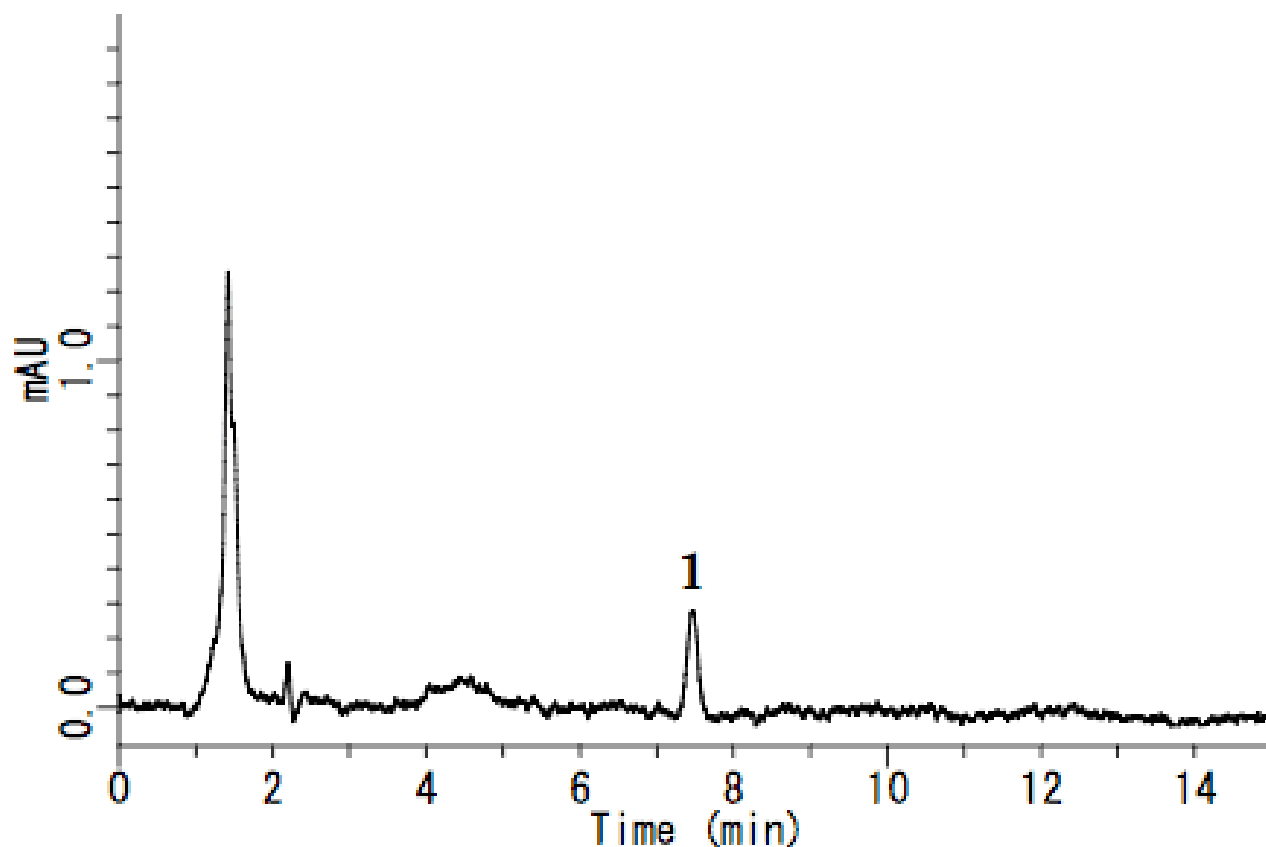


Analysis of Formaldehyde (Acetylacetone, NH₃ derivative)

Data No. LA575-0696



System : GL-7400 system
Column : Inertsil ODS-3 (4 μ m, 150 x 4.6 mm I.D.)
Column Cat. No. :
Eluent : A) CH₃CN
 B) H₂O
 A/B = 15/85 ,v/v
Flow rate : 1.0 mL/min
Col. Temp. : 40 °C
Detection : VIS 413 nm (GL-7451 UV-VIS Detector)
Injection Vol. : 10 μ L
Sample :

Solutes : 1. Formaldehyde [deriv.] (0.04 mg/L)