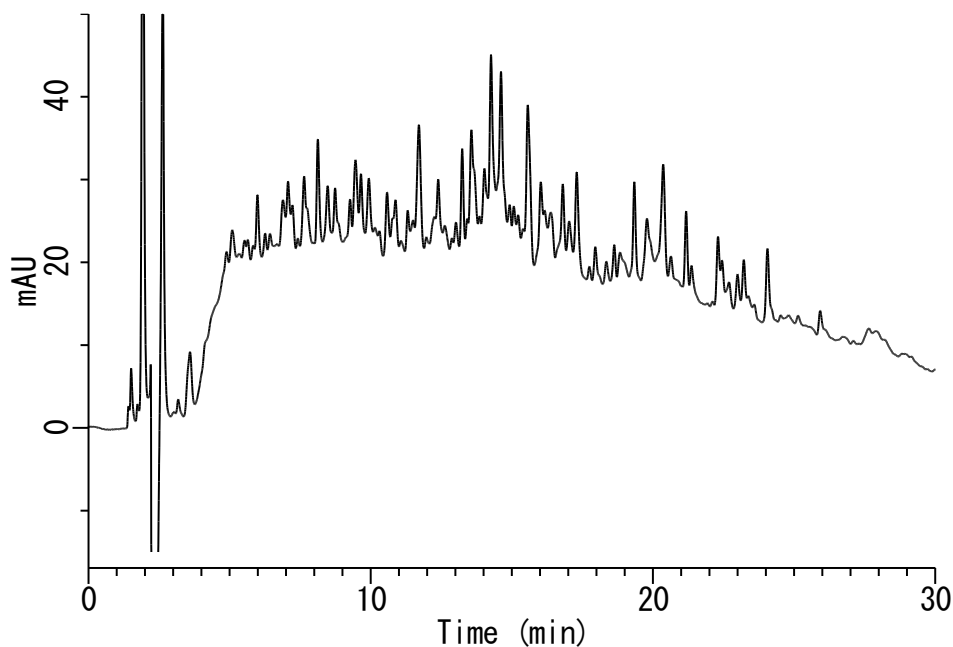


Analysis of Tryptic Digest of BSA



Conditions

System : GL-7400 HPLC system
Column : Inertsil ODS-4 (5 μ m, 150 x 4.6 mm I.D.)
Column Cat. No.: 5020-03945
Eluent : A) 0.08 % TFA in CH₃CN
 B) 0.1 % TFA
 A/B = 5/95 - 30 min - 95/5, v/v
Flow Rate : 1.0 mL/min
Col. Temp. : 40 °C
Injection Vol. : 20 μ L
Detection : UV 210 nm (GL-7450 UV detector)
Sample : Peptides

Analyte:

Tryptic Digest of BSA (500 mg/L)