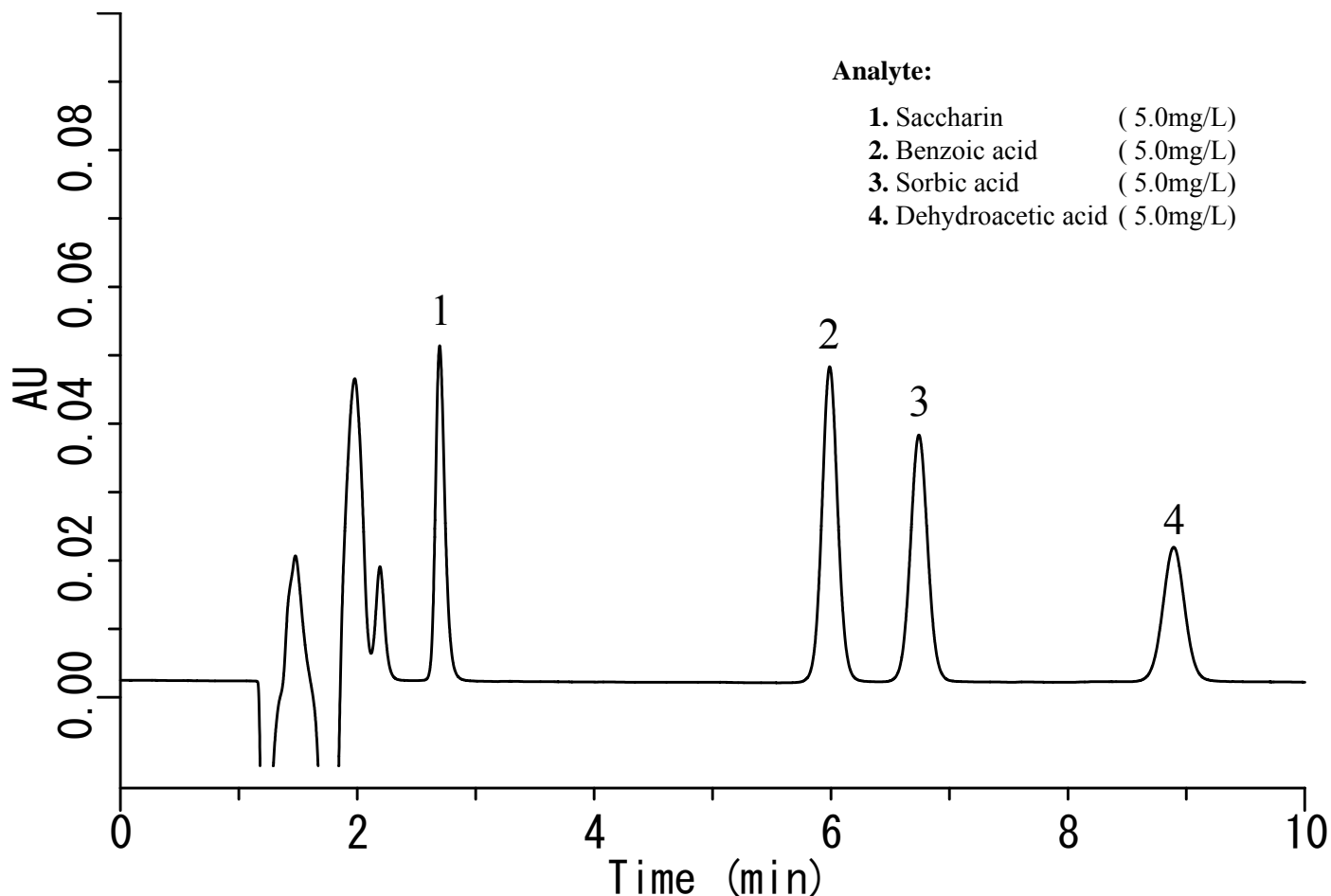


InertSearch™ for LC

Inertsil® Applications

Analysis of Chemical additives in food

Data No. LA625-0696



Conditions

System : LC-600 HPLC system
Column : Inertsil ODS-3 (5 µm, 150 x 4.6 mm I.D.)
Column Cat. No. : 5020-01731
Eluent : A) CH₃CN
B) CH₃OH
C) Citric acid Buffer
(0.7 g/L Citric Acid Monohydrate,
0.6 g/L Trisodium citrate dihydrate)
A/B/C = 2/1/7, v/v
Flow rate : 1.0 mL/min
Col. Temp. : 40 °C
Detection : UV 230nm (UV620 UV-VIS Detector)
Injection Vol. : 20 µL
Sample : Food additives