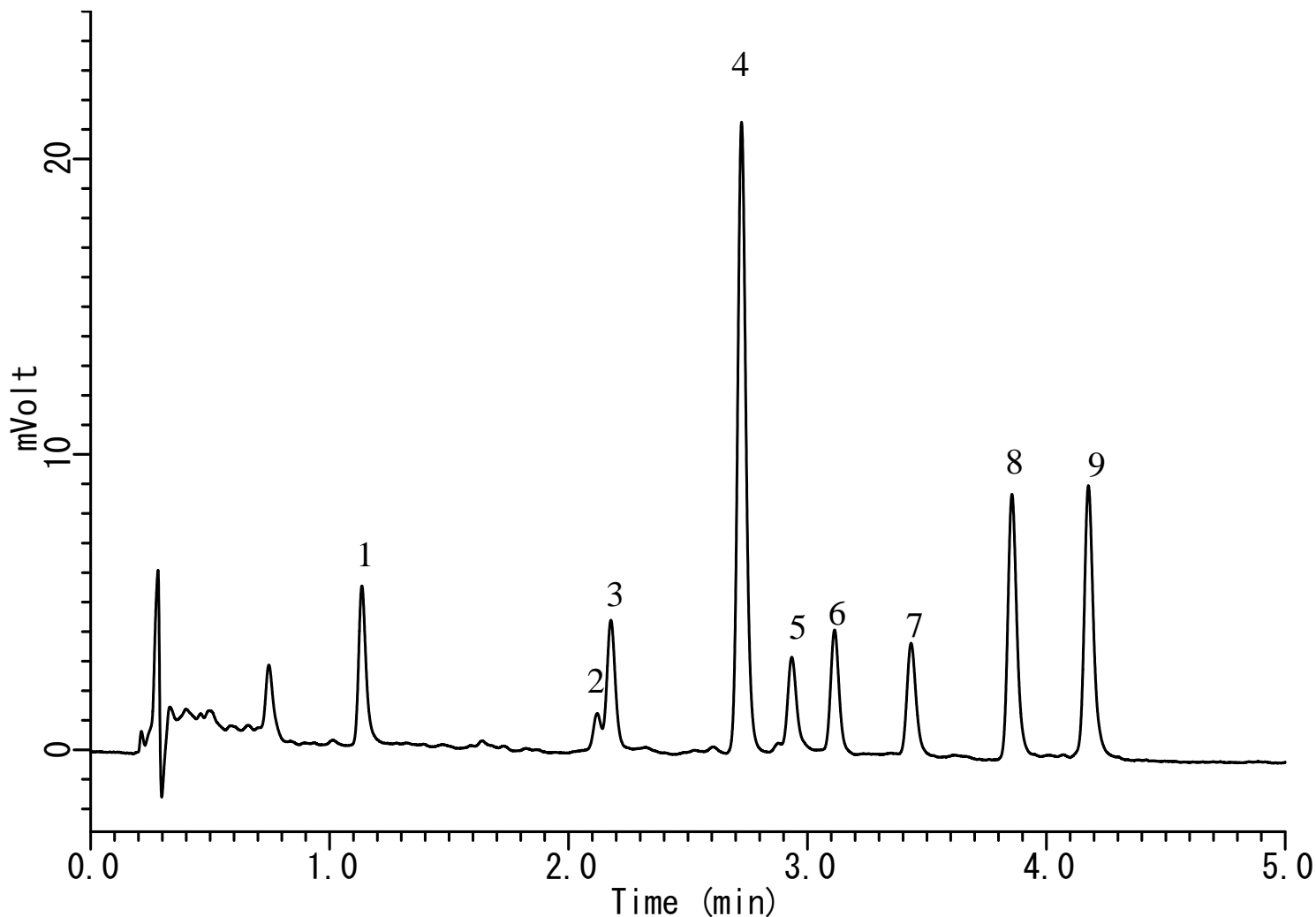


InertSearch™ for LC

Inertsil® Applications

Analysis of 9 catechins

Data No. LA655-0735



Conditions

System : LC800 HPLC system
Column : Inertsil ODS-3 (2 μ m, 50 x 2.1 mm I.D.)
Column Cat. No. : 5020-84652
Eluent : A) CH₃OH
B) 10mM NaH₂PO₄
A/B = 10/90 – 5 min – 50/50 – 0.1min
– 10/90 – 3.9min – 10/90, v/v
Flow rate : 0.5 mL/min
Col. Temp. : 40 °C
Detection : UV 280 nm (10 mm path length, UV Detector)
Injection Vol. : 5 μ L
Analyte : catechins

Analyte:

- | | | |
|----|--------------------------|-------------|
| 1. | Gallocatechin | (20 mg/L) |
| 2. | Epigallocatechin | (20 mg/L) |
| 3. | Catechin | (2.0 mg/L) |
| 4. | Caffeine | (2.0 mg/L) |
| 5. | Epigallocatechin gallate | (2.0 mg/L) |
| 6. | Epicatechin | (2.0 mg/L) |
| 7. | Gallocatechin gallate | (2.0 mg/L) |
| 8. | Epicatechin gallate | (2.0 mg/L) |
| 9. | Catechin Gallate | (2.0 mg/L) |