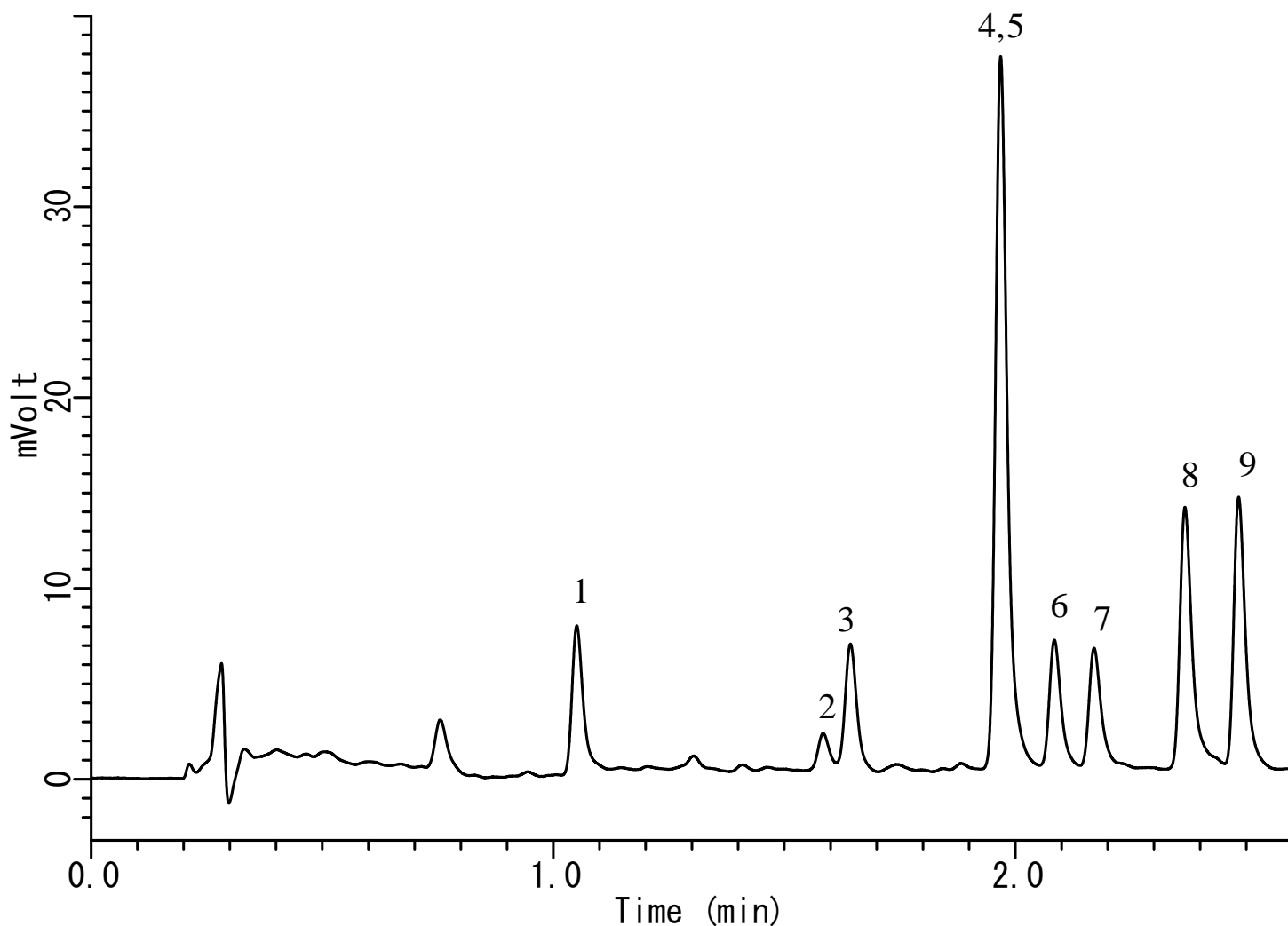


InertSearch™ for LC

Inertsil® Applications

Analysis of 9 catechins

Data No. LA661-0735



Conditions

System : LC800 HPLC system
Column : Inertsil ODS-3 (2 μ m, 50 x 2.1 mm I.D.)
Column Cat. No. : 5020-84652
Eluent : A) CH₃OH
B) 10mM NaH₂PO₄
A/B = 10/90 – 2 min – 50/50 – 0.1min
– 10/90 – 3.9min – 10/90, v/v
Flow rate : 0.5 mL/min
Col. Temp. : 40 °C
Detection : UV 280 nm (10 mm path length, UV Detector)
Injection Vol. : 5 μ L
Analyte : catechins

Analyte:

1.	Gallocatechin	(20 mg/L)
2.	Epigallocatechin	(20 mg/L)
3.	Catechin	(2.0 mg/L)
4.	Caffeine	(2.0 mg/L)
5.	Epigallocatechin gallate	(2.0 mg/L)
6.	Epicatechin	(2.0 mg/L)
7.	Gallocatechin gallate	(2.0 mg/L)
8.	Epicatechin gallate	(2.0 mg/L)
9.	Catechin Gallate	(2.0 mg/L)