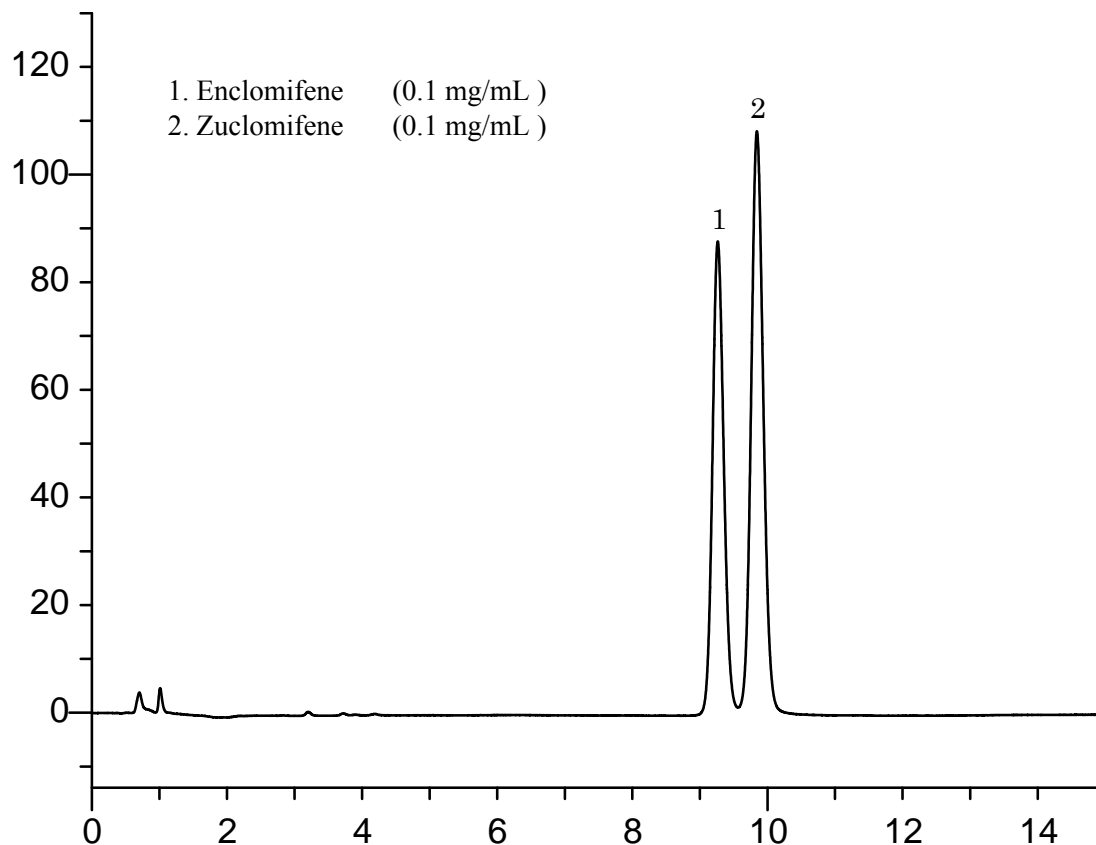


InertSearch™ for LC

Inertsil® Applications

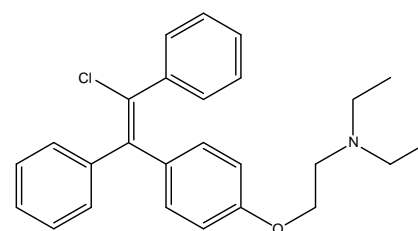
Analysis of Clomifene (1)

Data No. LA666-0142

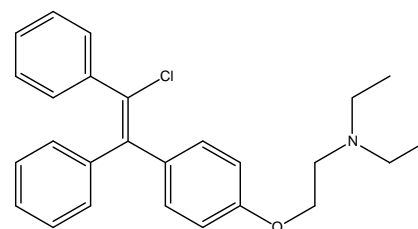


Conditions

System : GL-7400 HPLC system
Column : Inertsil ODS-3 (3 μm, 150 x 3.0 mm I.D.)
Column Cat. No. : 5020-04425
Eluent : A) CH₃CN
B) 1 % Diethyl amine in H₂O (pH 6.2, H₃PO₄)
A/B = 50/50, v/v
Flow Rate : 0.8 mL/min
Col. Temp. : 40 °C
Detection : UV 233 nm (GL-7450 UV Detector)
Injection Vol. : 5 μL
Sample : Clomifene citrate



1. Enclomifene



2. Zuclomifene