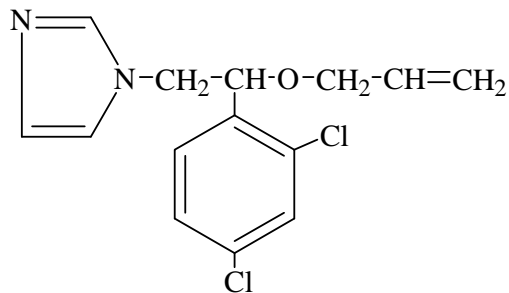
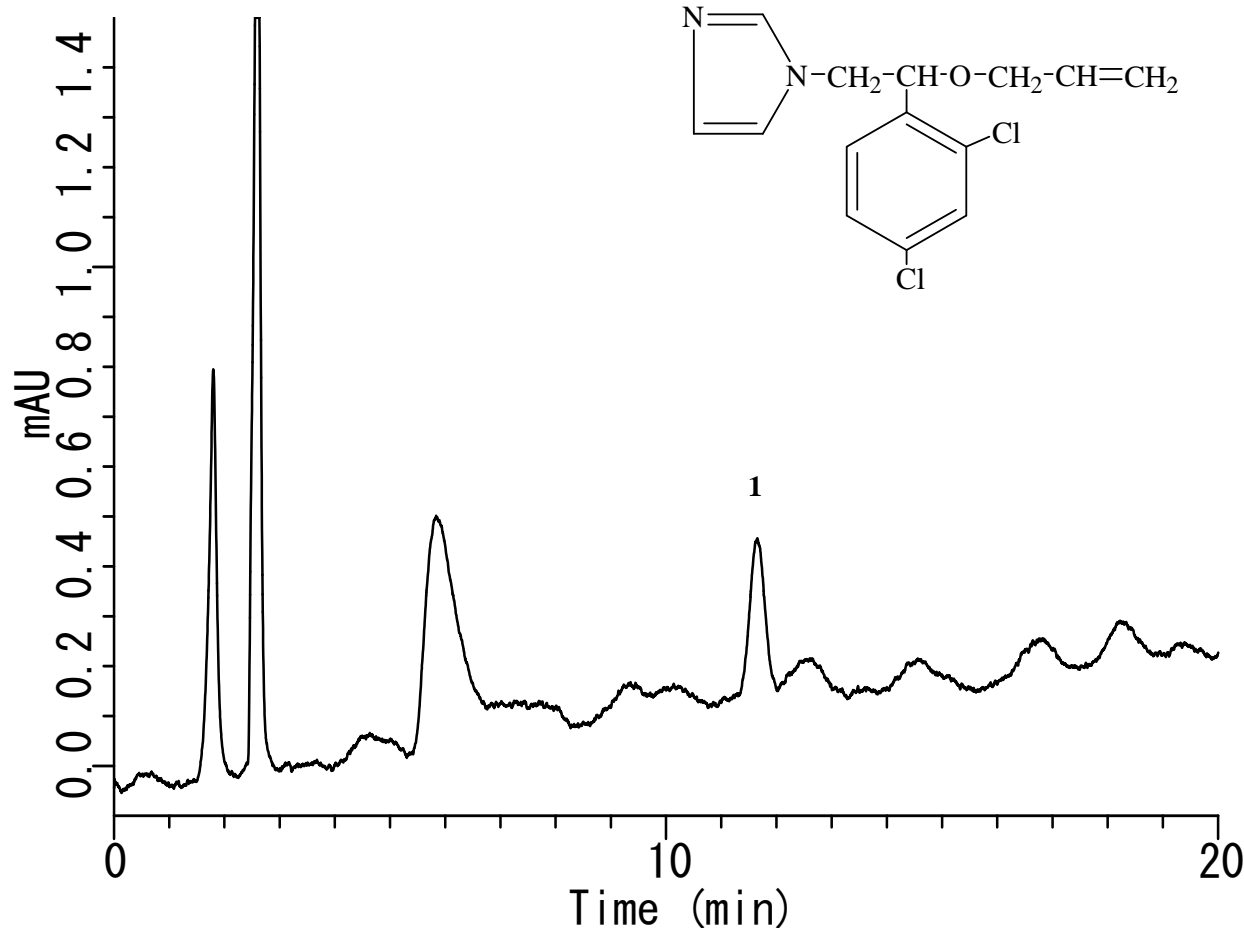


InertSearch™ for LC

Inertsil® Applications

Analysis of Pesticide

Data No. LA692-0696



Conditions

System : GL-7400 system
Column : Inertsil ODS-3 (5 μ m, 250 x 4.6 mm I.D.)
Column Cat. No. : 5020-01732
Eluent : A) CH₃OH
 : B) H₂O
 : A/B = 75/25, v/v
Flow Rate : 1.0 mL/min
Col. Temp. : 40 °C
Detection : UV 230 nm (GL-7450 UV Detector)
Injection Vol. : 10 μ L

Analyte

1. Imazalil (IMZ) (0.4 mg/L)
CV = 5.5% (N=5)

Structures are created using Chemistry 4-D Draw which is provided by ChemInnovation Software, Inc.