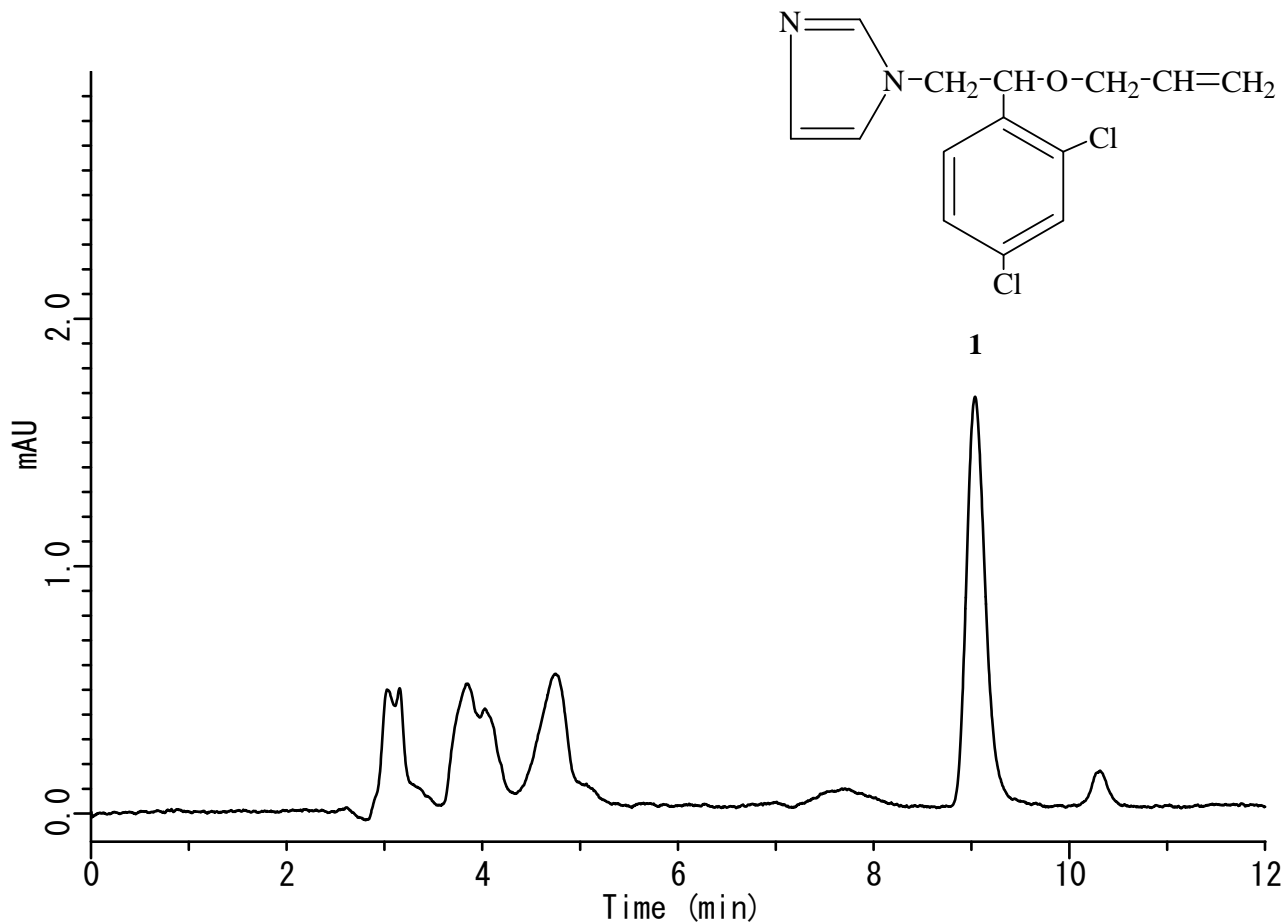


# InertSearch™ for LC

Inertsil® Applications

## Analysis of Pesticide

Data No. LA693-0696



### Conditions

**System** : GL-7400 system  
**Column** : Inertsil ODS-3 (5  $\mu$  m, 250 x 4.6 mm I.D.)  
**Column Cat. No.** : 5020-01732  
**Eluent** : A) CH<sub>3</sub>CN  
B) 10 mM KH<sub>2</sub>PO<sub>4</sub>  
A/B = 70/30, v/v  
**Flow Rate** : 0.7 mL/min  
**Col. Temp.** : 40 °C  
**Detection** : UV 230 nm (GL-7450 UV Detector)  
**Injection Vol.** : 10  $\mu$  L

### Analyte

1. Imazalil (IMZ) (5.0 mg/L)