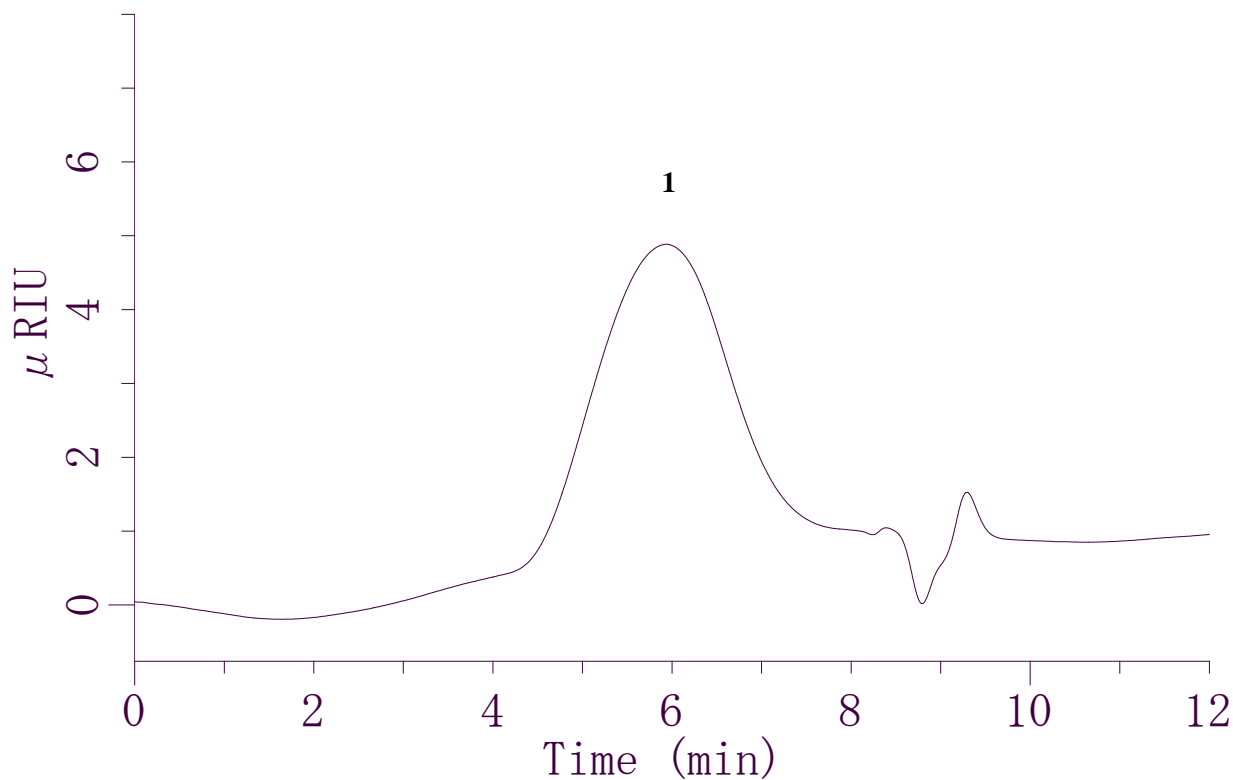


# InertSearch™ for LC

Inertsil® Applications

## Analysis of Cyanopropyl methyl-Dimethyl silicone

Data No. LA696-0734



### Conditions

**System** : GL7400 HPLC system  
**Column** : Inertsil WP300 Diol (5μm, 250 x 7.6 mm I.D.)  
**Column Cat. No.** : 5020-05988  
**Eluent** : THF  
**Flow Rate** : 1.0 mL/min  
**Col. Temp.** : 40°C  
**Detection** : RI (GL-7454 RI Detector) (Cell Temp. 35°C)  
**Injection Vol.** : 50μL

### Analyte

1. Cyanopropyl methyl-Dimethyl silicone