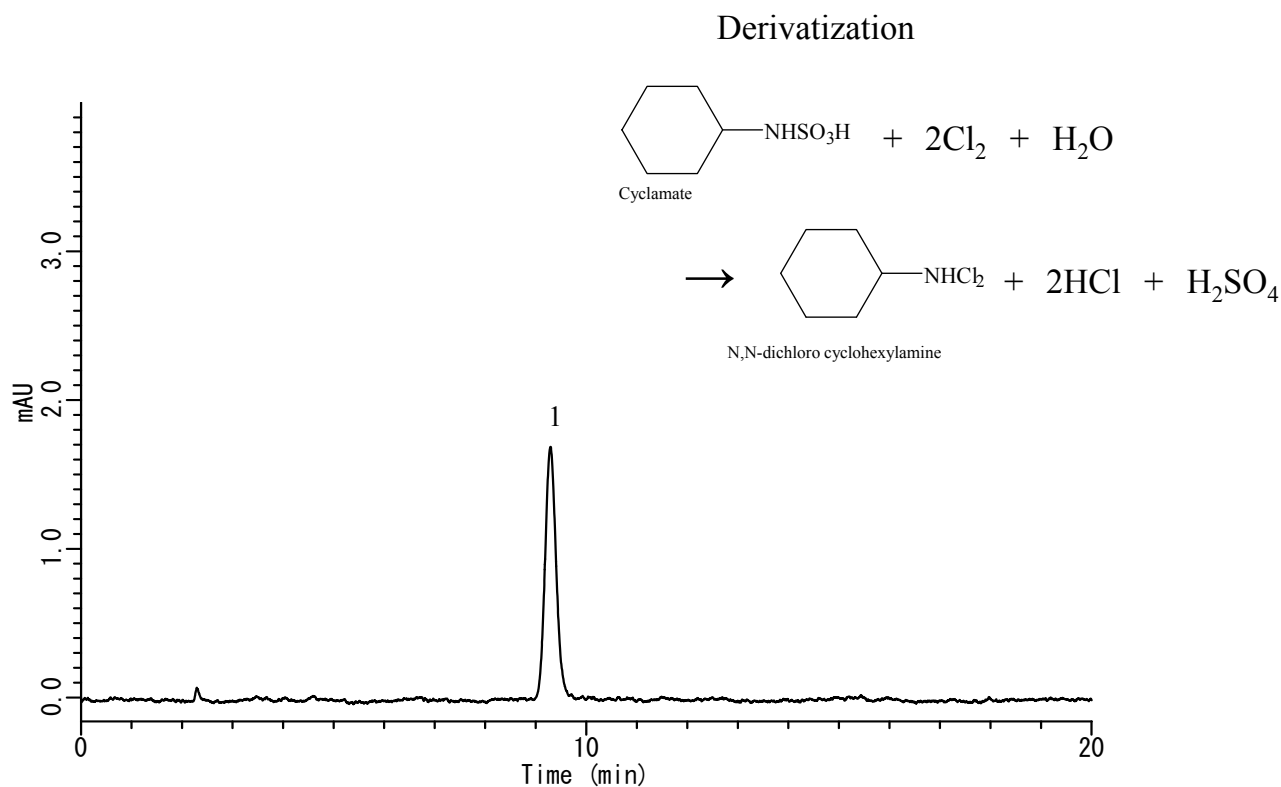


## Analysis of Cyclamate with pre-column derivatization

Data No. LA723-0811



### Conditions

**System** : GL-7400HPLC system  
**Column** : Inertsil ODS-3 (5μm, 150 x 4.6 mm I.D.)  
**Column Cat. No.** : 5020-01731  
**Eluent** : A) CH<sub>3</sub>CN  
          : B) H<sub>2</sub>O  
          : A/B = 70/30, v/v  
**Flow Rate** : 1.0 mL/min  
**Col. Temp.** : 40 °C  
**Detection** : UV 314 nm (GL-7450 UV detector)  
**Injection Vol.** : 10 μL

### Analyte

1. N,N-dichloro cyclohexylamine (10 mg/L)