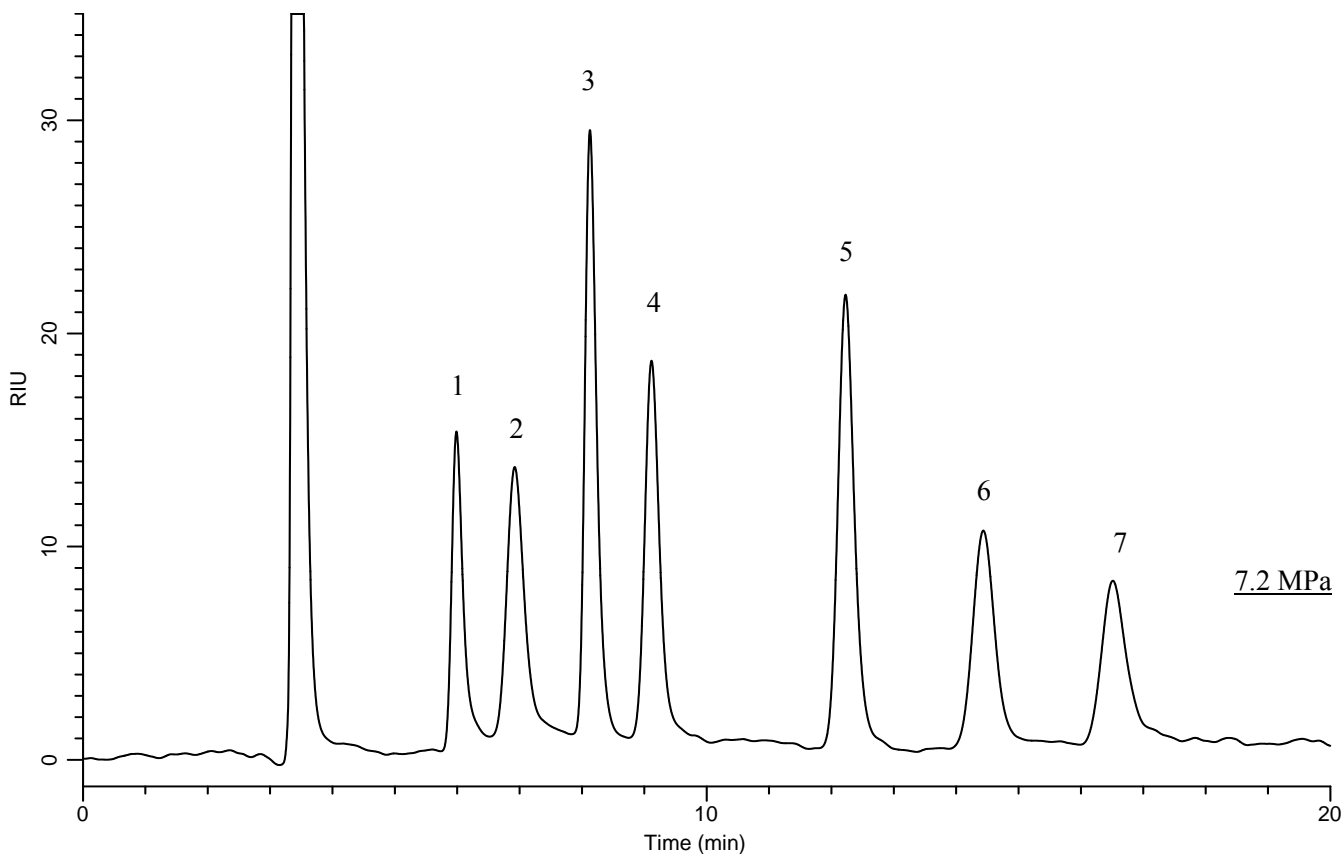


# InertSearch™ for LC

Inertsil® Applications

## Analysis of Sugars

Data No. LA728-0811



### Conditions

**System** : GL-7400HPLC system  
**Column** : Inertsil NH2 (3µm, 250 x 3.0 mm I.D.)  
**Column Cat. No.** : 5020-05476  
**Eluent** : A) CH<sub>3</sub>CN  
          : B) H<sub>2</sub>O  
          : A/B = 75/25, v/v  
**Flow Rate** : 0.4 mL/min  
**Col. Temp.** : 40 °C  
**Detection** : RI (40°C, Positive) (GL-7454 RI detector)  
**Injection Vol.** : 10 µL

### Analyte

1. Rhamnose	(2000 mg/L)
2. Fucose	(2000 mg/L)
3. Fructose	(2000 mg/L)
4. Glucose	(2000 mg/L)
5. Sucrose	(2000 mg/L)
6. Maltose	(2000 mg/L)
7. Lactose	(2000 mg/L)