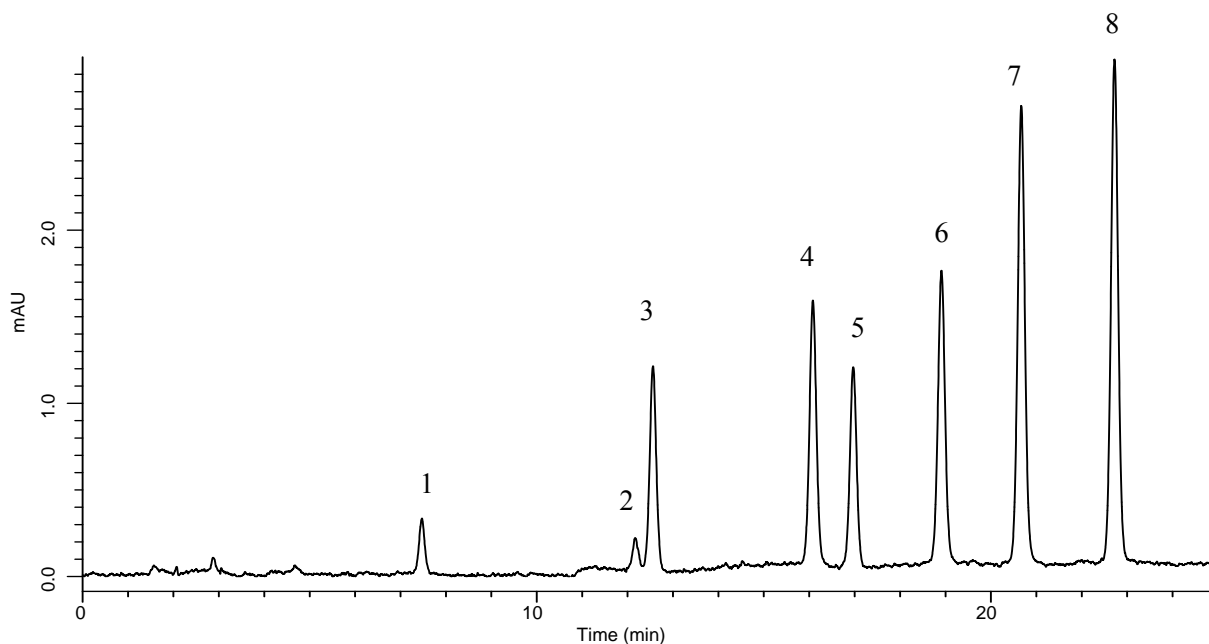


InertSearch™ for LC

Inertsil® Applications

Analysis of Catechin

Data No. LA744-0754



Conditions

System : GL-7400HPLC system
Column : Inertsil ODS-3 (5µm, 150 x 4.6 mm I.D.)
Column Cat. No. : 5020-01731
Eluent : A) CH₃OH
B) 10 mM NaH₂PO₄
A/B = 10/90 - 30 min - 50/50, v/v
Flow Rate : 1.0 mL/min
Col. Temp. : 40 °C
Detection : UV 280 nm (GL-7450 UV Detector)
Injection Vol. : 10µL

Analyte

1. Galocatechin (GC)	(2.0 mg/L)
2. Epigallocatechin (EGC)	(2.0 mg/L)
3. Catechin (C)	(2.0 mg/L)
4. Epigallocatechin Gallate (EGCg)	(2.0 mg/L)
5. Epicatechin (EC)	(2.0 mg/L)
6. Galocatechin Gallate (GCg)	(2.0 mg/L)
7. Epicatechin Gallate (Ecg)	(2.0 mg/L)
8. Catechin Gallate (Cg)	(2.0 mg/L)