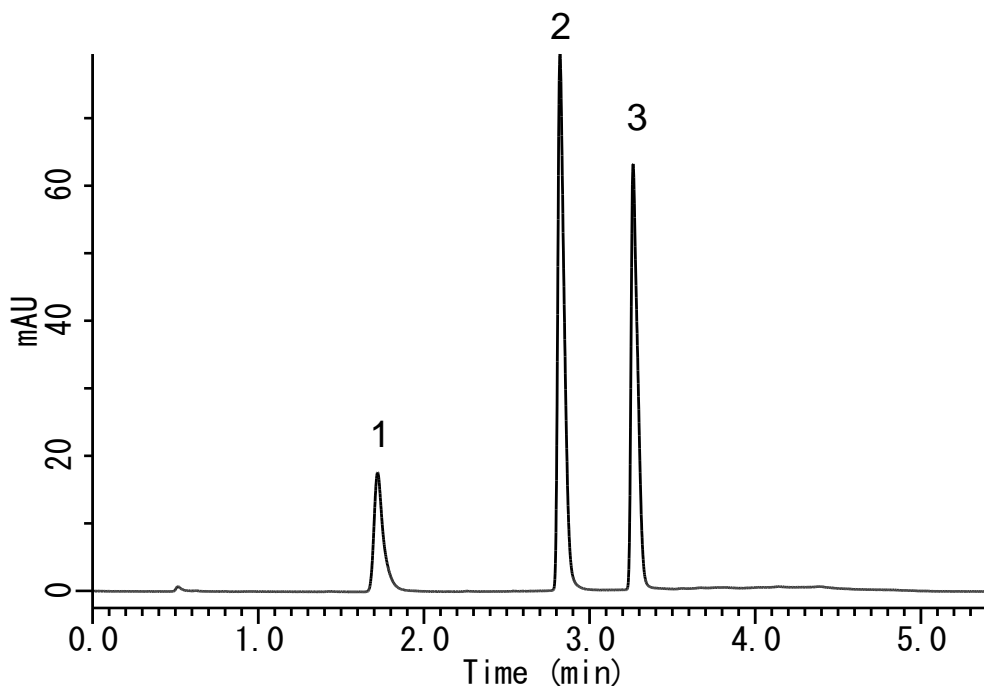


## Analysis of Indomethacine



### Conditions

**System** : GL-7400 HPLC System  
**Column** : MonoClad C18-HS (100 x 3.0 mm I.D.)  
**Column Cat. No.** : 5020-10802  
**Eluent** : A) CH<sub>3</sub>CN  
          : B) 0.1 % H<sub>3</sub>PO<sub>4</sub> in H<sub>2</sub>O  
          : A/B = 30/70 - 3 min - 80/20, v/v  
**Flow Rate** : 1.2 mL/min  
**Col. Temp.** : UV 254 nm (GL-7450 UV Detector)  
**Detection** : 40 °C  
**Injection Vol.** : 2 µL

### Analyte

1. *p*-Chlorobenzoic acid (0.2 mg/mL)  
2. *p*-Hydroxybenzoic acid (0.8 mg/mL)  
3. Indomethacine (0.5 mg/mL)