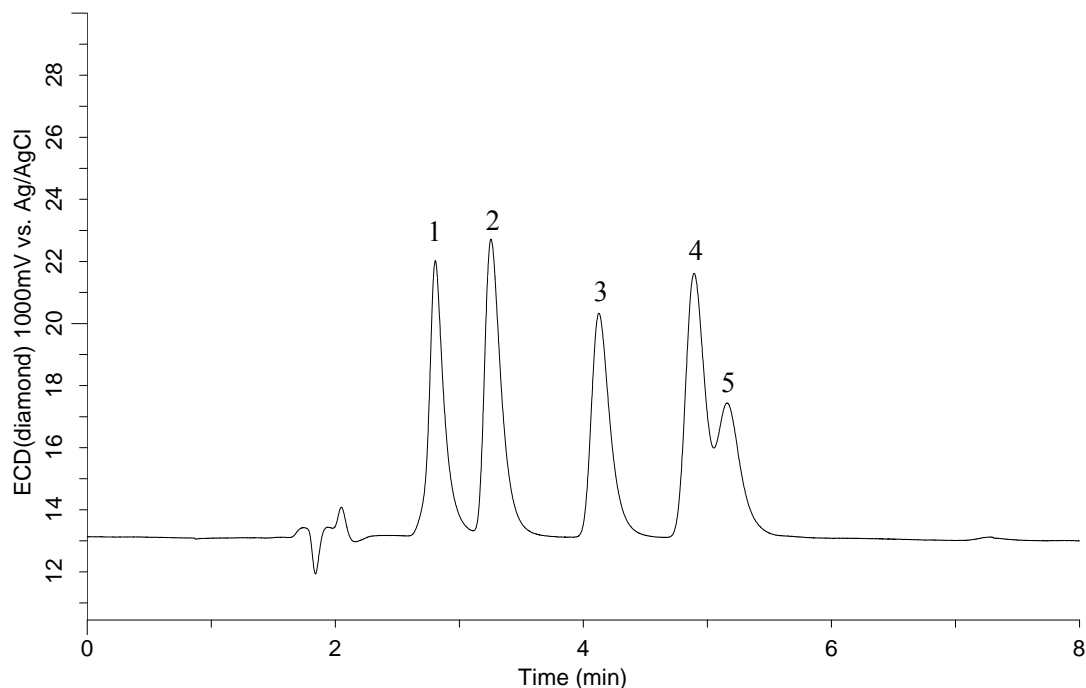


InertSearch™ for LC

Inertsil® Applications

Analysis of Catechin by HPLC-ECD

Data No. LA883-0142



Conditions

System : GL-7400 HPLC system
Column : Inertsil ODS-3 (5 μ m, 150 x 4.6 mm I.D.)
Column Cat. No. : 5020-01731
Eluent : A) CH₃CN
 : B) 40 mM phosphate buffer (pH 2.2)
 : A/B = 15/85, v/v
Flow rate : 1.0 mL/min
Col. Temp. : 40 °C
Detection : ECD 1000 mV vs Ag/AgCl (ED703 EC Detector, Diamond)
Sample : Standard

Analyte :

1. Gallic acid (200 ng/mL)
2. Epigallocatechin (EGC) (200 ng/mL)
3. Catechin (C) (200 ng/mL)
4. Epicatechin (EC) (200 ng/mL)
5. Epigallocatechingallate (EGCg) (200 ng/mL)