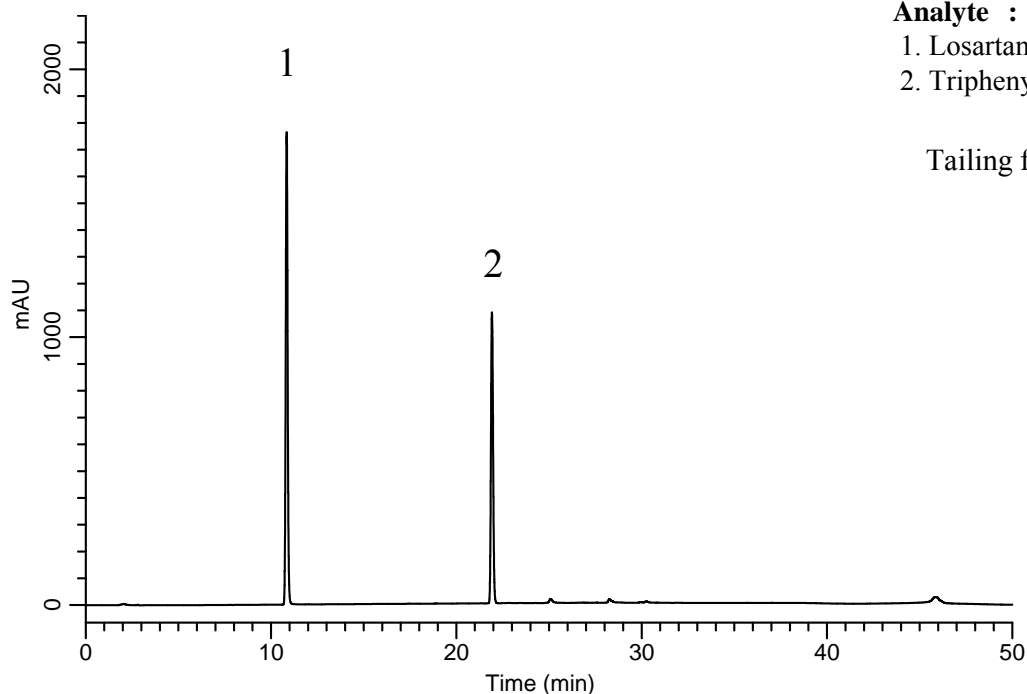


InertSearch™ for LC

Inertsil® Applications

Analysis of Losartan Potassium (Inertsil ODS-3)

Data No. LA936-811



Analyte :

1. Losartan Potassium (300 mg/L)
2. Triphenylmethanol (300 mg/L)

Tailing factor of 1 : 1.1

Conditions

System : GL-7400 HPLC system
Column : Inertsil ODS-3 (5 μ m, 250 x 4.0 mm I.D.)
Column Cat. No. : 5020-01762
Eluent : A) CH₃CN
B) 0.1% H₃PO₄
A/B = 25/75 -25 min- 90/10 -10 min- 90/10 -10 min- 25/75
-5 min- 25/75 ,v/v (Total 50 min)
Flow Rate : 1.0 mL/min
Col. Temp. : 35 °C
Detection : UV 220 nm (GL-7450 UV Detector)
Injection Vol. : 10 μ L
Sampe : Standard