

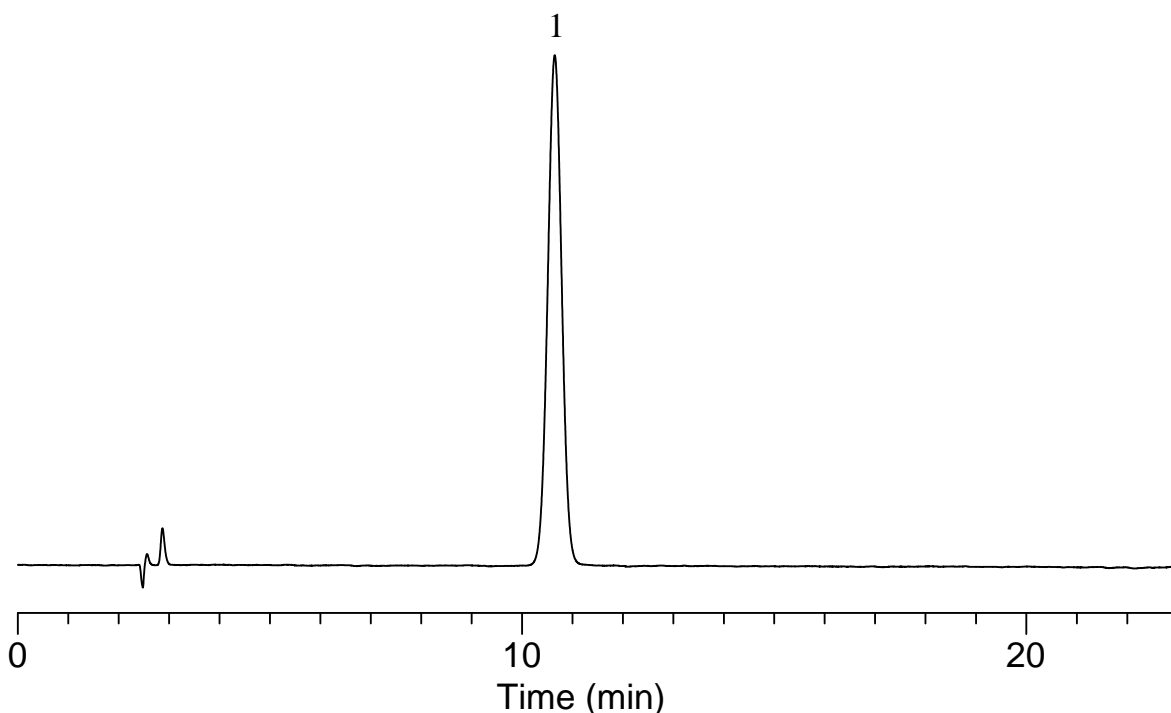
# InertSearch™ for LC

Inertsil® Applications

## Analysis of Edaravone

(Under the Condition of Japanese Pharmacopoeia)

Data No. LB095-0848



### Conditions

**System** : LC800 HPLC system  
**Column** : Inertsil WP300 C18 (5  $\mu$  m, 150 x 4.6 mm I.D.)  
**Column Cat. No.** : 5020-05845  
**Eluent** : A) CH<sub>3</sub>OH  
B) 0.1% CH<sub>3</sub>COOH  
A/B = 100/300, v/v (pH 5.5, 1.4 % NH<sub>3</sub>(aq))  
**Flow Rate** : 0.75 mL/min  
**Col. Temp.** : 40 °C  
**Detection** : UV 240 nm  
**Injection Vol.** : 10  $\mu$  L

### Analyte :

1. Edaravone

Theoretical plates : 6,920 ( $\geq$  2,000)  
Tailing factor : 1.01 ( $\leq$  1.4)