

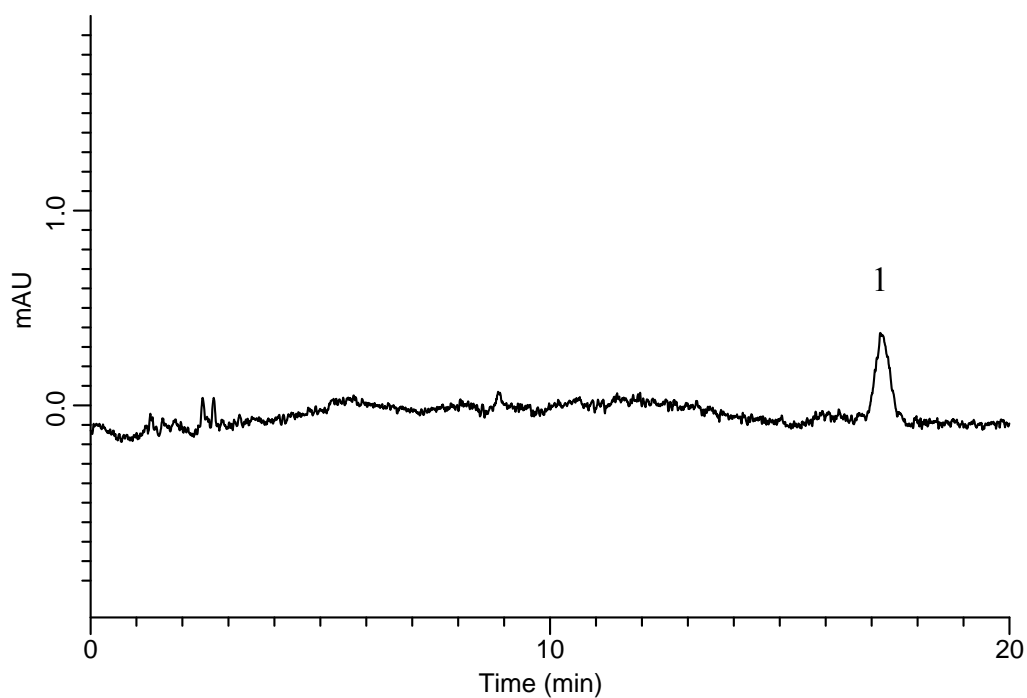
InertSearch™ for LC

Inertsil® Applications

Analysis of Glimepiride

(Under the Condition of Japanese Pharmacopoeia)

Data No. LB119-0894



Conditions

System : GL-7400 HPLC system
Column : Inertsil ODS-3
(4 μ m, 250 x 4.0 mm I.D.)
Column Cat. No. : 5020-04636
Eluent : A) CH₃CN
B) 1.0 g/L NaH₂PO₄·2H₂O (pH 2.5, H₃PO₄)
A/B = 50/50, v/v
Flow Rate : 1.15 mL/min
Col. Temp. : 25 °C
Detection : UV 228 nm (GL-7452A PDA Detector)
Injection Vol. : 20 μ L

Analyte:

1. Glimepiride 200 μ g/L
Theoretical plates : 13,782 (\geq 9,000)
Tailing factor : 1.18 (\leq 1.5)
RSD of the
peak area (%) (n=6) : 1.66 (\leq 2.0)