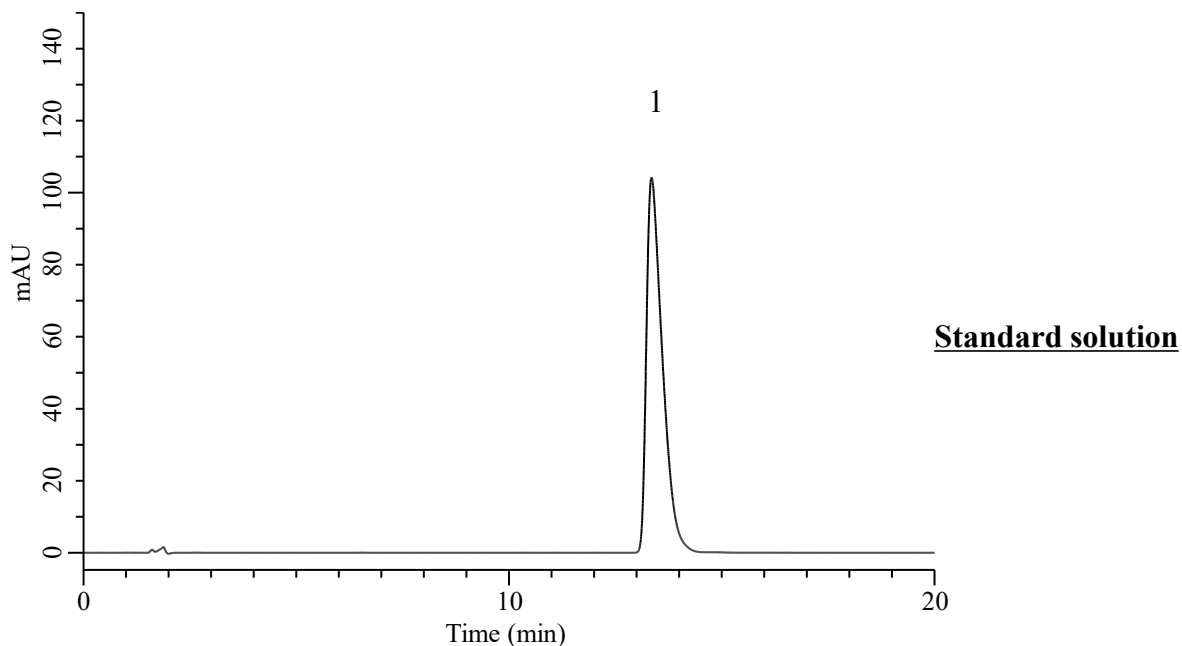


Analysis of Risperidone

(Under the Condition of Japanese Pharmacopoeia 19th,
Risperidone Tablets, Risperidone Fine Granules, Assay)



Conditions

System : Chromaster PLUS (HITACHI)
Column : Inertsil WP300 C18 (GL Sciences Inc.)
 (3.5 μ m, 150 x 3.0 mm I.D.)
Column Cat. No. : 5020-87034
Eluent : Solution*
Flow Rate : 0.55 mL/min
Col. Temp. : 25 $^{\circ}$ C
Detection : UV 275 nm (Chromaster 5420 UV-VIS)
Injection Vol. : 10 μ L
Sample : Standard in (0.1mol/L in H₂O/CH₃OH=3/2, v/v)

Analyte:

1. Risperidone 100 μ g/mL

 Theoretical plates number : 6208 (\cong 4000)

 Tailing factor : 1.85 (\cong 2.5)

 RSD of
 the peak area (%) (n=6) : 0.12 (\cong 1.0)

*: To 1000 mL of a mixture of water and acetonitrile (4:1) add 1.5 mL of trifluoroacetic acid, and adjust to pH 3.0 with ammonia solution (28).