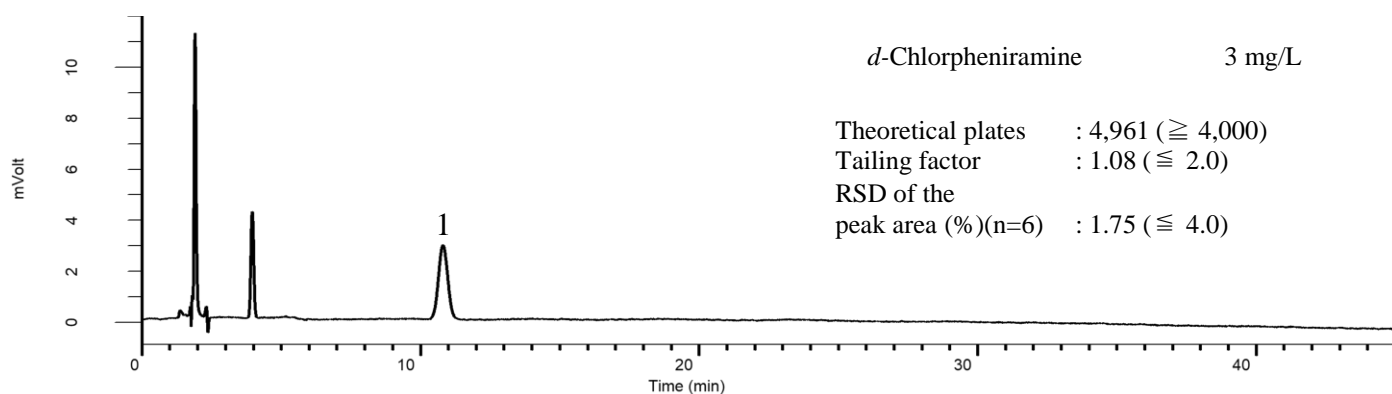
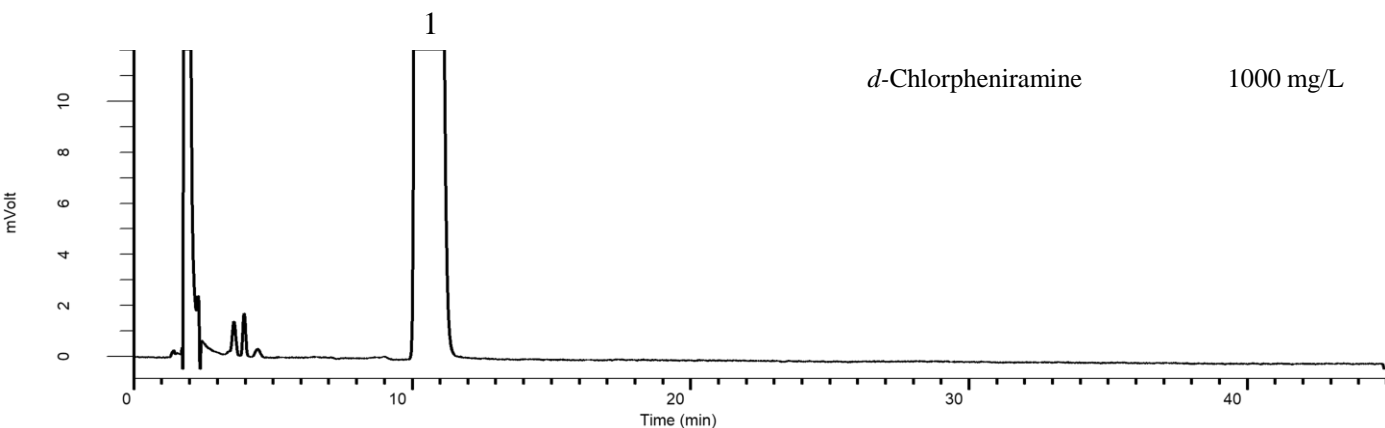


## Analysis of *d*-Chlorpheniramine maleate

(Under the Condition of the Japanese Pharmacopoeia)



### Conditions

**System** : GL-7400 HPLC system  
**Column** : Inertsil ODS-3  
 (10  $\mu$  m, 300 x 3.9 mm I.D.)  
**Column Cat. No.** : 5020-87016  
**Eluent** : A) CH<sub>3</sub>CN  
 B) 74.5 mM NH<sub>4</sub>H<sub>2</sub>PO<sub>4</sub> + 0.1% H<sub>3</sub>PO<sub>4</sub> in H<sub>2</sub>O  
 A/B = 200/800, v/v  
**Flow Rate** : 1.4 mL/min  
**Col. Temp.** : 25 °C  
**Detection** : UV 225 nm (GL-7452 PDA Detector)  
**Injection Vol.** : 20  $\mu$  L  
**Sample** : Standard

### Analyte:

1. *d*-Chlorpheniramine