

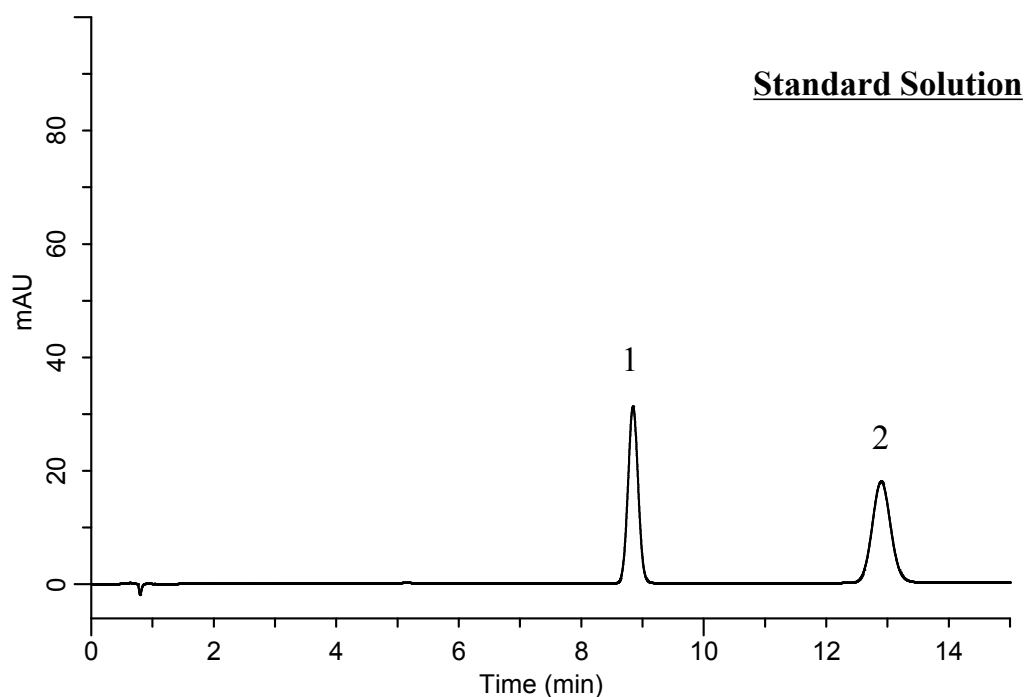
# InertSearch™ for LC

Inertsil® Applications

## Analysis of Candesartan cilexetil

(Under the Condition of the Japanese Pharmacopoeia,  
Candesartan cilexetil and Hydrochlorothiazide Tablets)

Data No. LB304-0894



### Conditions

**System** : GL7700 HPLC system  
**Column** : Inertsil ODS-3  
(4  $\mu$  m, 150 x 4.0 mm I.D.)  
**Column Cat. No.** : 5020-04635  
**Eluent** : A) CH<sub>3</sub>CN  
B) H<sub>2</sub>O  
C) CH<sub>3</sub>COOH  
A/B/C = 57/43/1, v/v/v  
**Flow Rate** : 1.65 mL/min  
**Col. Temp.** : 25 °C  
**Detection** : UV 254 nm (UV7750 UV Detector)  
**Injection Vol.** : 10  $\mu$  L  
**Sample** : Standard

### Analyte:

1. Hydrochlorothiazide 125 mg/L  
2. Candesartan cilexetil 40 mg/L

Resolution (1, 2) : 9.4 ( $\geq 5$ )  
RSD of the peak  
area ratio of  
1 to 2 (%) (n=6) : 0.35 ( $\leq 1.0$ )