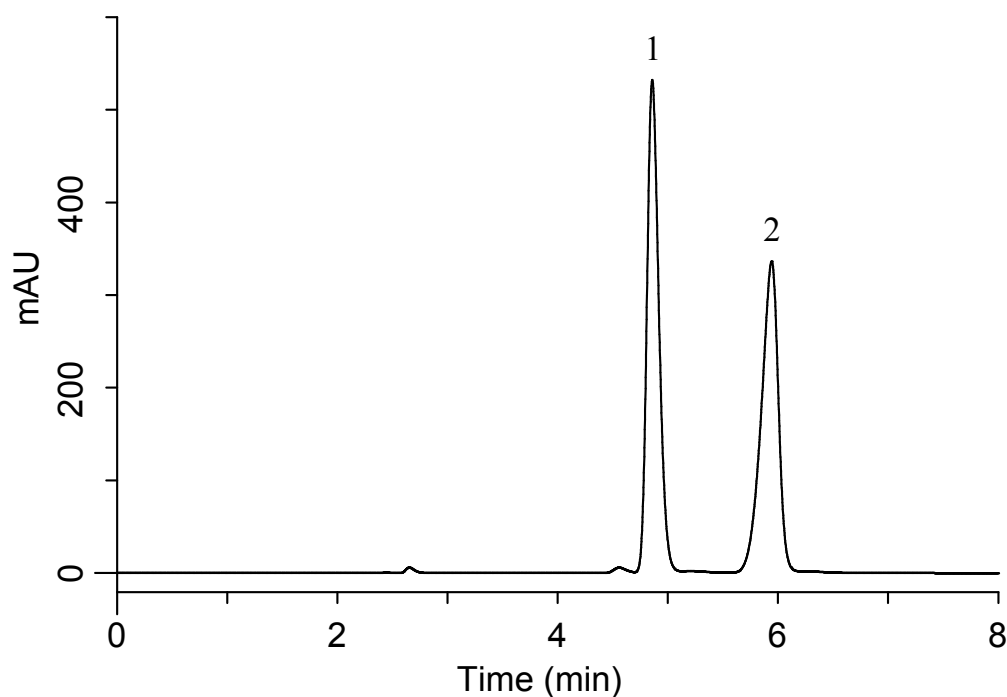


Analysis of Phenylephrine Hydrochloride

(Under the Condition of USP 39-NF34, Phenylephrine Hydrochloride Injection)

Data No. LB461-0919



Conditions

System : GL7700 HPLC system
Column : InertSustain C18
(5 μ m, 250 x 4.6 mm I.D.)
Column Cat. No. : 5020-07346
Eluent : 1.1 g/L 1-Octanesulfonate in (CH₃OH/H₂O = 50/50, v/v)
(pH 3.0, 3M H₃PO₄ in H₂O)
Flow Rate : 1.0 mL/min
Col. Temp. : 40 °C
Detection : UV 280 nm (PD7752 PDA Detector)
Injection Vol. : 20 μ L
Sample : Standard

Analyte:

1. Epinephrine bitartrate 0.4 mg/mL
2. Phenylephrine hydrochloride 0.4 mg/mL

Resolution (1, 2) : 4.43 (\geq 1.0)
RSD of the 2 area (%) (n=5) : 0.02 (\leq 2.0)