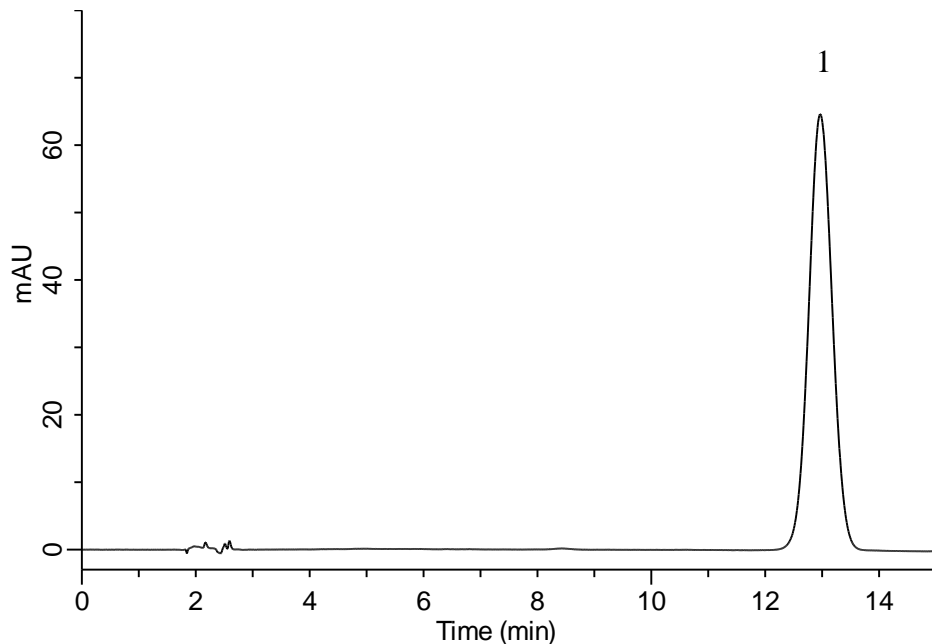


## Analysis of Clomipramine Hydrochloride

(Under the Condition of the Japanese Pharmacopoeia, Clomipramine Hydrochloride Tablets)

Data No. LB486-0894



### Conditions

**System** : GL7700 HPLC system  
**Column** : Inertsil ODS-3  
(10  $\mu$  m, 250 x 4.6 mm I.D.)  
**Column Cat. No.** : 5020-01632  
**Eluent** : Solution\*  
**Flow Rate** : 1.22 mL/min  
**Col. Temp.** : 25 °C  
**Detection** : UV 254 nm (PD7752 PDA Detector)  
**Injection Vol.** : 20  $\mu$  L  
**Sample** : Standard

### Analyte:

1. Clomipramine Hydrochloride 100 mg/L  
Theoretical plate number : 4,620 ( $\geq$  3,000)  
Tailing factor : 1.03 ( $\leq$  1.5)  
RSD of the area (%) (n = 6) : 0.06 ( $\leq$  1.0)

\*Dissolve 2 g of sodium 1-octanesulfonate in 300 mL of water, and add 450 mL of methanol, 250 mL of acetonitrile and 1 mL of 0.5 mol/L sulfuric acid TS.