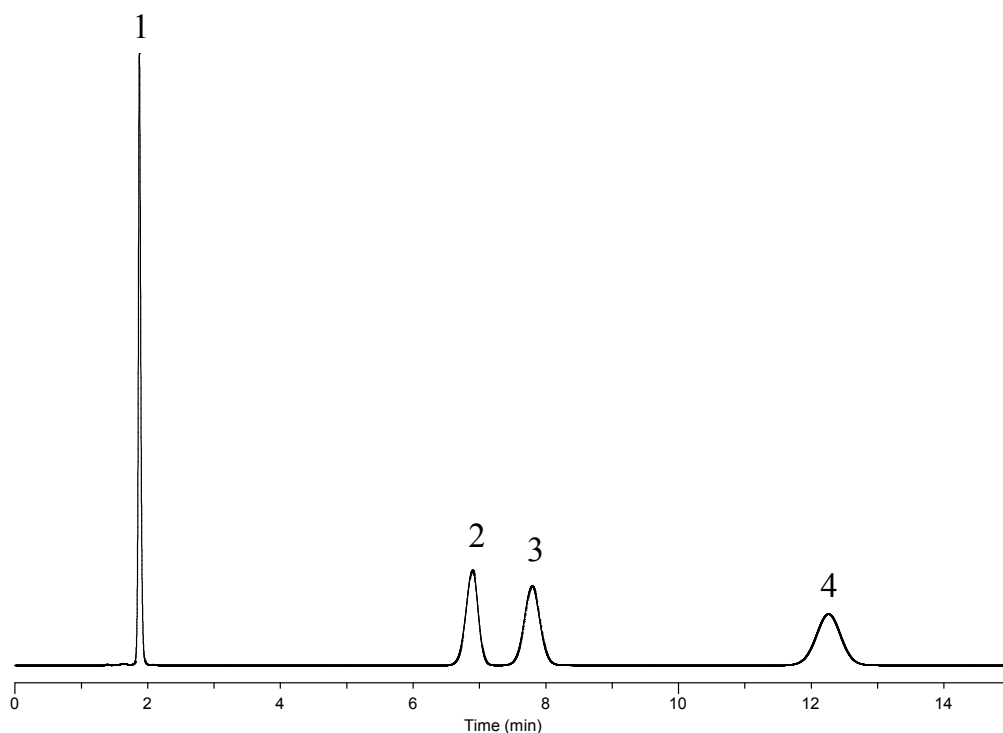


### Analysis of Tryptophan metabolites

Data No. LB493-806



#### Conditions

**Column** : InertSustain Amide  
(5  $\mu$  m, 150 x 2.1 mm I.D.)  
**Column Cat. No.** : 5020-88607  
**Eluent** : A) CH<sub>3</sub>CN  
B) 10 mM HCOONH<sub>4</sub> in H<sub>2</sub>O  
C) HCOOH  
A/B = 80/20/0.1, v/v  
**Flow Rate** : 0.2 mL/min  
**Col. Temp.** : 40 °C  
**Detection** : UV 280 nm  
**Injection Vol.** : 2.5  $\mu$  L  
**Sample** : Standard

#### Analyte:

1. 5-Hydroxyindoleacetic acid  
2. Serotonin  
3. Tryptophan  
4. 5-Hydroxy-L-Tryptophan  
(100 mg/L each)