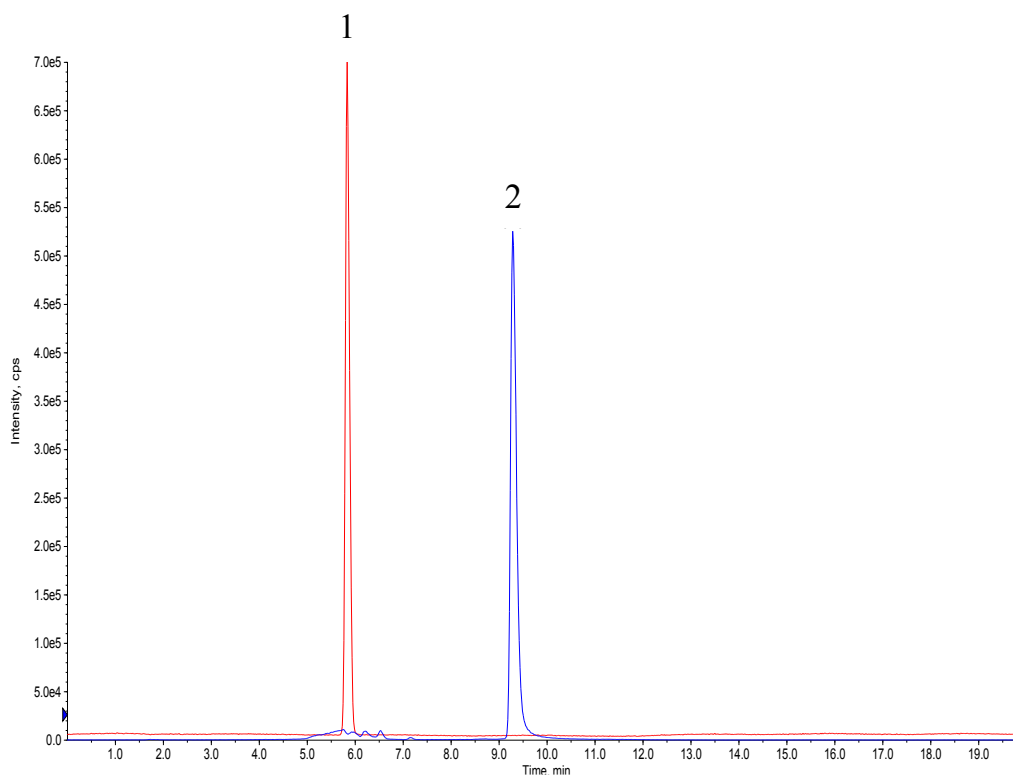


### Analysis of Tyramine and Histamine

Data No. LB495-812



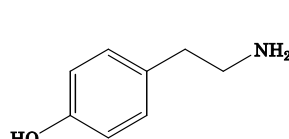
#### Conditions

**Column** : InertSustain Amide  
(3 μm, 150 x 2.1 mm I.D.)  
**Column Cat. No.** : 5020-88731  
**Eluent** : A) 0.1 % HCOOH in CH<sub>3</sub>CN  
B) 0.1 % HCOOH, 20 mM HCOONH<sub>4</sub> in H<sub>2</sub>O

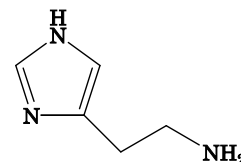
Time (min)	A (%)	B (%)
0.00	95	5
10.0	50	50
10.1	95	5
15.1	95	5

#### Analyte:

1. Tyramine  
2. Histamine  
(100 ng/mL each)



1. Tyramine



2. Histamine

**Flow Rate** : 0.3 mL/min  
**Col. Temp.** : 40 °C  
**Detection** : LC/MS/MS (4000Q TRAP®, ESI, Positive, SRM)  
**Injection Vol.** : 5 μL  
**Sample** : Standard