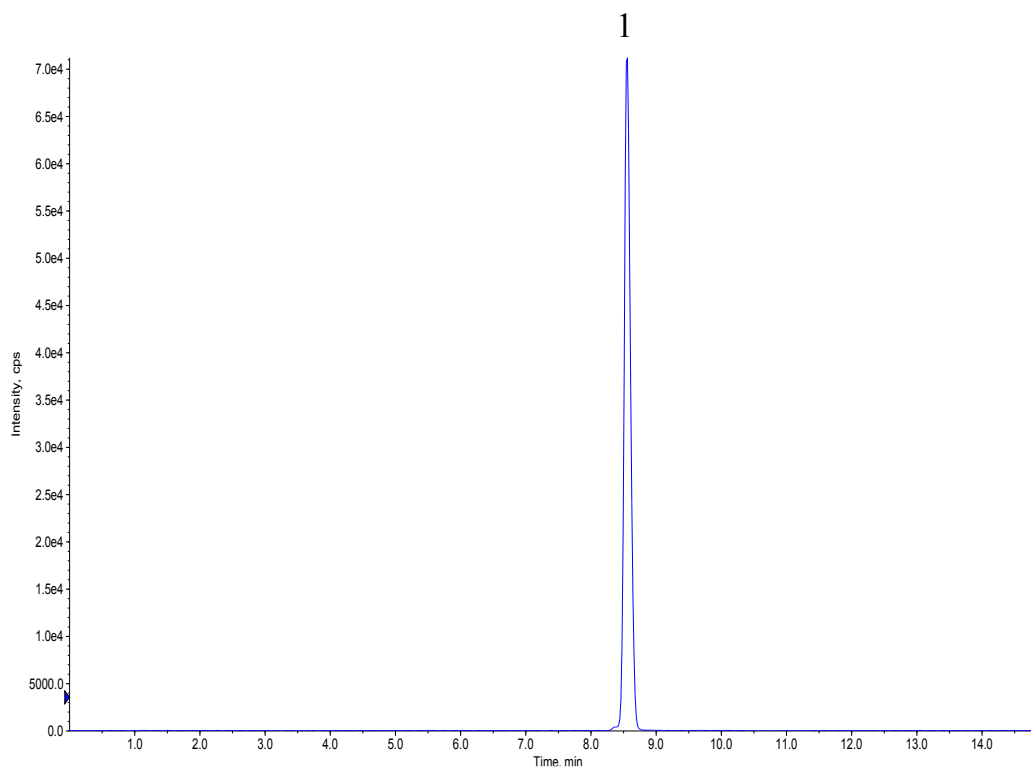


### Analysis of Tetrodotoxin

Data No. LB496-812



#### Conditions

**Column** : InertSustain Amide  
(3 μm, 150 x 2.1 mm I.D.)

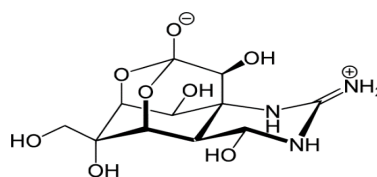
**Column Cat. No.** : 5020-88731

**Eluent** : A) CH<sub>3</sub>CN  
B) 0.1 % HCOOH in H<sub>2</sub>O

Time (min)	A (%)	B (%)
0.00	85	15
8.00	50	50
8.10	85	15
15.1	85	15

#### Analyte:

1. Tetrodotoxin 100 ng/mL



1. Tetrodotoxin

**Flow Rate** : 0.3 mL/min

**Col. Temp.** : 40 °C

**Detection** : LC/MS/MS (4000Q TRAP®, ESI, Positive, SRM)

**Injection Vol.** : 2 μL

**Sample** : Standard