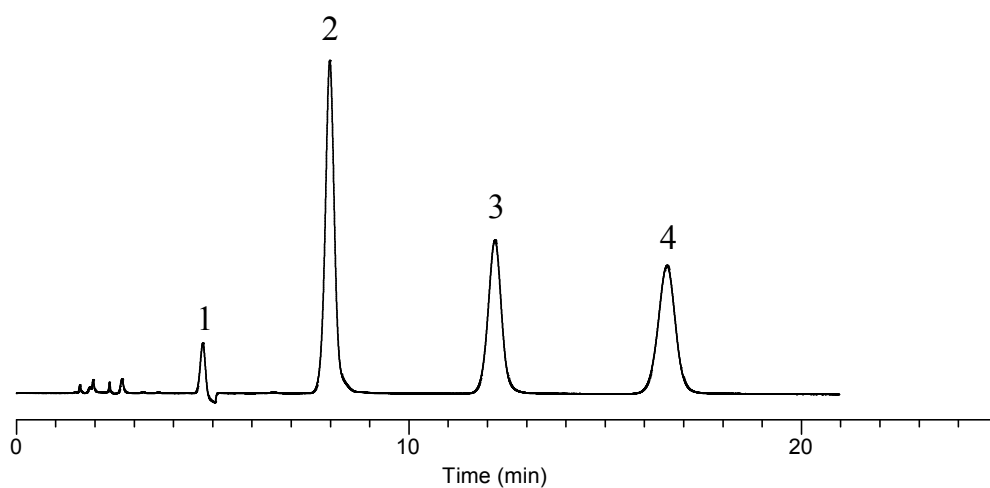


## Analysis of Melamine related compounds

Data No. LB500-806



### Conditions

**Column** : InertSustain Amide  
(5  $\mu$  m, 150 x 2.1 mm I.D.)  
**Column Cat. No.** : 5020-88607  
**Eluent** : A) CH<sub>3</sub>CN  
B) 10 mM HCOONH<sub>4</sub> in H<sub>2</sub>O  
A/B = 90/10, v/v  
**Flow Rate** : 0.2 mL/min  
**Col. Temp.** : 40 °C  
**Detection** : UV 215 nm  
**Injection Vol.** : 0.5  $\mu$  L  
**Sample** : Standard

### Analyte:

1. Cyanuric acid	1 mg/mL
2. Melamine	0.1 mg/mL
3. Ammelide	0.1 mg/mL
4. Ammeline	0.1 mg/mL